

CILINDRO ISO 15552

ISO 15552 CYLINDER



GARCIA MARIN SYSTEM, S.L.
www.gmsystem.net

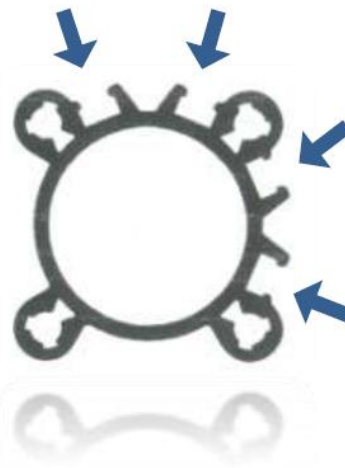
El nuevo perfil LUX ofrece la posibilidad de montar sensor magnético, en dos de los cuatro costados del cilindro.

Los cilindros se entregarán con las regatas posicionadas en la parte superior del cilindro y en costado derecho. (Podrán indicar si prefieren otra posición en el momento del pedido).

*The LUX profile gets you the chance to assemble the magnetic switch. 4 grooves in 2 sides.
The standard groove position is in upper and right sides. (Different position on demand)*

NOVEDAD
NEW

Perfil con 4 regatas
para sensor magnético



**Doble efecto magnético
Double Acting Magnetic**

**Tipo (mirar leyenda)
Type (see legend)**

COD: MGT 032 M
MGW 032
MGX 032

**Carrera
Stroke**

	Tipo - Type		Piston	Eje - Rod	
	D.E	D.V	Magnetic	Acero cromado Chrome plated steel	Acero inox Stainless steel
std M	✦		✦	✦	
E	✦		✦		✦
G		✦	✦	✦	
P		✦	✦		✦

C = Carrera estándar Standard stroke [mm]

25 50 75 80 100 125 150 160 200 250 300 320 400 500

Carrera ejemplo – example:
Stroke 50mm= 0050

Ejemplo – example: **MGT 032 M 0050 / MGW 032 M 0050 / MGX 032 M 0050**

Kit de juntas

Spare part seals kit

COD: MGX 6431 – 032K

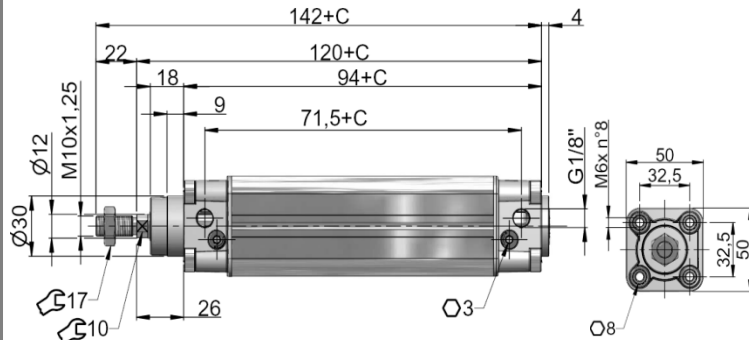
MGT

PERFIL LUX (4 REGATAS PARA SENSOR MAGNETICO)
LUX PROFILE (4 GUIDES FOR MAGNETIC SWITCH)



DISPONIBLE:
AVAILABLE:

MGW: PERFIL MICKEY MOUSE / MICKEY MOUSE PROFILE
MGX: PERFIL CUADRADO / SQUARE PROFILE



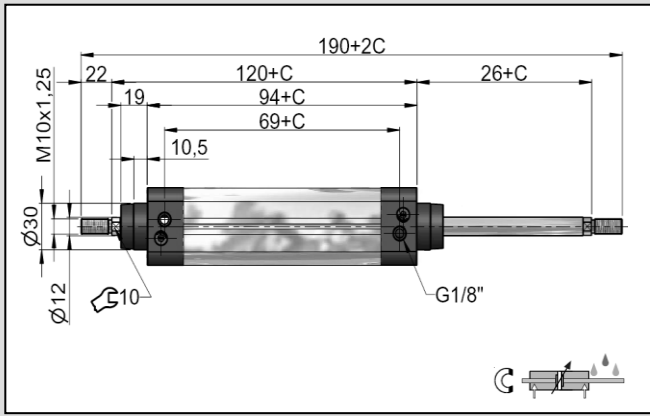
Indicaciones: carrera=0 Drawing refers to stroke C=0

Leyenda - Legend

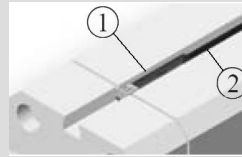
M		Doble Efecto Magnético Amortiguado con eje cromado Double Acting Magnetic with Cushions and chrome plated steel Rod
E		Doble Efecto Magnético Amortiguado con eje inox Double Acting Magnetic with Cushions and stainless steel Rod
G		Doble Vástago Pasante Magnético Amortiguado con eje cromado Double Rod Magnetic with Cushions and chrome plated steel Rod
P		Doble Vástago Pasante Magnético Amortiguado con eje inox Double Rod Magnetic with Cushions and stainless steel Rod

Fluido	Fluid	Aire filtrado, lubricado o sin lubricar Filtered lubricated or not lubricated air
Fijaciones	Mountings	ISO 15552 (ISO6431) VDMA 24562
Conexión	Connections	G 1/8"
Presión de trabajo	Working pressure	= 1+ 10 bar = 1,5 ÷ 10 bar
Temperatura ambiente	Working temperature range	-10 ÷ 60°C
Material Vástago	Rod material	Acero Cromado e inox Chrome plated and stainless steel
Material Testeras	End caps material	Aluminio Aluminium
Material Perfil	Tube material	Aluminio anodizado Anodized aluminium
Material Juntas	Seals material	Poliuretano Polyurethane
Fuerza de trabajo (6bar)	Thrust and traction force (6bar)	= 48,25 kg = 41,46 kg
Consumo x 10mm carrera (6bar)	Consumption x 10mm stroke (6bar)	q _s = 56 x 10 ⁻³ NI/min q _t = 48 x 10 ⁻³ NI/min
Lubricante recomendado	Recommended oil	Airmix system Kluber airpres 32 ISO VG 32 32mm ² /s 40°C ISO 3448
Vida útil (en condiciones de trabajo adecuadas)	Life (if properly used)	5000 km
Peso [gr] (C=0 peso 1mm CxC)	Weight [gr] (C=0 weight 1mm CxC)	= 387 + 3,8 x C

Versión doble vástago Double rod type

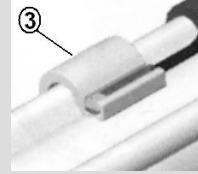


Sensor magnético Magnetic sensor



1 Sensor magnético
Magnetic sensor

Reed CNKT50RQD
NPN CNKT50NQD
PNP CNKT50PQD



2 Cable con conector
Cable with plug

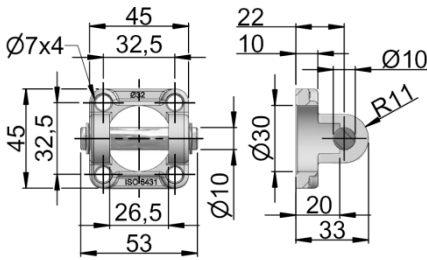
2m CNM83RPVC2M
5m CNM83RPVC5M

3 Brida
Bracket

BMPF01

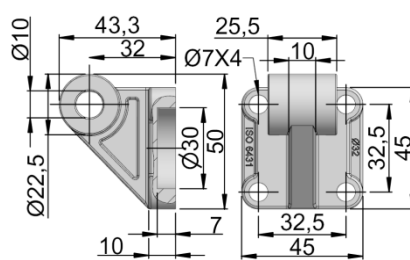
Para más artículos contactar con dpto. comercial Ask for more items to our Sales Department

Fijaciones y Accesorios Fixing and Accessories ISO 15552 (ISO 6431)



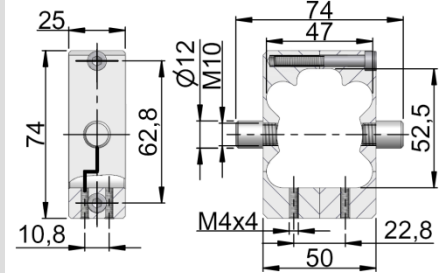
Charnela hembra con perno
Swivel flange with pin

KD001500



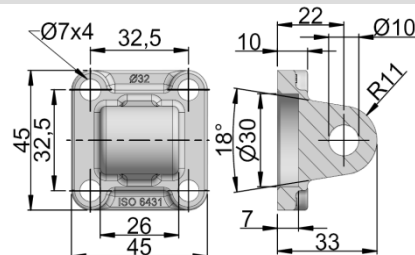
Soporte lateral 90°
Clevis foot for swivel flange

KD001550



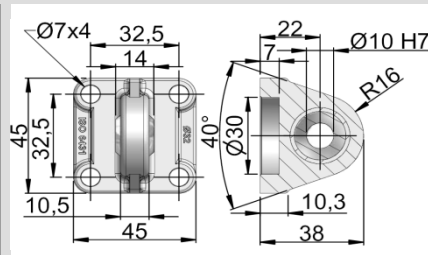
Charnela intermedia regulable
Trunnion clevis

KD001540



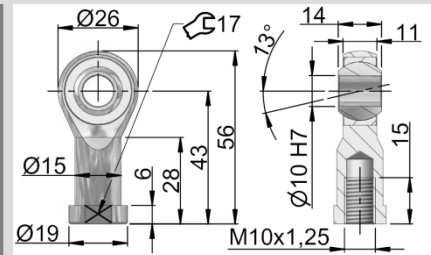
Charnela macho
Swivel flange

KD001520



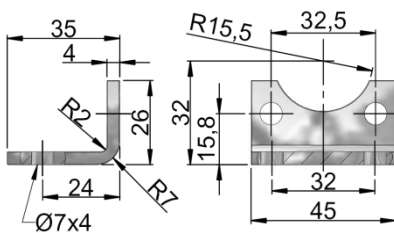
Charnela macho con rótula
Swivel flange with spherical bearing

KD000030



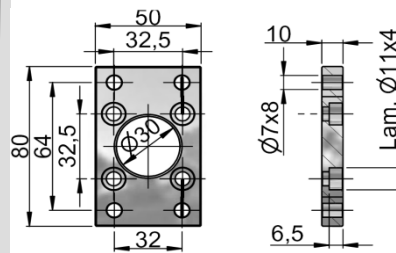
Rótula
Rod eye

KD000005



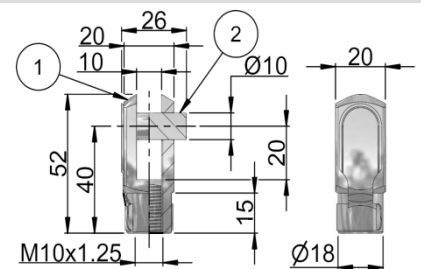
Pata fijación
Angle foot

KD001580



Placa fijación
Flange

KD001560



1 Horquilla 2 Clip 1 Rod clevis 2 Clips

1 **KD001433**

2 **KD001363**

1+2 **FOR10**

**Doble efecto magnético
Double Acting Magnetic**

**Tipo (mirar leyenda)
Type (see legend)**

COD: MGT 040 M
MGW 040
MGX 040

**Carrera
Stroke**

	Tipo - Type		Piston	Eje - Rod	
	D.E	D.V	Magnetic	Acero cromado Chrome plated steel	Acero inox Stainless steel
std M	✦		✦	✦	
E	✦		✦		✦
G		✦	✦	✦	
P		✦	✦		✦

C = Carrera estándar Standard stroke [mm]

25 50 75 80 100 125 150 160 200 250 300 320 400 500

Carrera ejemplo – example:
Stroke 50mm= 0050

Ejemplo – example: **MGT 040 M 0050 / MGW 040 M 0050 / MGX 040 M 0050**

Kit de juntas

Spare part seals kit

COD: MGX 6431 – 040K

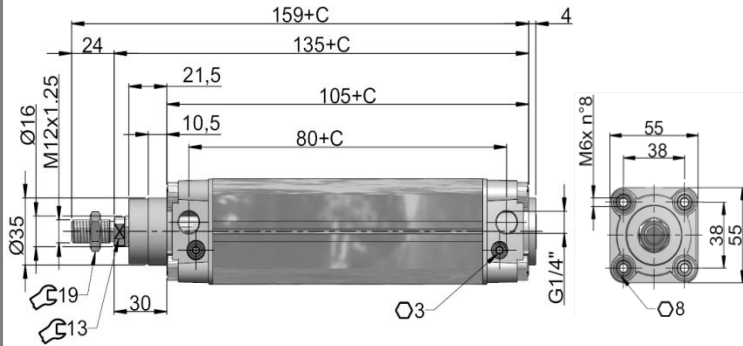
MGT

PERFIL LUX (4 REGATAS PARA SENSOR MAGNETICO)
LUX PROFILE (4 GUIDES FOR MAGNETIC SWITCH)



DISPONIBLE:
AVAILABLE:

MGW: PERFIL MICKEY MOUSE / MICKEY MOUSE PROFILE
MGX: PERFIL CUADRADO / SQUARE PROFILE



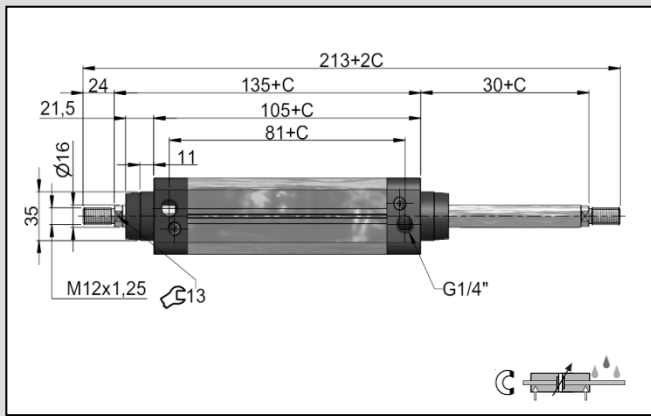
Indicaciones: carrera=0 Drawing refers to stroke C=0

Leyenda - Legend

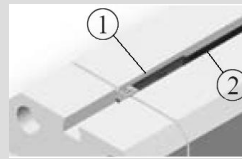
- M** Doble Efecto Magnético Amortiguado con eje cromado
Double Acting Magnetic with Cushions and chrome plated steel Rod
- E** Doble Efecto Magnético Amortiguado con eje inox
Double Acting Magnetic with Cushions and stainless steel Rod
- G** Doble Vástago Pasante Magnético Amortiguado con eje cromado
Double Rod Magnetic with Cushions and chrome plated steel Rod
- P** Doble Vástago Pasante Magnético Amortiguado con eje inox
Double Rod Magnetic with Cushions and stainless steel Rod

Fluido	Fluid	Aire filtrado, lubricado o sin lubricar Filtered lubricated or not lubricated air
Fijaciones	Mountings	ISO 15552 (ISO6431) VDMA 24562
Conexión	Connections	G 1/4"
Presión de trabajo	Working pressure	= 1 ÷ 10 bar = 1,5 ÷ 10 bar
Temperatura ambiente	Working temperature range	-10 ÷ 60°C
Material Vástago	Rod material	Acero Cromado e inox Chrome plated and stainless steel
Material Testeras	End caps material	Aluminio Aluminium
Material Perfil	Tube material	Aluminio anodizado Anodized aluminium
Material Juntas	Seals material	Poliuretano Polyurethane
Fuerza de trabajo (6bar)	Thrust and traction force (6bar)	= 75 kg = 63,3 kg
Consumo x 10mm carrera (6bar)	Consumption x 10mm stroke (6bar)	q _s = 87 x 10 ⁻³ NI/min q _t = 74 x 10 ⁻³ NI/min
Lubricante recomendado	Recommended oil	Airmix system Kluber airpres 32 ISO VG 32 32mm ² /s 40°C ISO 3448
Vida útil (en condiciones de trabajo adecuadas)	Life (if properly used)	5000 km
Peso [gr] (C=0 peso 1mm CxC)	Weight [gr] (C=0 weight 1mm CxC)	= 582 + 4,75 x C

Versión doble vástago Double rod type

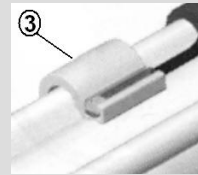


Sensor magnético Magnetic sensor



1 Sensor magnético
Magnetic sensor

Reed CNKT50RQD
NPN CNKT50NQD
PNP CNKT50PQD



2 Cable con conector
Cable with plug

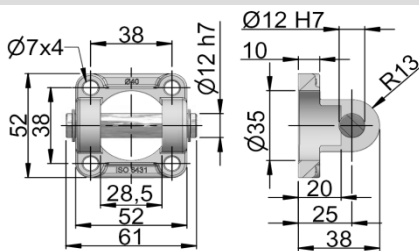
2m CNM83RPVC2M
5m CNM83RPVC5M

3 Brida
Bracket

BMPF01

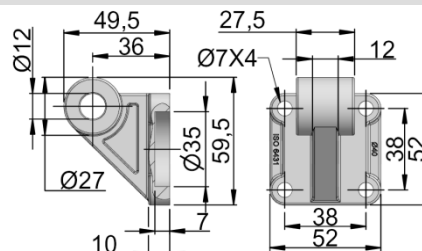
Para más artículos contactar con dpto. comercial Ask for more items to our Sales Department

Fijaciones y Accesorios Fixing and Accessories ISO 15552 (ISO 6431)



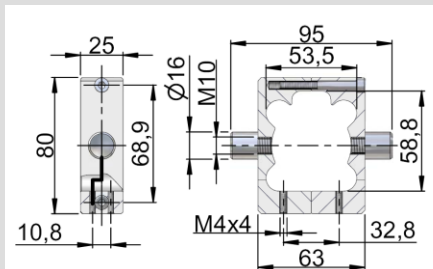
Charnela hembra con perno
Swivel flange with pin

KD001501



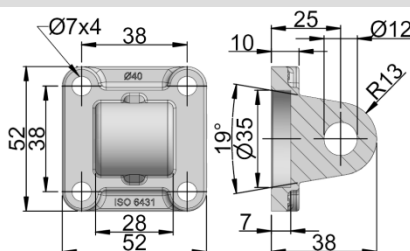
Soporte lateral 90°
Clevis foot for swivel flange

KD001551



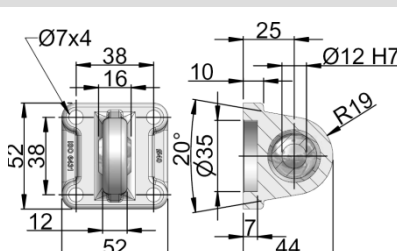
Charnela intermedia regulable
Trunnion clevis

KD001541



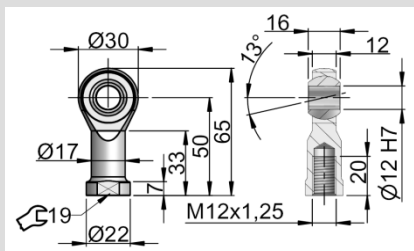
Charnela macho
Swivel flange

KD001521



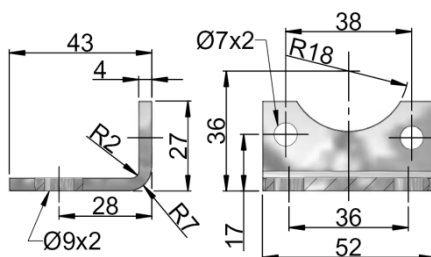
Charnela macho con rótula
Swivel flange with spherical bearing

KD000031



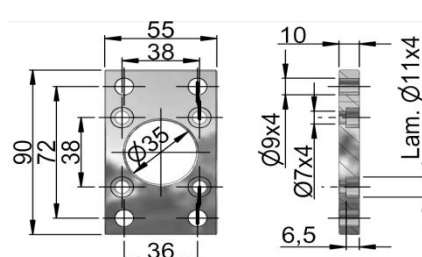
Rótula
Rod eye

KD000006



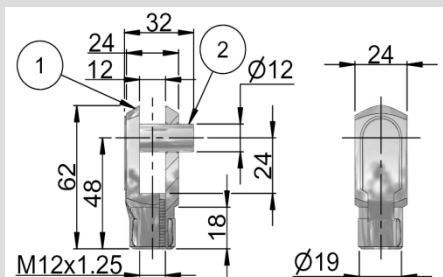
Pata fijación
Angle foot

KD001581



Placa fijación
Flange

KD001561



1 Horquilla 2 Clip 1 Rod clevis 2 Clips

1 KD001434

2 KD001364

1+2 FOR12

**Doble efecto magnético
Double Acting Magnetic**

**Tipo (mirar leyenda)
Type (see legend)**

COD: MGT 050 M
MGW 050
MGX 050

**Carrera
Stroke**

	Tipo - Type		Piston	Eje - Rod	
	D.E	D.V	Magnetic	Acero cromado Chrome plated steel	Acero inox Stainless steel
std M	✦		✦	✦	
E	✦		✦		✦
G		✦	✦	✦	
P		✦	✦		✦

C = Carrera estándar Standard stroke [mm]

25 50 75 80 100 125 150 160 200 250 300 320 400 500

**Carrera ejemplo – example:
Stroke 50mm= 0050**

Ejemplo – example: **MGT 050 M 0050 / MGW 050 M 0050 / MGX 050 M 0050**

Kit de juntas

Spare part seals kit

COD: MGX 6431 – 050K

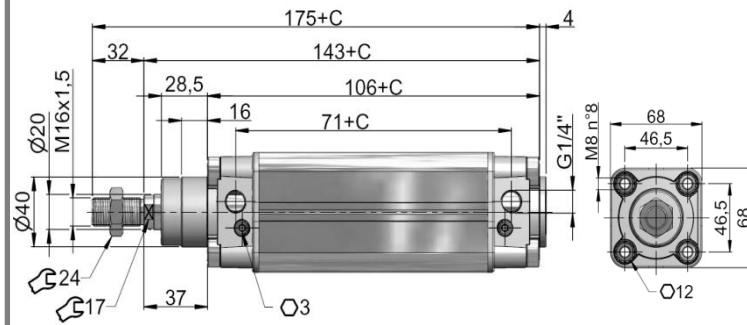
MGT

PERFIL LUX (4 REGATAS PARA SENSOR MAGNETICO)
LUX PROFILE (4 GUIDES FOR MAGNETIC SWITCH)



DISPONIBLE:
AVAILABLE:

MGW: PERFIL MICKEY MOUSE / MICKEY MOUSE PROFILE
MGX: PERFIL CUADRADO / SQUARE PROFILE



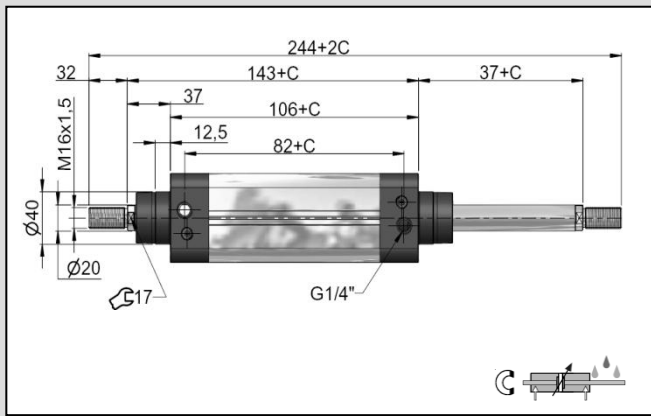
Indicaciones: carrera=0 Drawing refers to stroke C=0

Leyenda - Legend

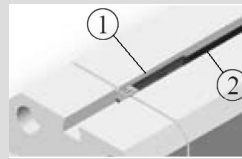
- M** Doble Efecto Magnético Amortiguado con eje cromado
Double Acting Magnetic with Cushions and chrome plated steel Rod
- E** Doble Efecto Magnético Amortiguado con eje inox
Double Acting Magnetic with Cushions and stainless steel Rod
- G** Doble Vástago Pasante Magnético Amortiguado con eje cromado
Double Rod Magnetic with Cushions and chrome plated steel Rod
- P** Doble Vástago Pasante Magnético Amortiguado con eje inox
Double Rod Magnetic with Cushions and stainless steel Rod

Fluido	Fluid	Aire filtrado, lubricado o sin lubricar <i>Filtred lubricated or not lubricated air</i>
Fijaciones	Mountings	ISO 15552 (ISO6431) VDMA 24562
Conexión	Connections	G 1/4"
Presión de trabajo	Working pressure	= 1 ÷ 10 bar = 1,5 ÷ 10 bar
Temperatura ambiente	Working temperature range	-10 ÷ 60°C
Material Vástago	Rod material	Acero Cromado e inox <i>Chrome plated and stainless steel</i>
Material Testeras	End caps material	Aluminio <i>Aluminium</i>
Material Perfil	Tube material	Aluminio anodizado <i>Anodized aluminium</i>
Material Juntas	Seals material	Poliuretano <i>Polyurethane</i>
Fuerza de trabajo (6bar)	Thrust and traction force (6bar)	= 117 kg = 99 kg
Consumo x 10mm carrera (6bar)	Consumption x 10mm stroke (6bar)	q _s = 137 x 10 ⁻³ NI/min q _t = 115 x 10 ⁻³ NI/min
Lubricante recomendado	Recommended oil	Airmix system Kluber airpres 32 ISO VG 32 32mm ² /s 40°C ISO 3448
Vida útil (en condiciones de trabajo adecuadas)	Life (if properly used)	5000 km
Peso [gr] (C=0 peso 1mm CxC)	Weight [gr] (C=0 weight 1mm CxC)	= 906 + 6,1x C

Versión doble vástago Double rod type

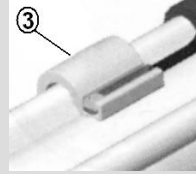


Sensor magnético Magnetic sensor



1 Sensor magnético
Magnetic sensor

Reed CNKT50RQD
NPN CNKT50NQD
PNP CNKT50PQD



2 Cable con conector
Cable with plug

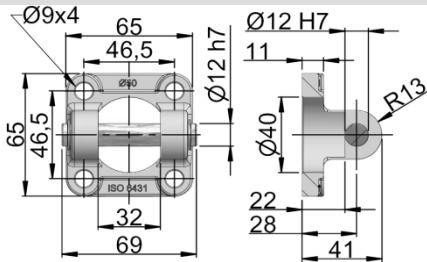
2m CNM83RPVC2M
5m CNM83RPVC5M

3 Brida
Bracket

BMPF02

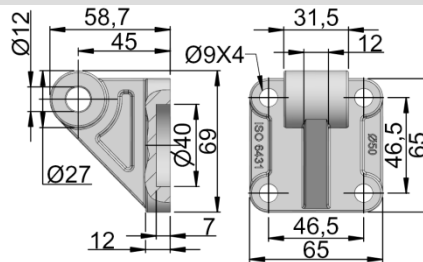
Para más artículos contactar con dpto. comercial Ask for more items to our Sales Department

Fijaciones y Accesorios Fixing and Accessories ISO 15552 (ISO 6431)



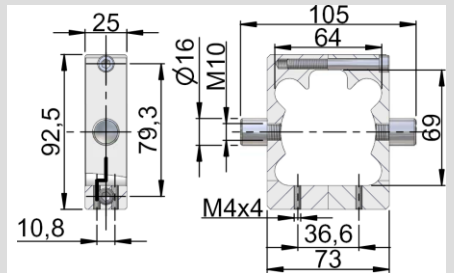
Charnela hembra con perno
Swivel flange with pin

KD001502



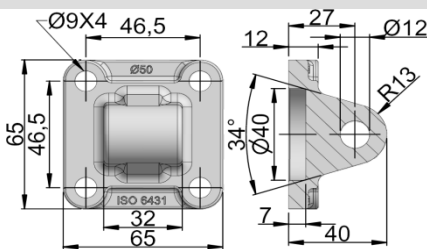
Soporte lateral 90°
Clevis foot for swivel flange

KD001552



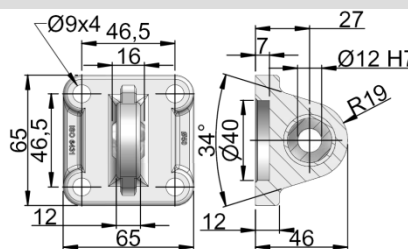
Charnela intermedia regulable
Trunnion clevis

KD001542



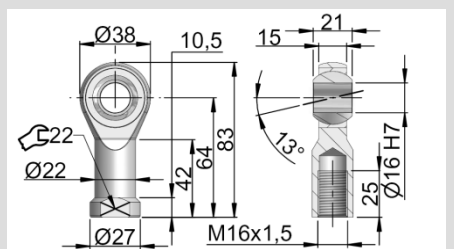
Charnela macho
Swivel flange

KD001522



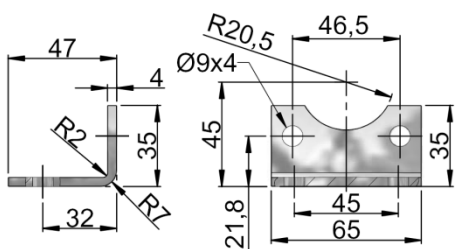
Charnela macho con rótula
Swivel flange with spherical bearing

KD000032



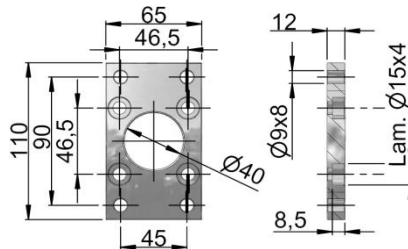
Rótula
Rod eye

KD000007



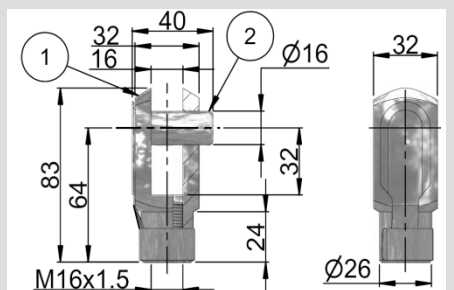
Pata fijación
Angle foot

KD001582



Placa fijación
Flange

KD001562



1 Horquilla 2 Clip 1 Rod clevis 2 Clips

1 KD001435

2 KD001365

1+2 FOR16

**Doble efecto magnético
Double Acting Magnetic**

**Tipo (mirar leyenda)
Type (see legend)**

COD: MGT 063

M

MGW 063

MGX 063

**Carrera
Stroke**

	Tipo - Type		Piston	Eje - Rod	
	D.E	D.V	Magnetic	Acero cromado Chrome plated steel	Acero inox Stainless steel
std M	✦		✦	✦	
E	✦		✦		✦
G		✦	✦	✦	
P		✦	✦		✦

C = Carrera estándar Standard stroke [mm]

25 50 75 80 100 125 150 160 200 250 300 320 400 500

Carrera ejemplo – example:
Stroke 50mm= 0050

Ejemplo – example: **MGT 063 M 0050 / MGW 063 M 0050 / MGX 063 M 0050**

Kit de juntas

Spare part seals kit

COD: MGX 6431 – 063K

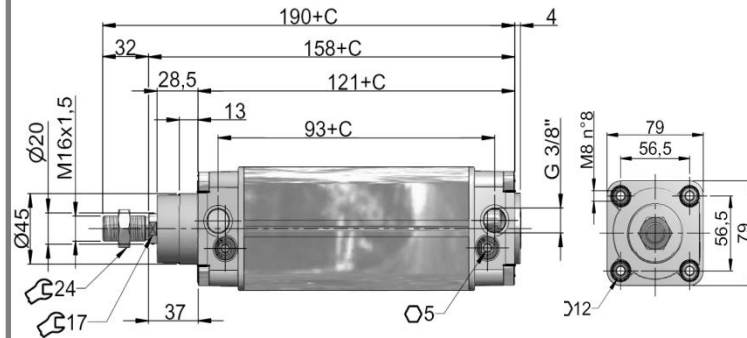
MGT

PERFIL LUX (4 REGATAS PARA SENSOR MAGNETICO)
LUX PROFILE (4 GUIDES FOR MAGNETIC SWITCH)



DISPONIBLE:
AVAILABLE:

MGW: PERFIL MICKEY MOUSE / MICKEY MOUSE PROFILE
MGX: PERFIL CUADRADO / SQUARE PROFILE



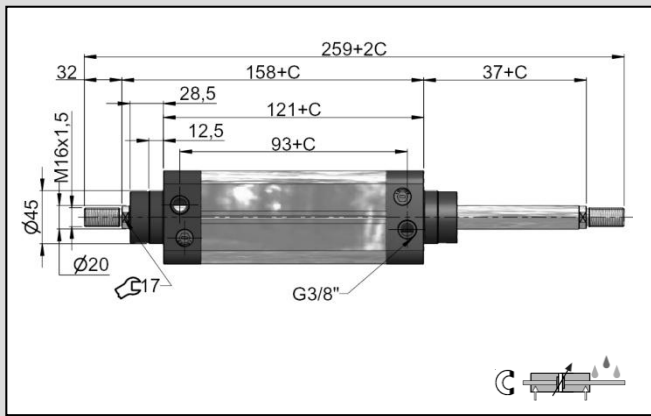
Indicaciones: carrera=0 Drawing refers to stroke C=0

Leyenda - Legend

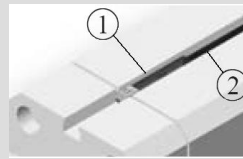
- M** Doble Efecto Magnético Amortiguado con eje cromado
Double Acting Magnetic with Cushions and chrome plated steel Rod
- E** Doble Efecto Magnético Amortiguado con eje inox
Double Acting Magnetic with Cushions and stainless steel Rod
- G** Doble Vástago Pasante Magnético Amortiguado con eje cromado
Double Rod Magnetic with Cushions and chrome plated steel Rod
- P** Doble Vástago Pasante Magnético Amortiguado con eje inox
Double Rod Magnetic with Cushions and stainless steel Rod

Fluido	Fluid	Aire filtrado, lubricado o sin lubricar <i>Filtred lubricated or not lubricated air</i>
Fijaciones	Mountings	ISO 15552 (ISO6431) VDMA 24562
Conexión	Connections	G 3/8"
Presión de trabajo	Working pressure	= 1 ÷ 10 bar = 1,5 ÷ 10 bar
Temperatura ambiente	Working temperature range	-10 ÷ 60°C
Material Vástago	Rod material	Acero Cromado e inox <i>Chrome plated and stainless steel</i>
Material Testeras	End caps material	Aluminio <i>Aluminium</i>
Material Perfil	Tube material	Aluminio anodizado <i>Anodized aluminium</i>
Material Juntas	Seals material	Poliuretano <i>Polyurethane</i>
Fuerza de trabajo (6bar)	Thrust and traction force (6bar)	= 187 kg = 168 kg
Consumo x 10mm carrera (6bar)	Consumption x 10mm stroke (6bar)	q _s = 218 x 10 ⁻³ NI/min q _t = 196 x 10 ⁻³ NI/min
Lubricante recomendado	Recommended oil	Airmix system Kluber airpres 32 ISO VG 32 32mm ² /s 40°C ISO 3448
Vida útil (en condiciones de trabajo adecuadas)	Life (if properly used)	5000 km
Peso [gr] (C=0 peso 1mm CxC)	Weight [gr] (C=0 weight 1mm CxC)	= 1247 + 7xC

Versión doble vástago Double rod type

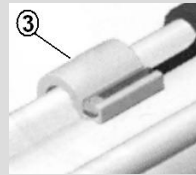


Sensor magnético Magnetic sensor



1 Sensor magnético
Magnetic sensor

Reed CNKT50RQD
NPN CNKT50NQD
PNP CNKT50PQD



2 Cable con conector
Cable with plug

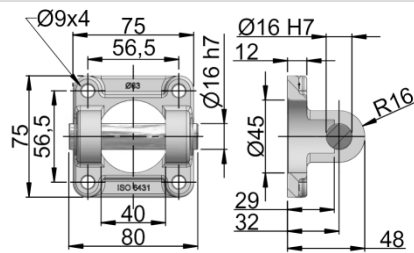
2m CNM83RPVC2M
5m CNM83RPVC5M

3 Brida
Bracket

BMPF02

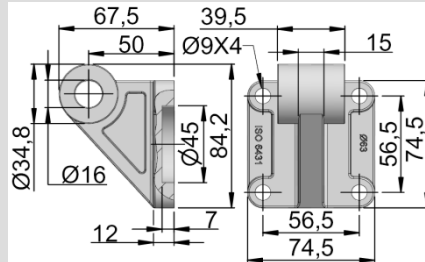
Para más artículos contactar con dpto. comercial Ask for more items to our Sales Department

Fijaciones y Accesorios Fixing and Accessories ISO 15552 (ISO 6431)



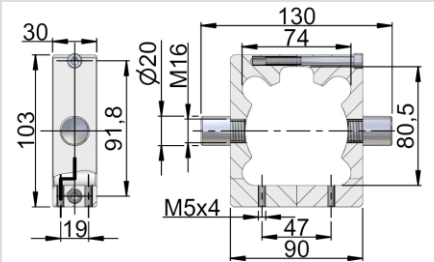
Charnela hembra con perno
Swivel flange with pin

KD001503



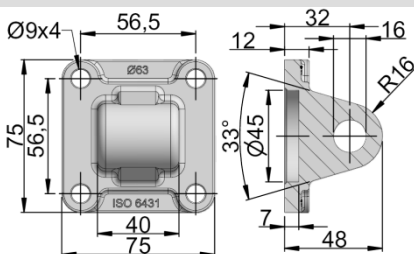
Soporte lateral 90°
Clevis foot for swivel flange

KD001553



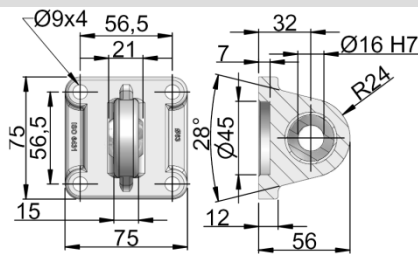
Charnela intermedia regulable
Trunnion clevis

KD001543



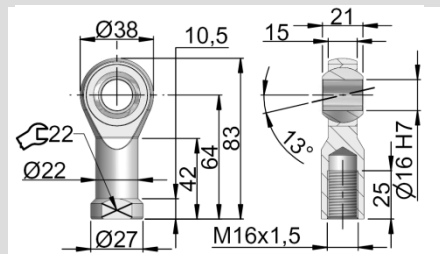
Charnela macho
Swivel flange

KD001523



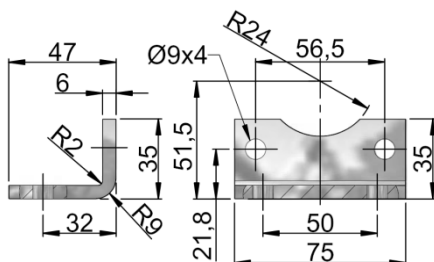
Charnela macho con rótula
Swivel flange with spherical bearing

KD000033



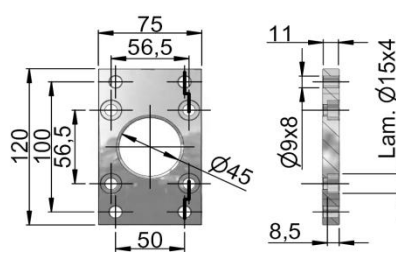
Rótula
Rod eye

KD000007



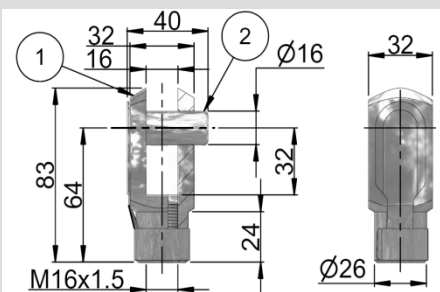
Pata fijación
Angle foot

KD001583



Placa fijación
Flange

KD001563



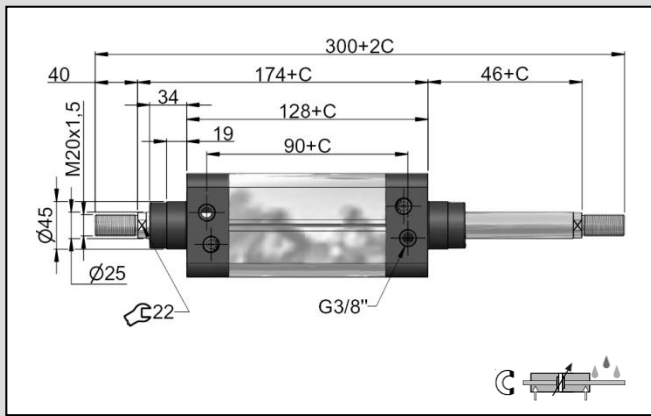
1 Horquilla 2 Clip 1 Rod clevis 2 Clips

1 KD001435

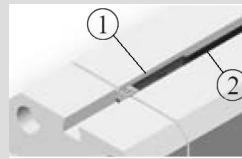
2 KD001365

1+2 FOR16

Versión doble vástago Double rod type



Sensor magnético Magnetic sensor



1 Sensor magnético
Magnetic sensor

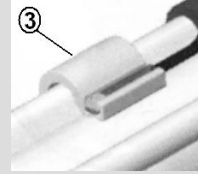
Reed CNKT50RQD
NPN CNKT50NQD
PNP CNKT50PQD

2 Cable con conector
Cable with plug

2m CNM83RPVC2M
5m CNM83RPVC5M

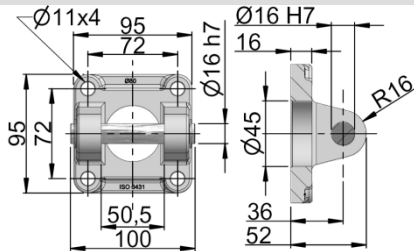
3 Brida
Bracket

BMPF03



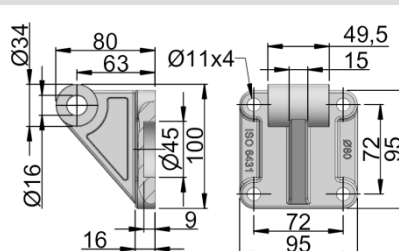
Para más artículos contactar con dpto. comercial Ask for more items to our Sales Department

Fijaciones y Accesorios Fixing and Accessories ISO 15552 (ISO 6431)



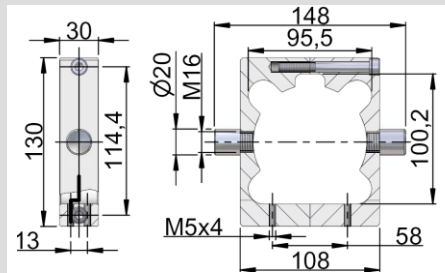
Charnela hembra con perno
Swivel flange with pin

KD001504



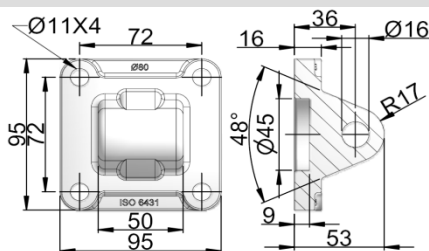
Soporte lateral 90°
Clevis foot for swivel flange

KD001554



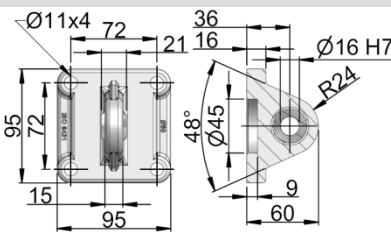
Charnela intermedia regulable
Trunnion clevis

KD001544



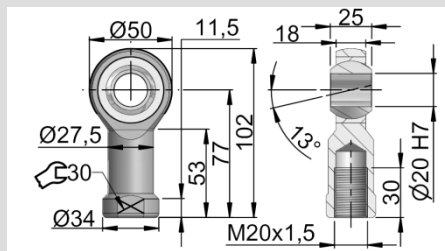
Charnela macho
Swivel flange

KD001524



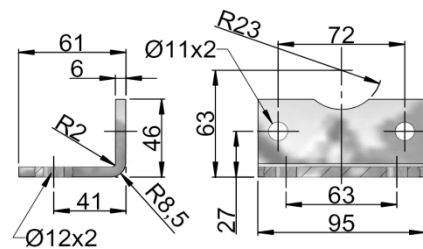
Charnela macho con rótula
Swivel flange with spherical bearing

KD000034



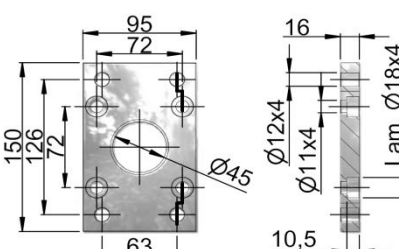
Rótula
Rod eye

KD000008



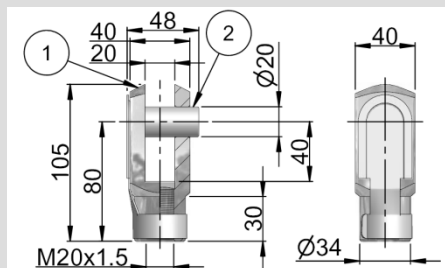
Pata fijación
Angle foot

KD001584



Placa fijación
Flange

KD001564



1 Horquilla 2 Clip 1 Rod clevis 2 Clips

1 KD001436

2 KD001366

1+2 FOR20

**Doble efecto magnético
Double Acting Magnetic**

**Tipo (mirar leyenda)
Type (see legend)**

COD: MGT 100 M

MGW 100
MGX 100

**Carrera
Stroke**

	Tipo - Type		Piston	Eje - Rod	
	D.E	D.V	Magnetic	Acero cromado Chrome plated steel	Acero inox Stainless steel
std M	✦		✦	✦	
E	✦		✦		✦
G		✦	✦	✦	
P		✦	✦		✦

C = Carrera estándar Standard stroke [mm]

25 50 75 80 100 125 150 160 200 250 300 320 400 500

Carrera ejemplo – example:
Stroke 50mm= 0050

Ejemplo – example: **MGT 100 M 0050 / MGW 100 M 0050 / MGX 100 M 0050**

Kit de juntas

Spare part seals kit

COD: MGX 6431 – 100K

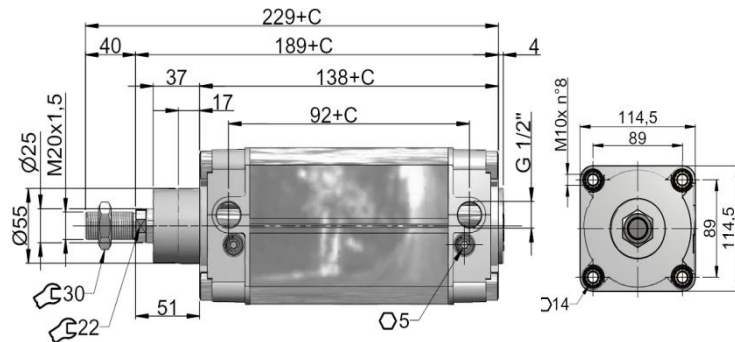
MGT

PERFIL LUX (4 REGATAS PARA SENSOR MAGNETICO)
LUX PROFILE (4 GUIDES FOR MAGNETIC SWITCH)



DISPONIBLE:
AVAILABLE:

MGW: PERFIL MICKEY MOUSE / MICKEY MOUSE PROFILE
MGX: PERFIL CUADRADO / SQUARE PROFILE



Indicaciones: carrera=0 Drawing refers to stroke C=0

Leyenda - Legend

M		Doble Efecto Magnético Amortiguado con eje cromado Double Acting Magnetic with Cushions and chrome plated steel Rod
E		Doble Efecto Magnético Amortiguado con eje inox Double Acting Magnetic with Cushions and stainless steel Rod
G		Doble Vástago Pasante Magnético Amortiguado con eje cromado Double Rod Magnetic with Cushions and chrome plated steel Rod
P		Doble Vástago Pasante Magnético Amortiguado con eje inox Double Rod Magnetic with Cushions and stainless steel Rod

Fluido	Fluid	Aire filtrado, lubricado o sin lubricar Filtered lubricated or not lubricated air
Fijaciones	Mountings	ISO 15552 (ISO6431) VDMA 24562
Conexión	Connections	G 1/2"
Presión de trabajo	Working pressure	= 1 ÷ 10 bar = 1,5 ÷ 10 bar
Temperatura ambiente	Working temperature range	-10 ÷ 60°C
Material Vástago	Rod material	Acero Cromado e inox Chrome plated and stainless steel
Material Testeras	End caps material	Aluminio Aluminium
Material Perfil	Tube material	Aluminio anodizado Anodized aluminium
Material Juntas	Seals material	Poliuretano Polyurethane
Fuerza de trabajo (6bar)	Thrust and traction force (6bar)	= 471 kg = 442 kg
Consumo x 10mm carrera (6bar)	Consumption x 10mm stroke (6bar)	q _s = 549 x 10 ⁻³ NI/min q _t = 515 x 10 ⁻³ NI/min
Lubricante recomendado	Recommended oil	Airmix system Kluber airpres 32 ISO VG 32 32mm ² /s 40°C ISO 3448
Vida útil (en condiciones de trabajo adecuadas)	Life (if properly used)	5000 km
Peso [gr] (C=0 peso 1mm CxC)	Weight [gr] (C=0 weight 1mm CxC)	= 2934 + 14xC

Doble efecto magnético

Double Acting Magnetic

Tipo (mirar leyenda)

Type (see legend)

COD: MGW 125 M

Carrera
Stroke

	Tipo - Type		Piston	Eje - Rod	
	D.E	D.V	Magnetic	Acero cromado Chrome plated steel	Acero inox Stainless steel
std M	✦				
E	✦				✦
G		✦		✦	
P		✦			✦

C = Carrera estándar Standard stroke [mm]

25 50 75 80 100 125 150 160 200 250 300 320 400 500

Carrera ejemplo – example:
Stroke 50mm= 0050

Ejemplo – example: **MGW 125 M 0050**

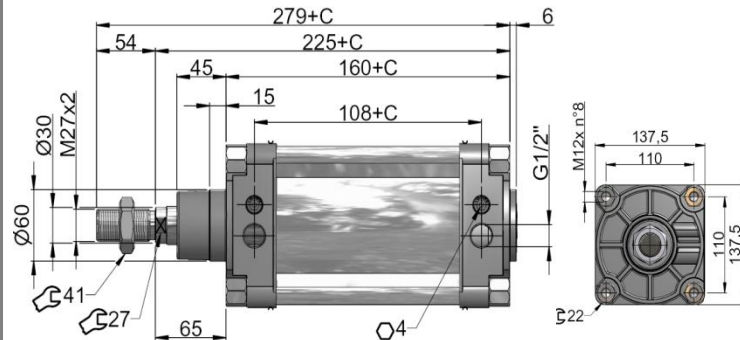
Kit de juntas

Spare part seals kit

COD: MGW 6431 – 125K

MGW

PERFIL MICKEY MOUSE
MICKEY MOUSE PROFILE



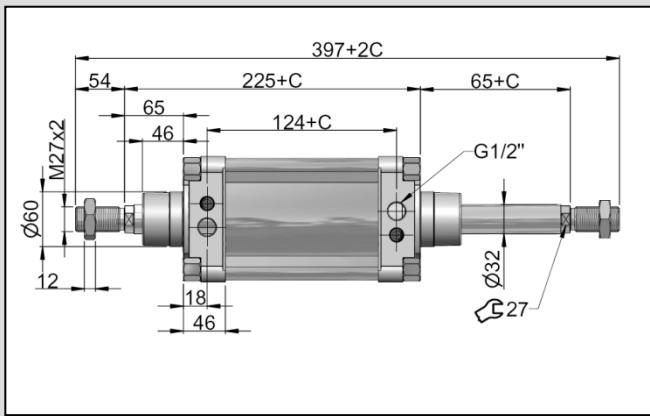
Indicaciones: carrera=0 Drawing refers to stroke C=0

Leyenda - Legend

- M** Doble Efecto Magnético Amortiguado con eje cromado
Double Acting Magnetic with Cushions and chrome plated steel Rod
- E** Doble Efecto Magnético Amortiguado con eje inox
Double Acting Magnetic with Cushions and stainless steel Rod
- G** Doble Vástago Pasante Magnético Amortiguado con eje cromado
Double Rod Magnetic with Cushions and chrome plated steel Rod
- P** Doble Vástago Pasante Magnético Amortiguado con eje inox
Double Rod Magnetic with Cushions and stainless steel Rod

Fluido	Fluid	Aire filtrado, lubricado o sin lubricar Filtered lubricated or not lubricated air
Fijaciones	Mountings	ISO 15552 (ISO6431) VDMA 24562
Conexión	Connections	G 1/2"
Presión de trabajo	Working pressure	= 1 ÷ 10 bar = 1,5 ÷ 10 bar
Temperatura ambiente	Working temperature range	-10 ÷ 60°C
Material Vástago	Rod material	Acero Cromado e inox Chrome plated and stainless steel
Material Testeras	End caps material	Aluminio Aluminium
Material Perfil	Tube material	Aluminio anodizado Anodized aluminium
Material Juntas	Seals material	Poliuretano Polyurethane
Fuerza de trabajo (6bar)	Thrust and traction force (6bar)	= 735 kg = 692 kg
Consumo x 10mm carrera (6bar)	Consumption x 10mm stroke (6bar)	q _s = 859 x 10 ⁻³ NI/min q _t = 809 x 10 ⁻³ NI/min
Lubricante recomendado	Recommended oil	Airmix system Kluber airpres 32 ISO VG 32 32mm ² /s 40°C ISO 3448
Vida útil (en condiciones de trabajo adecuadas)	Life (if properly used)	5000 km
Peso [gr] (C=0 peso 1mm CxC)	Weight [gr] (C=0 weight 1mm CxC)	= 5935 + 8xC = 6900 + 8xC

Versión doble vástago Double rod type



Sensor magnético Magnetic sensor

1 Sensor magnético
Magnetic sensor

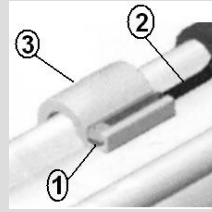
Reed CNKT50RQD
NPN CNKT50NQD
PNP CNKT50PQD

2 Cable con conector
Cable with plug

2m CNM83RPVC2M
5m CNM83RPVC5M

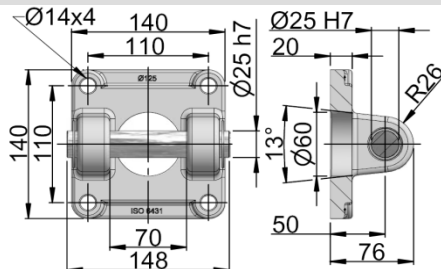
3 Brida
Bracket

BMPF05



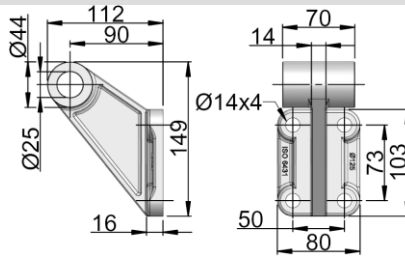
Para más artículos contactar con dpto. comercial Ask for more items to our Sales Department

Fijaciones y Accesorios Fixing and Accessories ISO 1552 (ISO 6431)



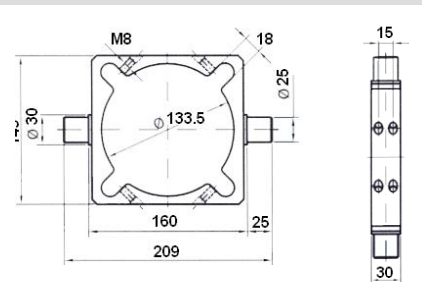
Charnela hembra con perno
Swivel flange with pin

KD001506



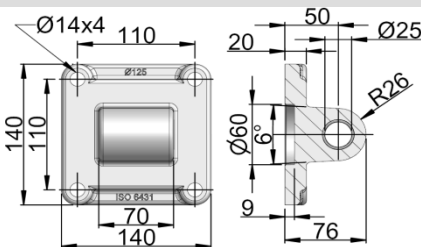
Soporte lateral 90°
Clevis foot for swivel flange

KD001556



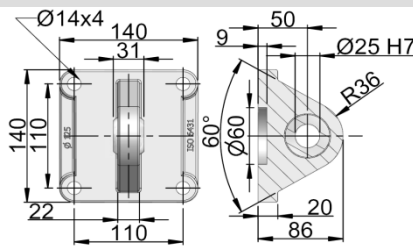
Charnela intermedia regulable
Trunnion clevis

KD001546



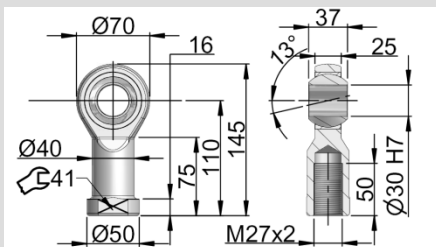
Charnela macho
Swivel flange

KD001526



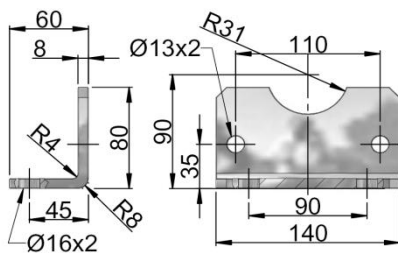
Charnela macho con rótula
Swivel flange with spherical bearing

KD000036



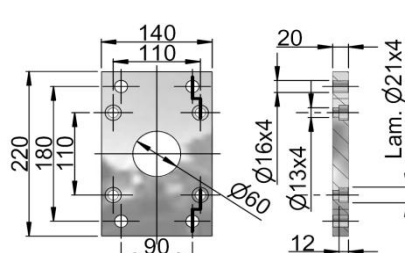
Rótula
Rod eye

KD000009



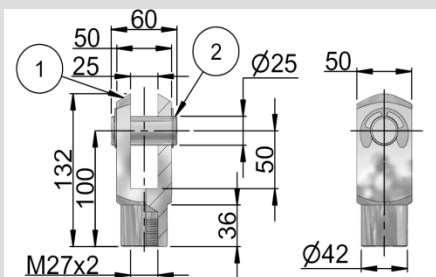
Pata fijación
Angle foot

KD001586



Placa fijación
Flange

KD001566



1 Horquilla 2 Clip 1 Rod clevis 2 Clips

1 **KD001438**

2 **KD001385**

1+2 **FOR27**

Doble efecto magnético

Double Acting Magnetic

Tipo (mirar leyenda)

Type (see legend)

COD: MGW 160 M

Carrera
Stroke

	Tipo - Type		Piston	Eje - Rod	
	D.E	D.V	Magnetic	Acero cromado Chrome plated steel	Acero inox Stainless steel
std M					
E					
G					
P					

C = Carrera estándar Standard stroke [mm]

25 50 75 80 100 125 150 160 200 250 300 320 400 500

Carrera ejemplo – example:
Stroke 50mm= 0050

Ejemplo – example: **MGW 160 M 0050**

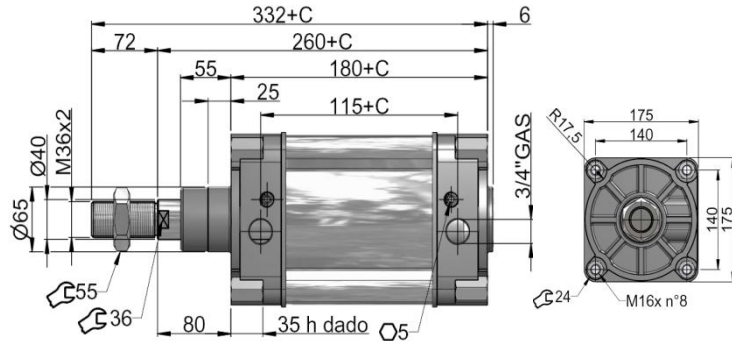
Kit de juntas

Spare part seals kit

COD: MGW 6431 – 160K

MGW

PERFIL MICKEY MOUSE
MICKEY MOUSE PROFILE



Indicaciones: carrera=0 Drawing refers to stroke C=0

Leyenda - Legend

- M** Doble Efecto Magnético Amortiguado con eje cromado
Double Acting Magnetic with Cushions and chrome plated steel Rod
- E** Doble Efecto Magnético Amortiguado con eje inox
Double Acting Magnetic with Cushions and stainless steel Rod
- G** Doble Vástago Pasante Magnético Amortiguado con eje cromado
Double Rod Magnetic with Cushions and chrome plated steel Rod
- P** Doble Vástago Pasante Magnético Amortiguado con eje inox
Double Rod Magnetic with Cushions and stainless steel Rod

Fluido	Fluid	Aire filtrado, lubricado o sin lubricar Filtered lubricated or not lubricated air
Fijaciones	Mountings	ISO 15552 (ISO6431) VDMA 24562
Conexión	Connections	G 3/4"
Presión de trabajo	Working pressure	= 1 ÷ 10 bar = 1,5 ÷ 10 bar
Temperatura ambiente	Working temperature range	-10 ÷ 60°C
Material Vástago	Rod material	Acero Cromado e inox Chrome plated and stainless steel
Material Testeras	End caps material	Aluminio Aluminium
Material Perfil	Tube material	Aluminio anodizado Anodized aluminium
Material Juntas	Seals material	Poliuretano Polyurethane
Fuerza de trabajo (6bar)	Thrust and traction force (6bar)	= 1200 kg = 1128 kg
Consumo x 10mm carrera (6bar)	Consumption x 10mm stroke (6bar)	q _s = 1,40 NI/min q _t = 1,314 NI/min
Lubricante recomendado	Recommended oil	Airmix system Kluber airpres 32 ISO VG 32 32mm ² /s 40°C ISO 3448
Vida útil (en condiciones de trabajo adecuadas)	Life (if properly used)	5000 km
Peso [gr] (C=0 peso 1mm CxC)	Weight [gr] (C=0 weight 1mm CxC)	= 10408 + 8xC = 12475 + 8xC

Doble efecto magnético

Double Acting Magnetic

Tipo (mirar leyenda)

Type (see legend)

COD: MGW 200 M

Carrera
Stroke

	Tipo - Type		Piston	Eje - Rod	
	D.E	D.V	Magnetic	Acero cromado Chrome plated steel	Acero inox Stainless steel
std M					
E					
G					
P					

C = Carrera estándar Standard stroke [mm]

25 50 75 80 100 125 150 160 200 250 300 320 400 500

Carrera ejemplo – example:
Stroke 50mm= 0050

Ejemplo – example: **MGW 200 M 0050**

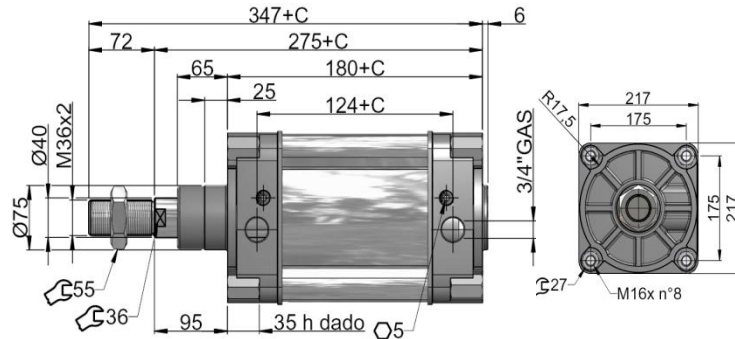
Kit de juntas

Spare part seals kit

COD: MGW 6431 – 200K

MGW

PERFIL MICKEY MOUSE
MICKEY MOUSE PROFILE



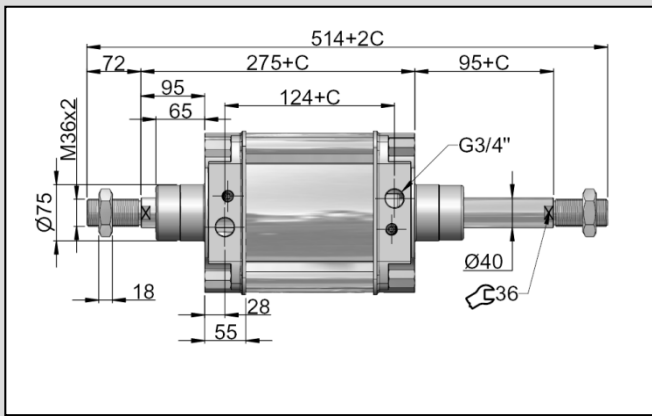
Indicaciones: carrera=0 Drawing refers to stroke C=0

Leyenda - Legend

- M** Doble Efecto Magnético Amortiguado con eje cromado
Double Acting Magnetic with Cushions and chrome plated steel Rod
- E** Doble Efecto Magnético Amortiguado con eje inox
Double Acting Magnetic with Cushions and stainless steel Rod
- G** Doble Vástago Pasante Magnético Amortiguado con eje cromado
Double Rod Magnetic with Cushions and chrome plated steel Rod
- P** Doble Vástago Pasante Magnético Amortiguado con eje inox
Double Rod Magnetic with Cushions and stainless steel Rod

Fluido	Fluid	Aire filtrado, lubricado o sin lubricar Filtered lubricated or not lubricated air
Fijaciones	Mountings	ISO 15552 (ISO6431) VDMA 24562
Conexión	Connections	G 3/4"
Presión de trabajo	Working pressure	= 1 ÷ 10 bar = 1,5 ÷ 10 bar
Temperatura ambiente	Working temperature range	-10 ÷ 60°C
Material Vástago	Rod material	Acero Cromado e inox Chrome plated and stainless steel
Material Testeras	End caps material	Aluminio Aluminium
Material Perfil	Tube material	Aluminio anodizado Anodized aluminium
Material Juntas	Seals material	Poliuretano Polyurethane
Fuerza de trabajo (6bar)	Thrust and traction force (6bar)	= 1882 kg = 1806 kg
Consumo x 10mm carrera (6bar)	Consumption x 10mm stroke (6bar)	q _s = 2,19 NI/min q _t = 2,102 NI/min
Lubricante recomendado	Recommended oil	Airmix system Kluber airpres 32 ISO VG 32 32mm ² /s 40°C ISO 3448
Vida útil (en condiciones de trabajo adecuadas)	Life (if properly used)	5000 km
Peso [gr] (C=0 peso 1mm CxC)	Weight [gr] (C=0 weight 1mm CxC)	= 15118 + 8xC = 17185 + 8xC

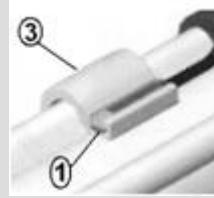
Versión doble vástago Double rod type



Sensor magnético Magnetic sensor

1 Sensor magnético Magnetic sensor

DSM2.C.525: N.A. con cable
de 2,5mts. N.O. with cable
2,5mts

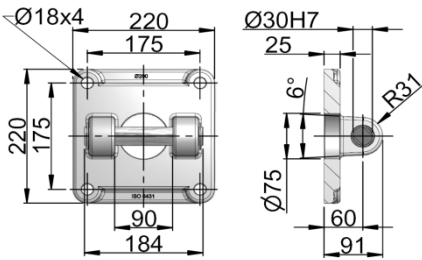


3 Brida Bracket

BMPF06

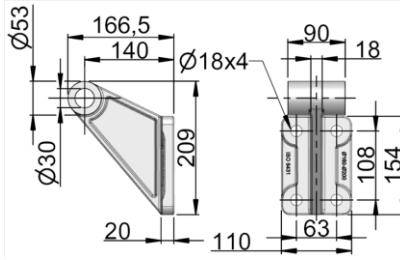
Para más artículos contactar con dpto. comercial Ask for more items to our Sales Department

Fijaciones y Accesorios Fixing and Accessories ISO 15552 (ISO 6431)



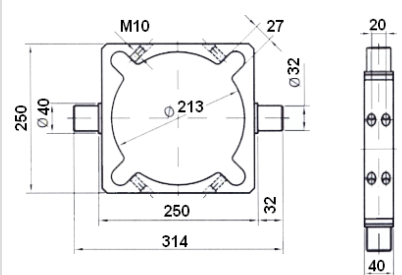
Charnela hembra con perno
Swivel flange with pin

KD001508



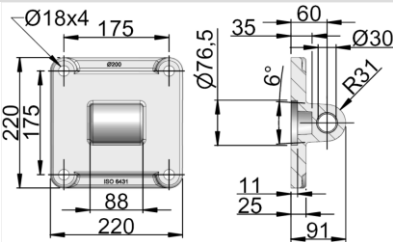
Soporte lateral 90°
Clevis foot for swivel flange

KD001557



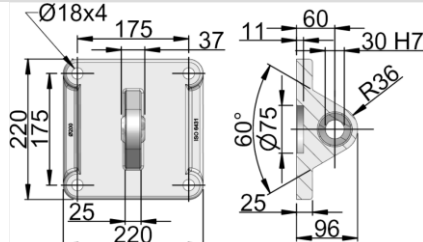
Charnela intermedia regulable
Trunnion clevis

KD001548



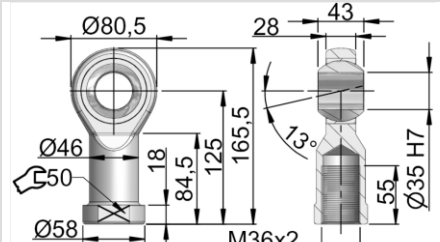
Charnela macho
Swivel flange

KD001528



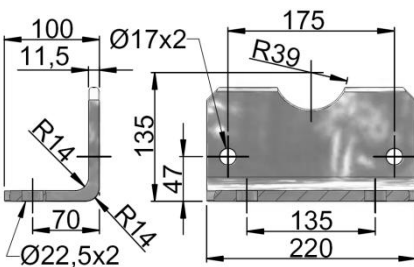
Charnela macho con rótula
Swivel flange with spherical bearing

KD000038



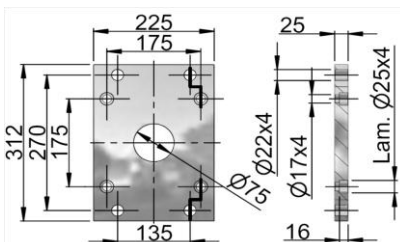
Rótula
Rod eye

KD000010



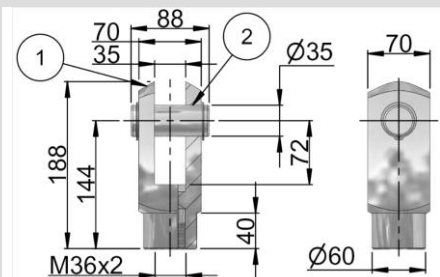
Pata fijación
Angle foot

KD001588



Placa fijación
Flange

KD001568



1 Horquilla 2 Clip 1 Rod clevis 2 Clips

1 KD001439

2 KD001386

1+2 FOR36

Doble efecto magnético
Double Acting Magnetic

Tipo (mirar leyenda)
Type (see legend)

COD: MGW 250 M

Carrera
Stroke

	Tipo - Type		Piston	Eje - Rod	
	D.E	D.V	Magnetic	Acero cromado Chrome plated steel	Acero inox Stainless steel
std M					
E					
G					
P					

C = Carrera estándar Standard stroke [mm]

25 50 75 80 100 125 150 160 200 250 300 320 400 500

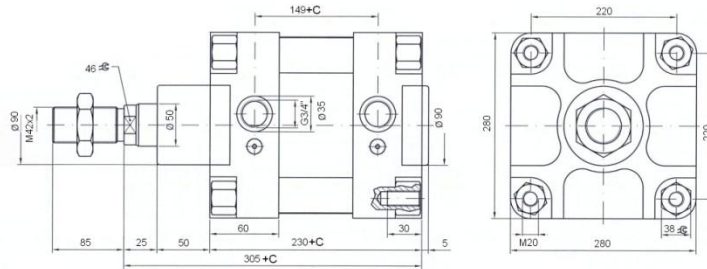
Carrera ejemplo – example:
Stroke 50mm= 0050

Ejemplo – example: **MGW 250 M 0050**

Kit de juntas
Spare part seals kit

COD: MGW 6431 – 250K

MGW
TUBO REDONDO
ROUND PROFILE



Indicaciones: carrera=0 Drawing refers to stroke C=0

Leyenda - Legend

- M** Doble Efecto Magnético Amortiguado con eje cromado
Double Acting Magnetic with Cushions and chrome plated steel Rod
- E** Doble Efecto Magnético Amortiguado con eje inox
Double Acting Magnetic with Cushions and stainless steel Rod
- G** Doble Vástago Pasante Magnético Amortiguado con eje cromado
Double Rod Magnetic with Cushions and chrome plated steel Rod
- P** Doble Vástago Pasante Magnético Amortiguado con eje inox
Double Rod Magnetic with Cushions and stainless steel Rod

Fluido	Fluid	Aire filtrado, lubricado o sin lubricar Filtered lubricated or not lubricated air
Fijaciones	Mountings	ISO 15552 (ISO6431) VDMA 24562
Conexión	Connections	G 3/4"
Presión de trabajo	Working pressure	= 1 ÷ 10 bar = 1,5 ÷ 10 bar
Temperatura ambiente	Working temperature range	-10 ÷ 60°C
Material Vástago	Rod material	Acero Cromado e inox Chrome plated and stainless steel
Material Testeras	End caps material	Aluminio Aluminium
Material Perfil	Tube material	Aluminio anodizado Anodized aluminium
Material Juntas	Seals material	Poliuretano Polyurethane
Fuerza de trabajo (6bar)	Thrust and traction force (6bar)	= 2945 kg = 2827 kg
Consumo x 10mm carrera (6bar)	Consumption x 10mm stroke (6bar)	q _s = 3,43 NI/min q _t = 3,30 NI/min
Lubricante recomendado	Recommended oil	Airmix system Kluber airpres 32 ISO VG 32 32mm ² /s 40°C ISO 3448
Vida útil (en condiciones de trabajo adecuadas)	Life (if properly used)	5000 km
Peso [gr] (C=0 peso 1mm CxC)	Weight [gr] (C=0 weight 1mm CxC)	= 35533 + 30,9xC = 40862 + 30,9xC

Doble efecto magnético

Double Acting Magnetic

Tipo (mirar leyenda)

Type (see legend)

COD: MGW 320 M

Carrera
Stroke

	Tipo - Type		Piston	Eje - Rod	
	D.E	D.V	Magnetic	Acero cromado Chrome plated steel	Acero inox Stainless steel
std M					
E					
G					
P					

C = Carrera estándar Standard stroke [mm]

25 50 75 80 100 125 150 160 200 250 300 320 400 500

Carrera ejemplo – example:
Stroke 50mm= 0050

Ejemplo – example: **MGW 320 M 0050**

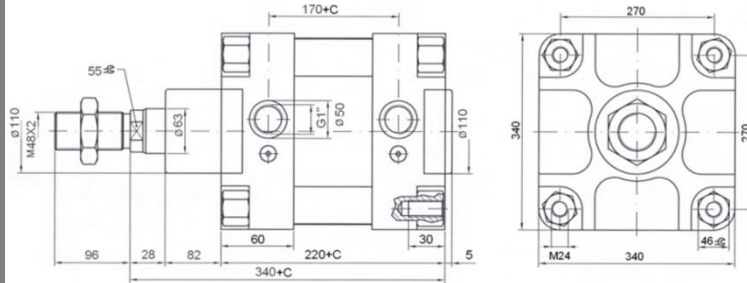
Kit de juntas

Spare part seals kit

COD: MGW 6431 – 320K

MGW

TUBO REDONDO
ROUND PROFILE



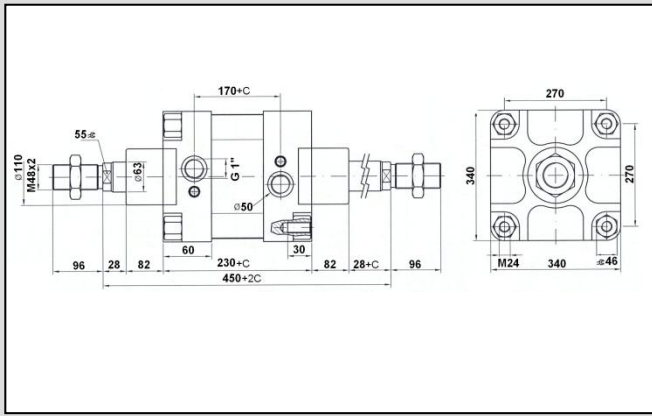
Indicaciones: carrera=0 Drawing refers to stroke C=0

Leyenda - Legend

- M** Doble Efecto Magnético Amortiguado con eje cromado
Double Acting Magnetic with Cushions and chrome plated steel Rod
- E** Doble Efecto Magnético Amortiguado con eje inox
Double Acting Magnetic with Cushions and stainless steel Rod
- G** Doble Vástago Pasante Magnético Amortiguado con eje cromado
Double Rod Magnetic with Cushions and chrome plated steel Rod
- P** Doble Vástago Pasante Magnético Amortiguado con eje inox
Double Rod Magnetic with Cushions and stainless steel Rod

Fluido	Fluid	Aire filtrado, lubricado o sin lubricar <i>Filtred lubricated or not lubricated air</i>
Fijaciones	Mountings	ISO 15552 (ISO6431) VDMA 24562
Conexión	Connections	G 3/4"
Presión de trabajo	Working pressure	= 1 ÷ 10 bar = 1,5 ÷ 10 bar
Temperatura ambiente	Working temperature range	-10 ÷ 60°C
Material Vástago	Rod material	Acero Cromado e inox <i>Chrome plated and stainless steel</i>
Material Testeras	End caps material	Aluminio <i>Aluminium</i>
Material Perfil	Tube material	Aluminio anodizado <i>Anodized aluminium</i>
Material Juntas	Seals material	Poliuretano <i>Polyurethane</i>
Fuerza de trabajo (6bar)	Thrust and traction force (6bar)	= 4825 kg = 4632 kg
Consumo x 10mm carrera (6bar)	Consumption x 10mm stroke (6bar)	q _s = 2,19 NI/min q _t = 2,102 NI/min
Lubricante recomendado	Recommended oil	Airmix system Kluber airpres 32 ISO VG 32 32mm ² /s 40°C ISO 3448
Vida útil (en condiciones de trabajo adecuadas)	Life (if properly used)	5000 km
Peso [gr] (C=0 peso 1mm CxC)	Weight [gr] (C=0 weight 1mm CxC)	= =

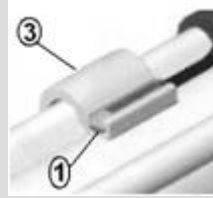
Versión doble vástago Double rod type



Sensor magnético Magnetic sensor

1 Sensor magnético
Magnetic sensor

DSM2.C.525: N.A. con cable
de 2,5mts. N.O. with cable
2,5mts

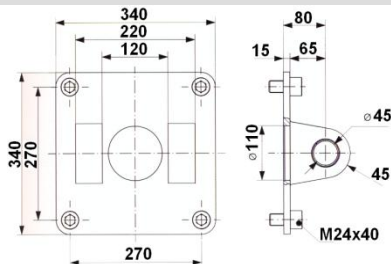


3 Brida
Bracket

BMPF06

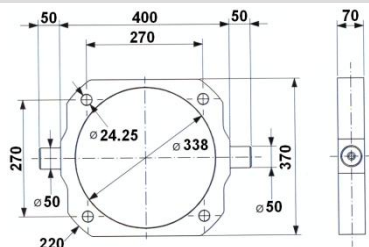
Para más artículos contactar con dpto. comercial Ask for more items to our Sales Department

Fijaciones y Accesorios Fixing and Accessories ISO 15552 (ISO 6431)



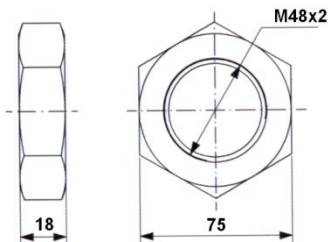
Charnela hembra
Swivel flange

KD001510



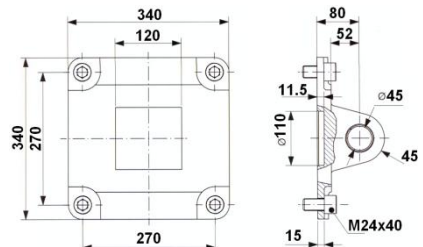
Charnela intermedia
Trunnion clevis

KD001549.320



Tuerca Vástago
Nut for piston rod

CD DS 320



Charnela macho
Swivel flange

KD001530