



GREEN ELECTRONICS



SMC107

Supports



ISO
9001



ISO
14001



BS OHSAS
18001:2007



SAURO[®]

ELECTRONIC CONNECTORS

by the law

SMC 107

Modular Supports



Width of PCB:
107.5 mm (4.232 in)



Support Type:
MODULAR



Standard Colour:
GREEN



Thickness of PCB:
.063 in (1.6 mm)



Material:
PA6.6 (UL94-V0)



SMC107



SMC 107

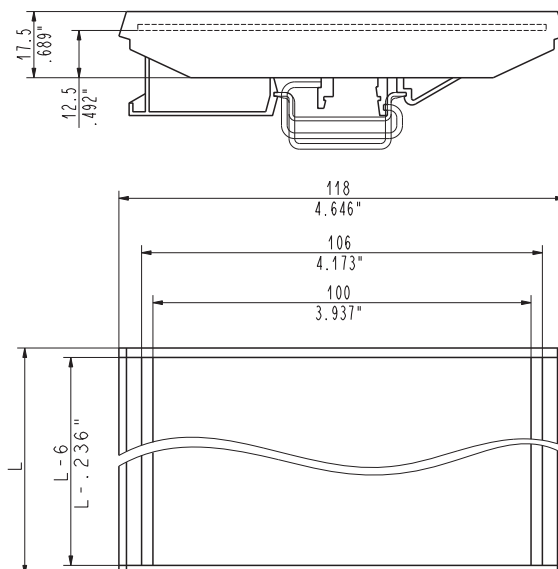
▶ **Modular Supports for 107.5 mm (4.232 in) Wide Boards**

Base Elements and **Lateral Elements** are combined together to obtain PCB Supports according to the table on the next page.
At least one of the **Base Elements** must be provided with a **Hook**.

2 to 4 **Stiffening Copper Alloy Elements** must be inserted between any two **Base Elements**.

For a correct mounting of the PCB Support, if an **SMC107S016 Base Element** is used, it **must be positioned between two SMC107S035 or SMC107P035 Base Elements**.

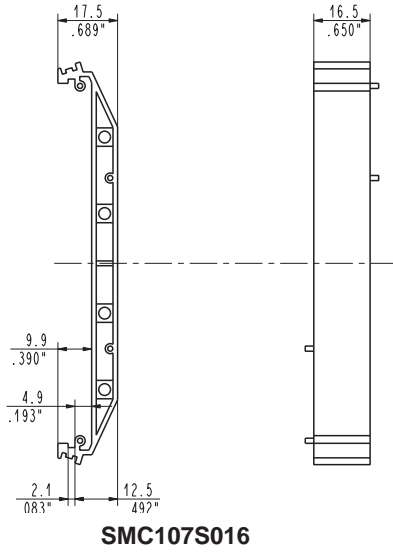
▶ **Modular Supports for 107.5 mm (4.232 in) Wide Boards**



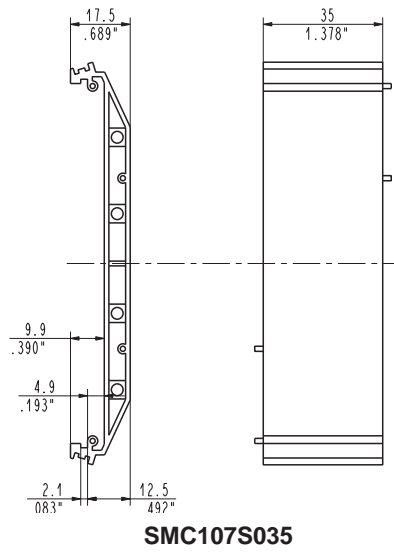


- 1 SMC107T000
- 2 SMC107P035
- 3 SMC107S00T
- 4 SMC107S035
- 5 SMC107S016
- 6 SMC107P035
- 7 SMC107T000

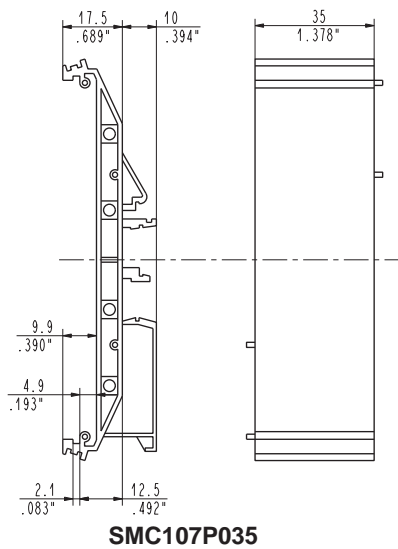
Base Element



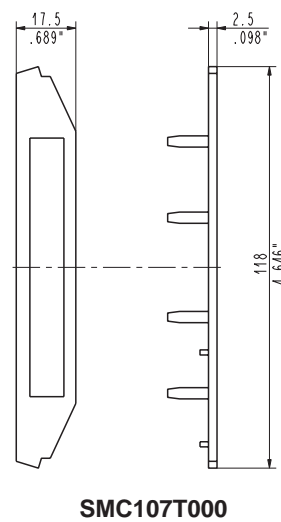
Base Element



Base Element with Hook



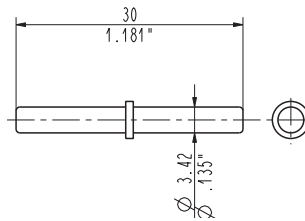
Lateral Element



Description	Part-Number	Pcs / pack
Base Element	SMC107S016	50
Base Element	SMC107S035	50
Base Element with Hook	SMC107P035	50
Lateral Element	SMC107T000	100

Modular Supports

Stiffening Copper Alloy Element



SMC107S00T

SMC107S00T

Stiffening Elements

Stiffening Copper Alloy Elements are used to increase the **strength** of the **Modular Supports** and must be inserted into the proper Base Element holes at every juncture between an Element and the adjacent one.

They can be used from 2 to 4 per side between two SMC107S035 or SMC107P035 Elements, while only 2 per side are needed for the SMC107S016 Element.

Description	Part-Number	Pcs / pack
Stiffening Copper Alloy Element	SMC107S00T	100

The following table shows the configuration of support elements and the corresponding total length of the assembled support and the length of the PCB.

Length of PCB		Length of support		Lateral Element	Base Element	Base Element	Base Element With Hook	Stiffening Copper Alloy Element
(mm)	(in)	(mm)	(in)	SMC107T000	SMC107S016	SMC107S035	SMC107P035	SMC107S00T
38.50	1.516	40.00	1.575	2			1	
55.00	2.165	56.50	2.224	2	1		1	
73.50	2.894	75.00	2.953	2			2	2 ÷ 4
90.00	3.543	91.50	3.602	2	1		2	4
108.50	4.272	110.00	4.331	2		1	2	4 ÷ 8
125.00	4.921	126.50	4.980	2	1	1	2	6 ÷ 8
143.50	5.650	145.00	5.709	2		2	2	6 ÷ 12
160.00	6.299	161.50	6.358	2	1	2	2	8 ÷ 12
178,50 mm	7.028 in	180,00 mm	7.087 in	2		3	2	8 ÷ 16

EXAMPLES OF INSTALLATION

SMC 107 Modular Supports

