



# CREATUFT

CREATIVE WOOL FLOORING



Creatief met wol • Savoir-faire en laine • Runs on wool • Kreativ mit Wolle



Onze basis: zuivere scheerwol  
Laine : notre point de départ  
Wool: our starting point  
Wolle: unsere Quelle



Duurzaam beleid van grondstof tot eindproduct  
Fabriqué avec nos plus grands soins  
Care and consideration in manufacture  
Mit grösster Sorgfalt produziert



Ons eindproduct: pure luxe  
Le résultat final est du pure luxe  
Our end product: pure luxury  
Unser Endprodukt: reiner Luxus



Aran,  
100% pure wool



4+5 M

AA7AE99C  
www.gor-tilo.it



Jute



69

4+5 m



68

4+5 m



71

4+5 m



67

4+5 m



41

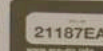
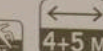
4+5 m



Tufted



Berlin,  
100% pure wool



4+5 M

21187EAD



\*\*\*\*

Jute



107

4+5 m



115

4+5 m



276

4+5 m



516

4+5 m



279

4+5 m



Tufted



# Sydney, 100% pure wool



Jute



199

4+5 m



103

4+5 m



100

4+5 m



101

4+5 m



174

4+5 m



102

4+5 m

Tufted

# Wellington, 100% pure wool



Jute



299

4+5 m



203

4+5 m



200

4+5 m



201

4+5 m



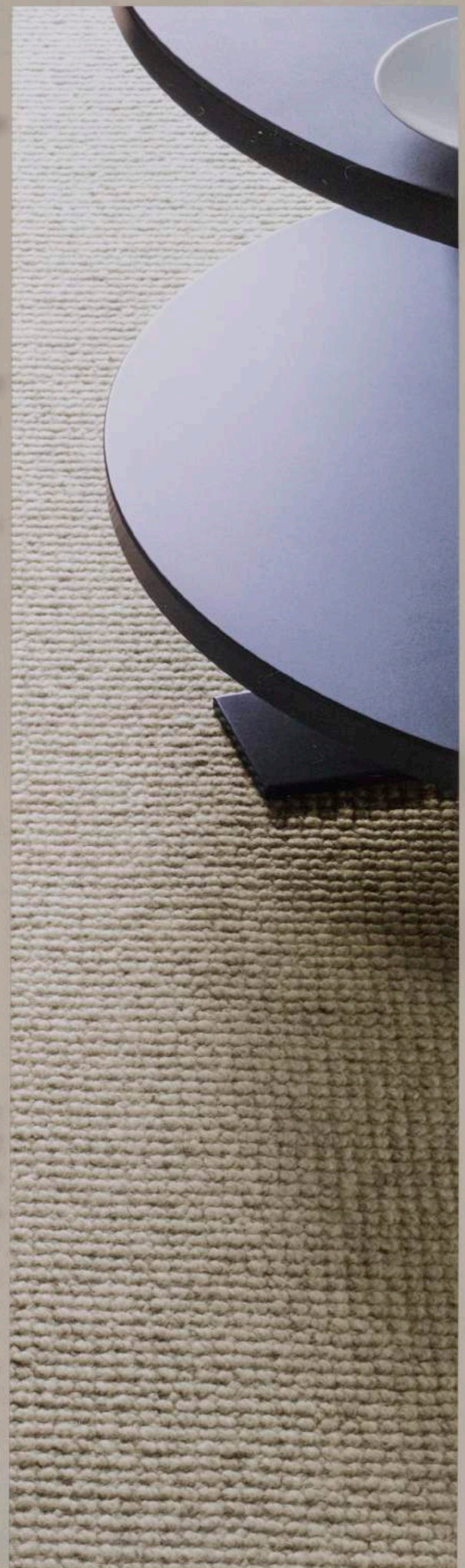
2728

4+5 m



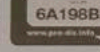
202

4+5 m



Tufted

# Taiga, 100% pure wool

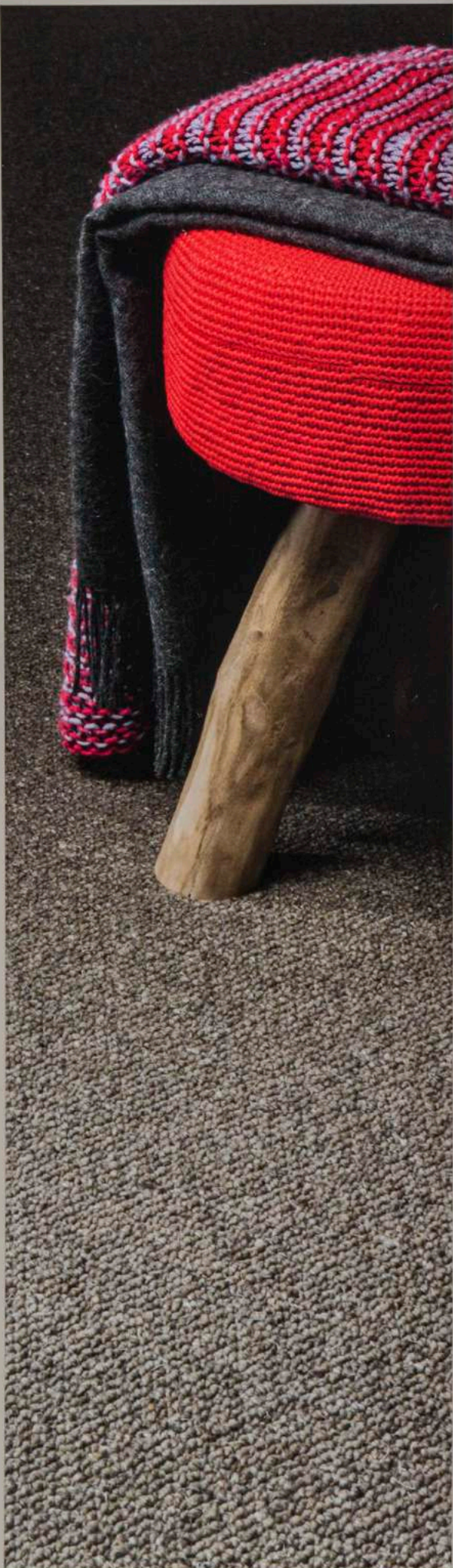


4+5 M

6A198B26  
www.pur.de.info



Actionback



2

4+5 m



4

4+5 m



8

4+5 m



5

4+5 m



4159

+5 m



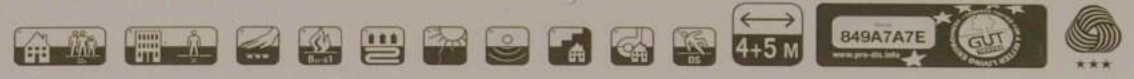
6

4+5 m

Tufted



Oxford,  
100% pure wool



Jute



3991 4+5 m



3992 4+5 m



3994 4+5 m



3993 4+5 m



3998 4+5 m



3997 4+5 m



3995 4+5 m

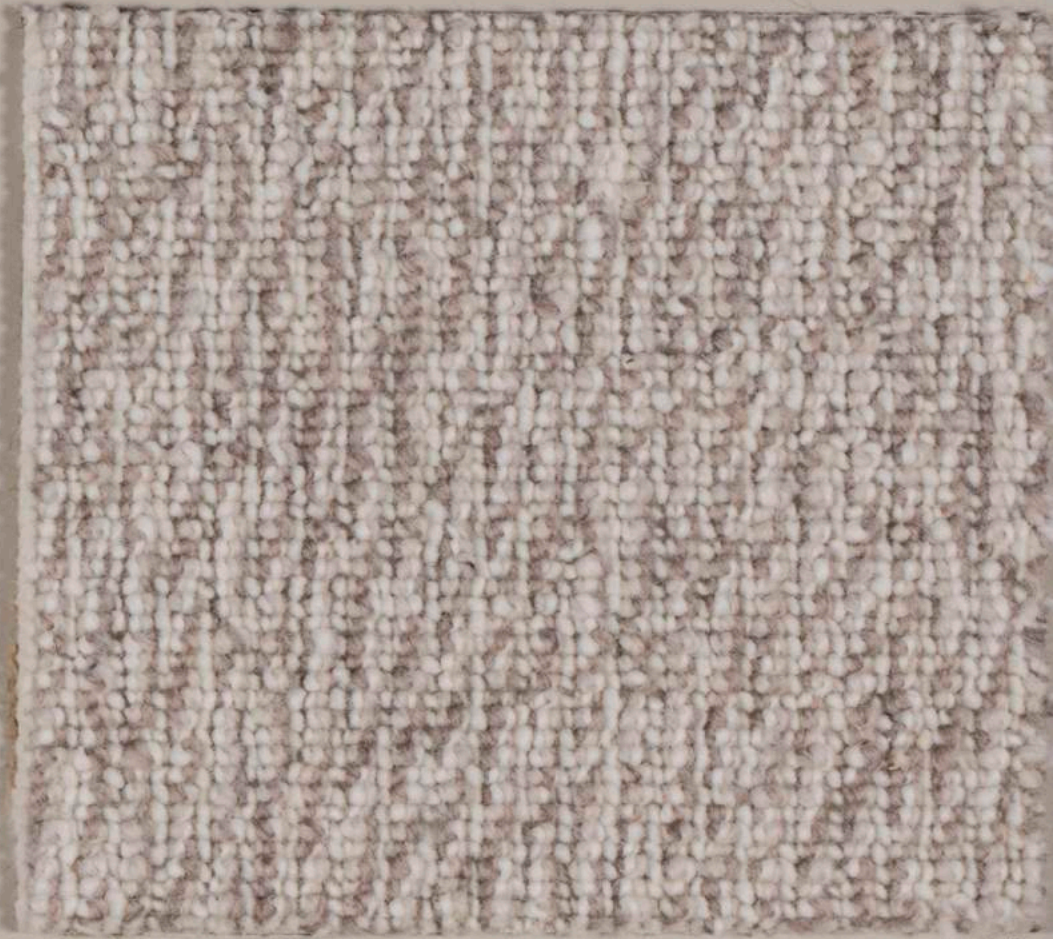


Tufted



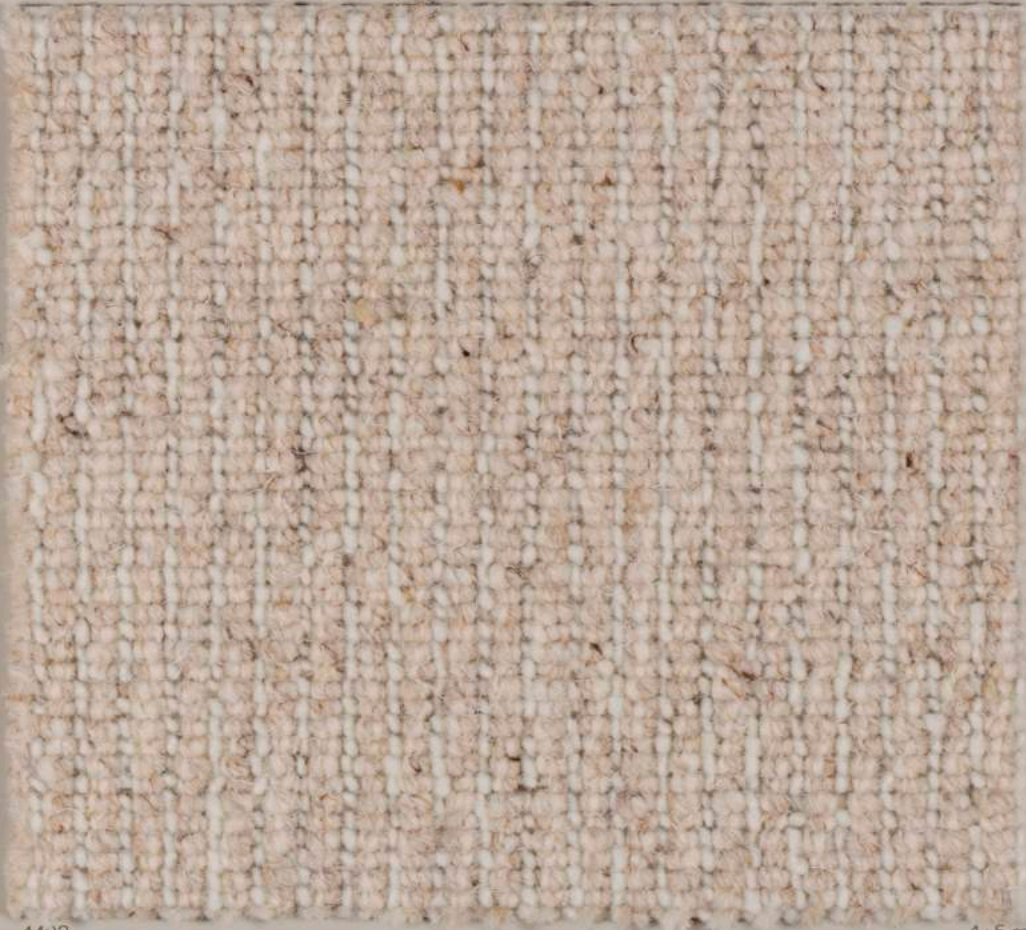
4428

4+5 m



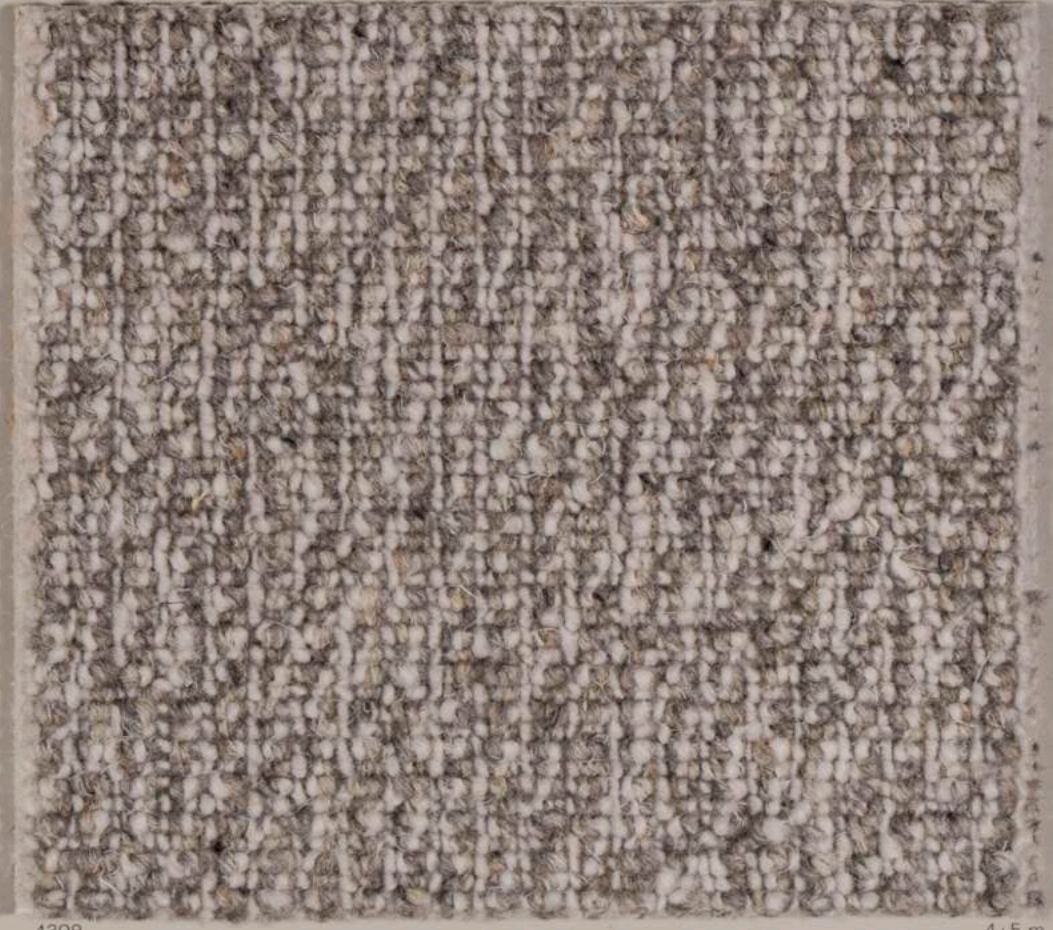
4397

4+5 m



4402

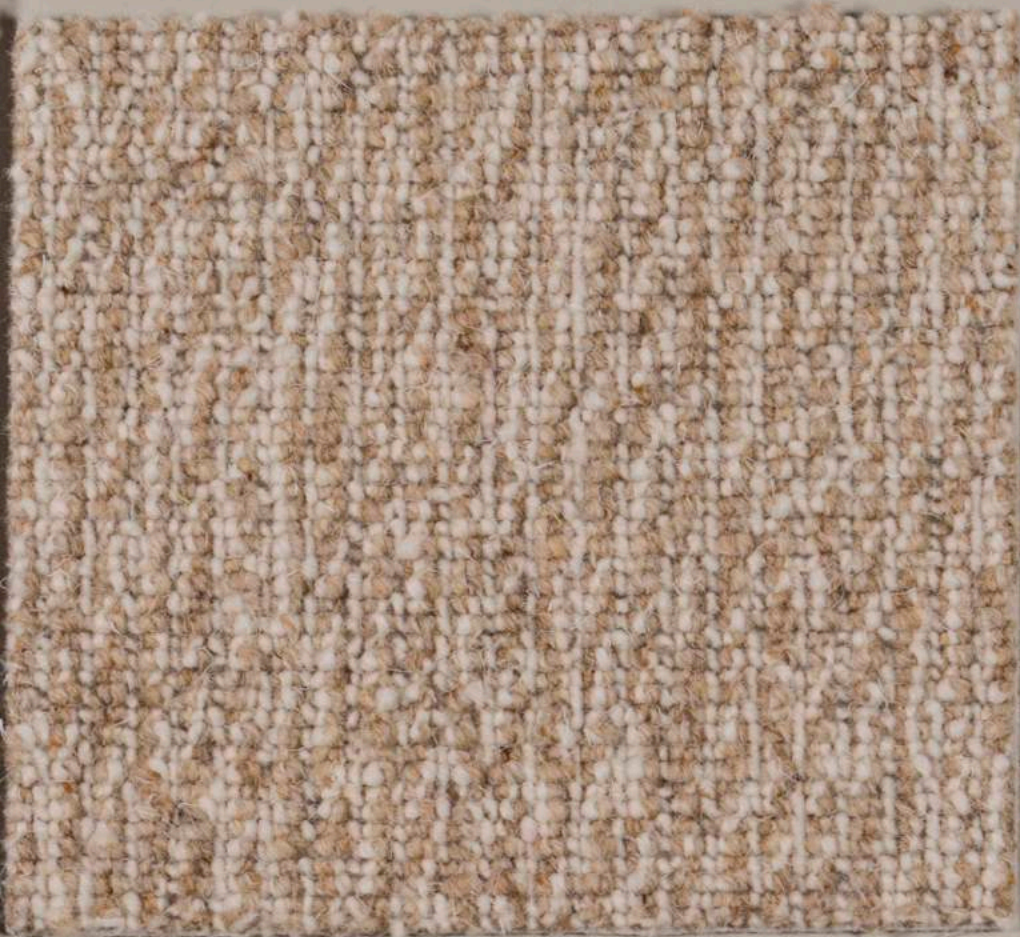
4+5 m



4398

4+5 m

Tufted



4425

4+5 m



4403

4+5 m



Tufted

# London, 100% pure wool



4+5 M

50AC8413

GUT



Actionback



28

4+5 m



17

4+5 m



81

4+5 m



19

4+5 m



16

4+5 m

Tufted

# Tanger, 100% pure wool



4+5 M

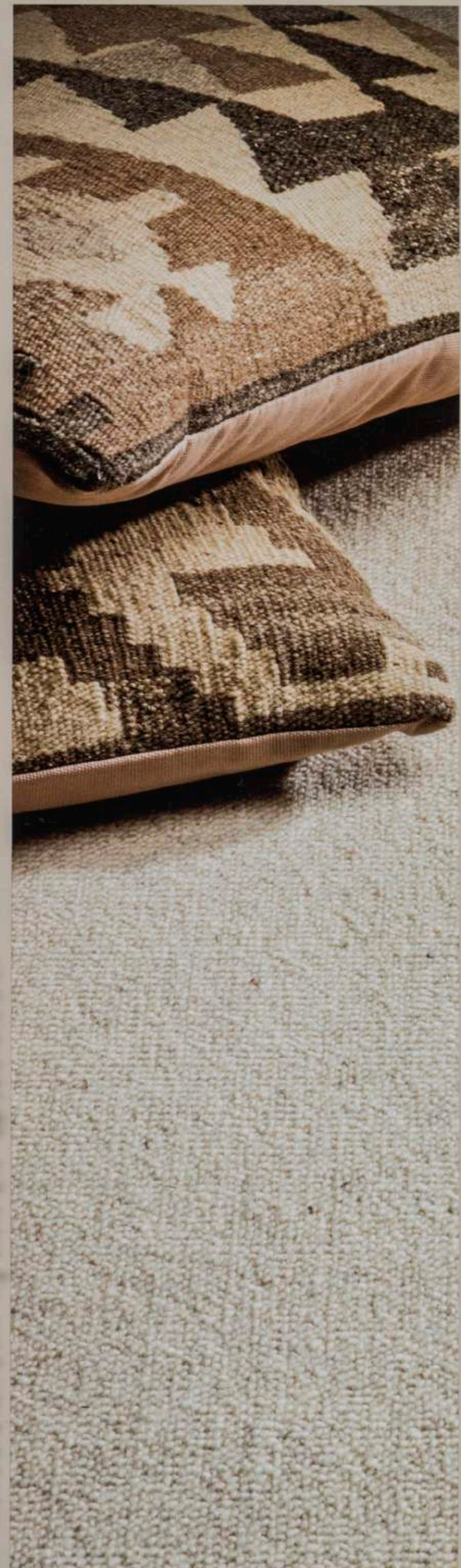
BABF83D1  
www.gvt.info

E3CB9FC1  
www.gvt.info



Actionback

Feltbacking



549

4+5 m

598

4+5 m

596

4+5 m

552

4+5 m

550

4+5 m

Tufted

Sintra, 100% pure wool

Sintra Tiles, 100% pure wool



Actionback

Bitumen



2607 - 4+5 m



2615 - 4+5 m



2647 - 4+5 m



2663 - 4+5 m



2665 - 4+5 m



2646 - 4+5 m



2666 - 4+5 m



2661 - 4+5 m

26070 - 50 x 50 cm

26150 - 50 x 50 cm

26470 - 50 x 50 cm

26630 - 50 x 50 cm

26650 - 50 x 50 cm

26460 - 50 x 50 cm

26660 - 50 x 50 cm

26610 - 50 x 50 cm

Bitumen

Tufted

Ceres,  
100% pure wool



4 M

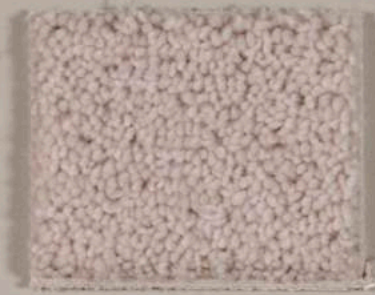
BA329594  
www.pur-tila.info



Actionback



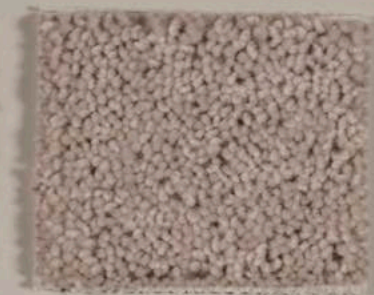
3761 4 m



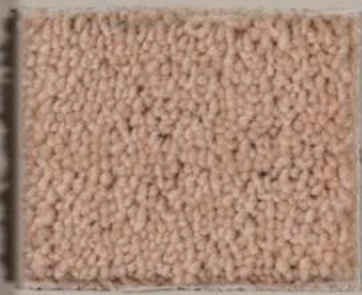
3184 4 m



3013 4 m



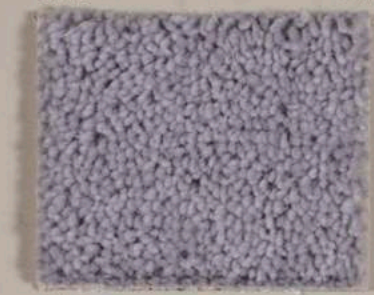
3048 4 m



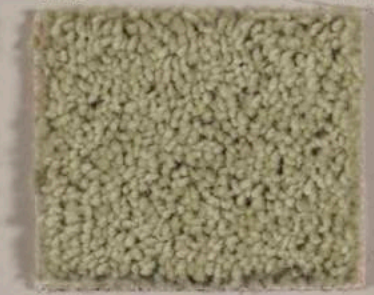
3335 4 m



3764 4 m



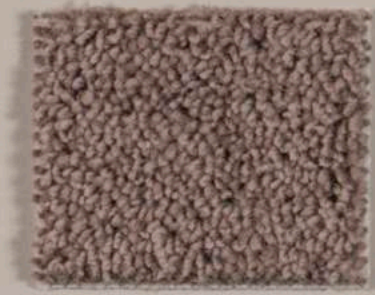
3106 4 m



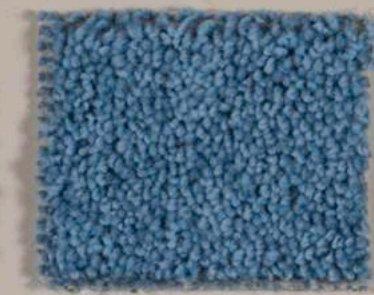
3072 4 m



3333 4 m



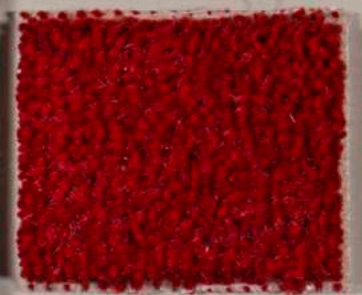
3585 4 m



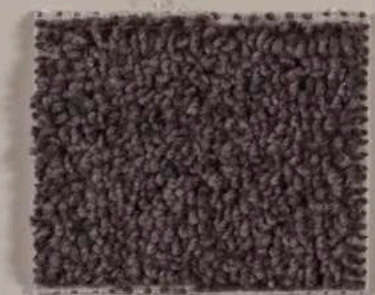
3346 4 m



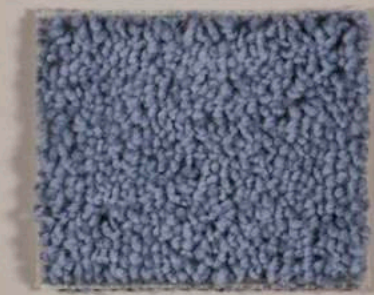
3597 4 m



3768 4 m



3350 4 m



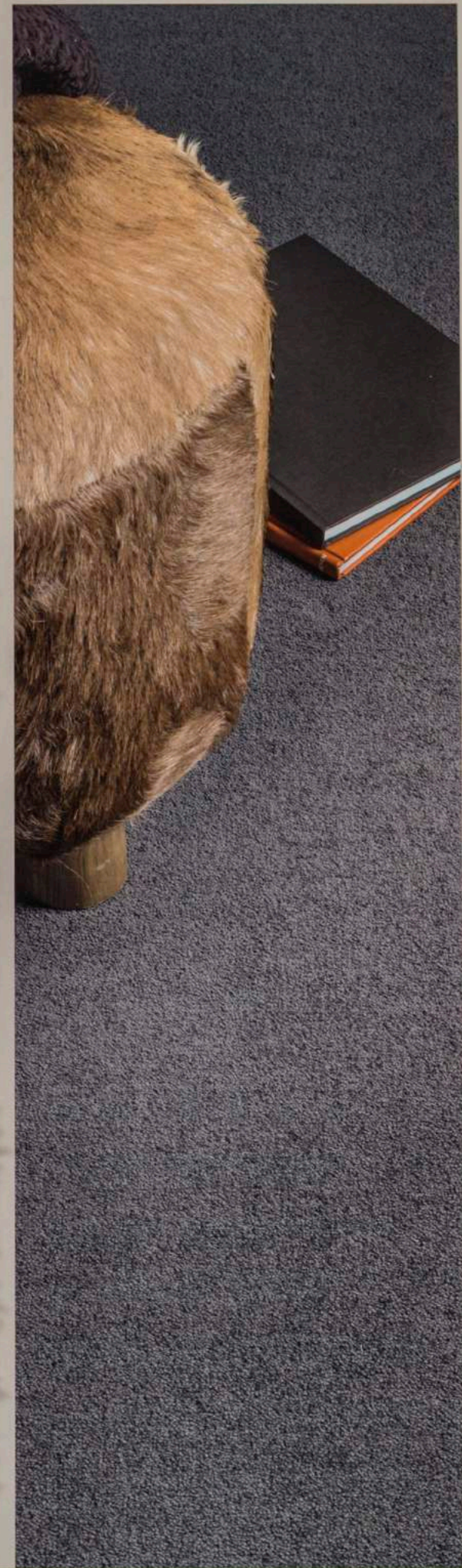
3379 4 m



3089 4 m



3350 4 m



Tufted

# Sheba, 100% pure wool



Actionback

1184 4+5 m	1108 5 m	1048 4+5 m	1585 5 m
1567 5 m	1761 4+5 m	1764 4+5 m	1581 4+5 m
1335 4+5 m	1333 5 m	1045 5 m	1768 5 m
1031 5 m	1025 5 m	1072 4+5 m	1196 5 m
1041 5 m	1379 5 m	1346 4+5 m	1599 5 m
1013 4+5 m	1106 4+5 m	1597 5 m	1089 5 m

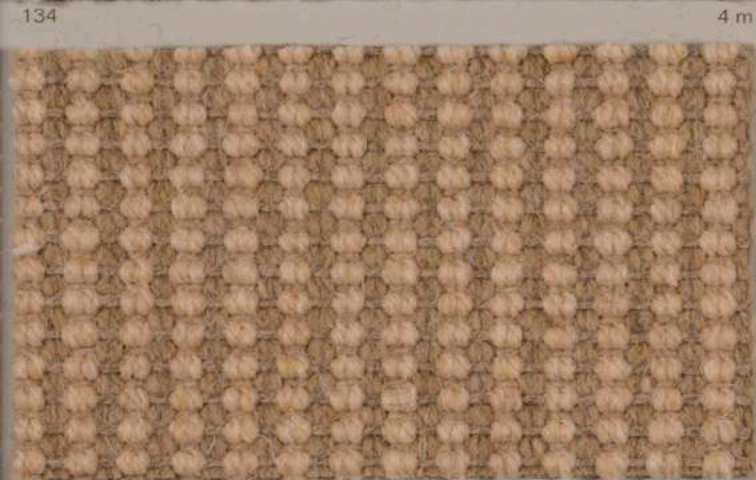
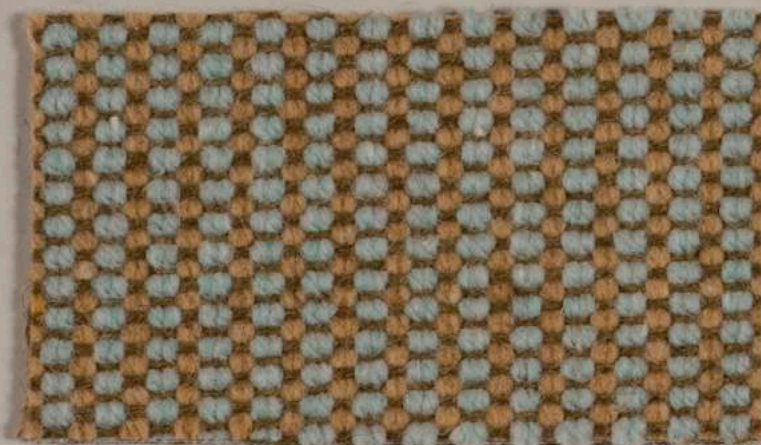
Tufted



# Miami, 100% pure wool



Jute



Flat Woven



Tivoli,



95AEB24B

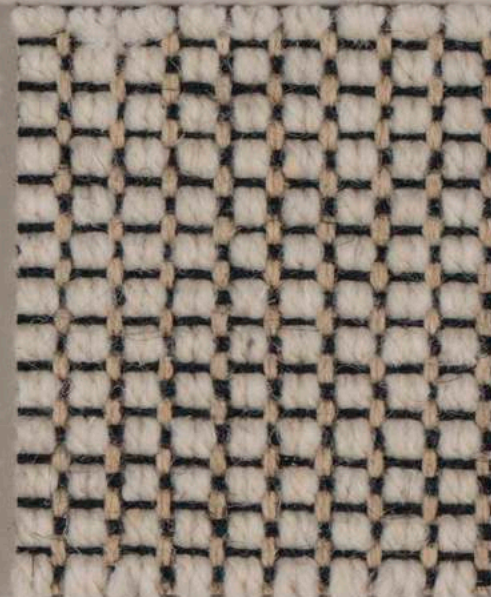


100% pure wool



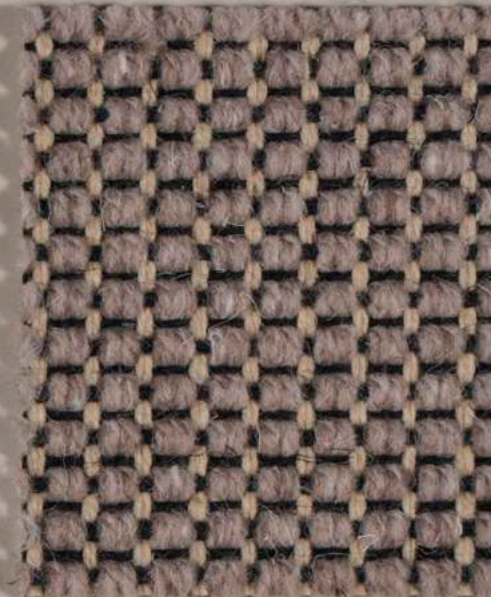
628

4 m



624

4 m



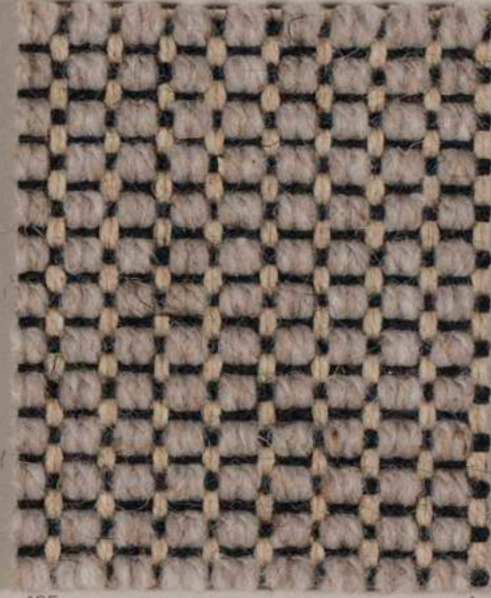
625

4 m



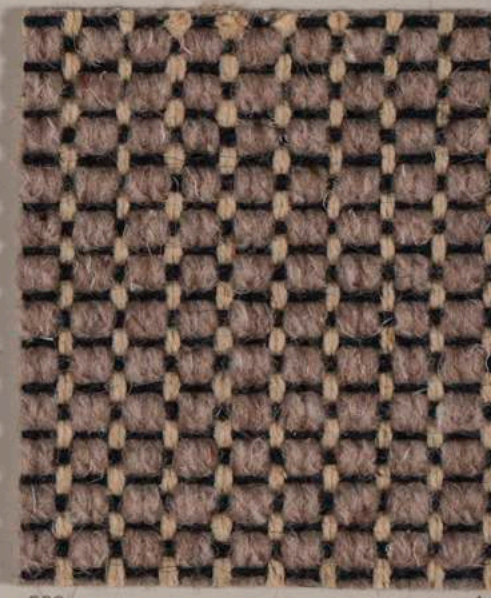
65281

4 m



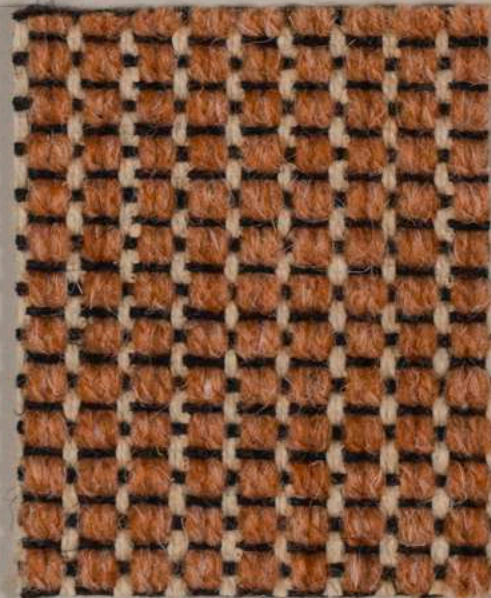
425

4 m



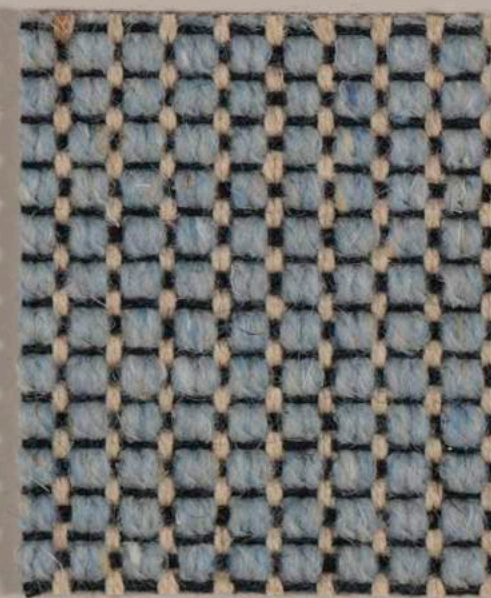
528

4 m



526

4 m



627

4 m



385

4 m

Flat Woven



Porto,  
100% pure wool



Jute



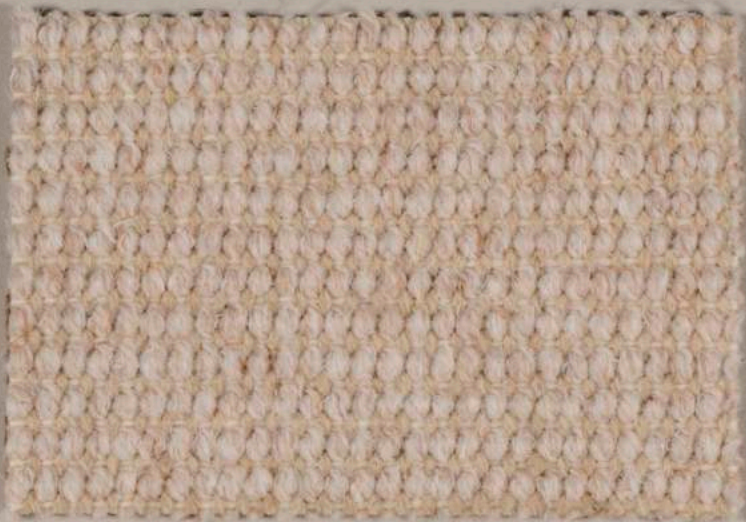
1

4 m



73

4 m



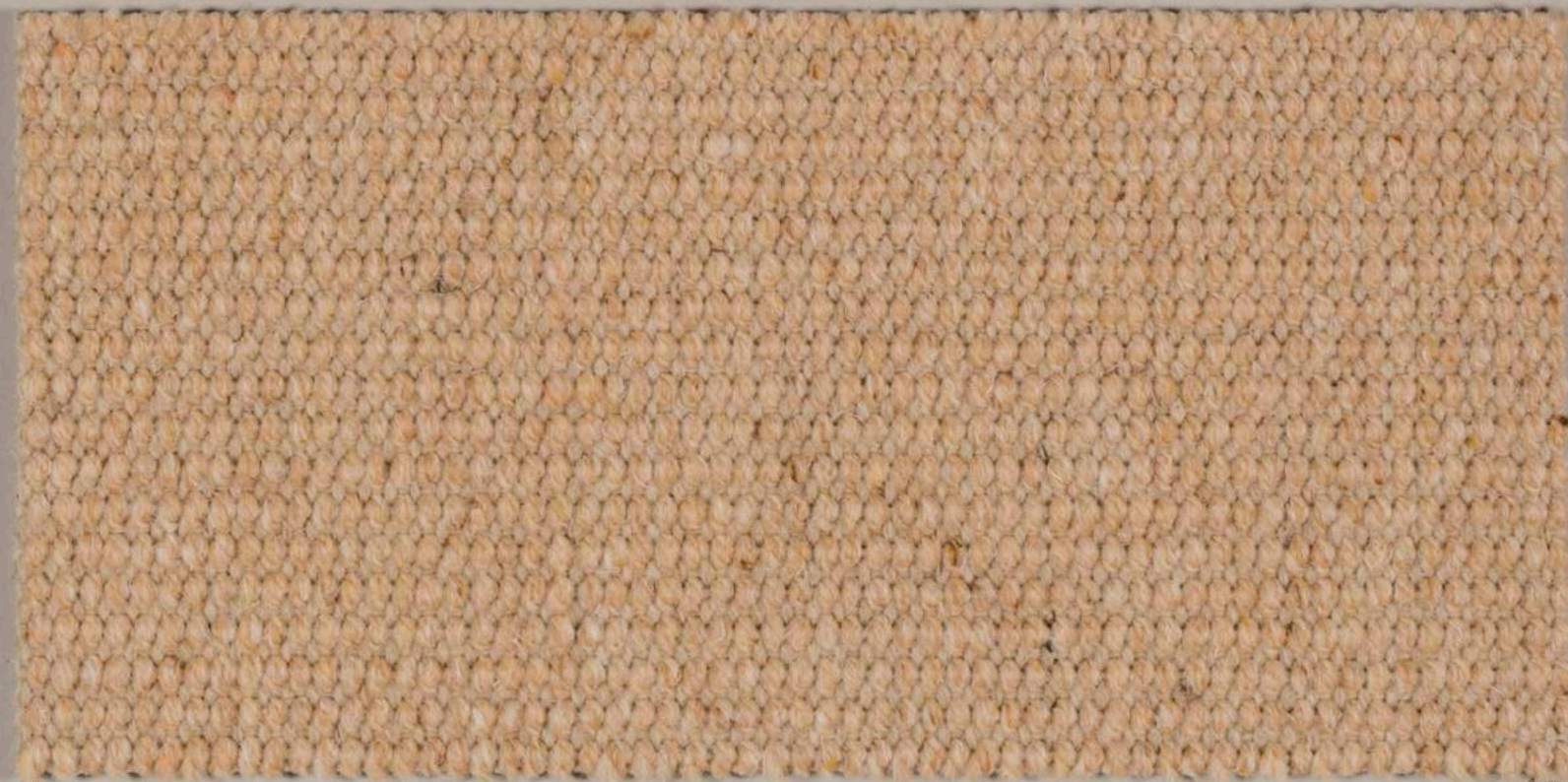
10

4 m



18

4 m



4 m

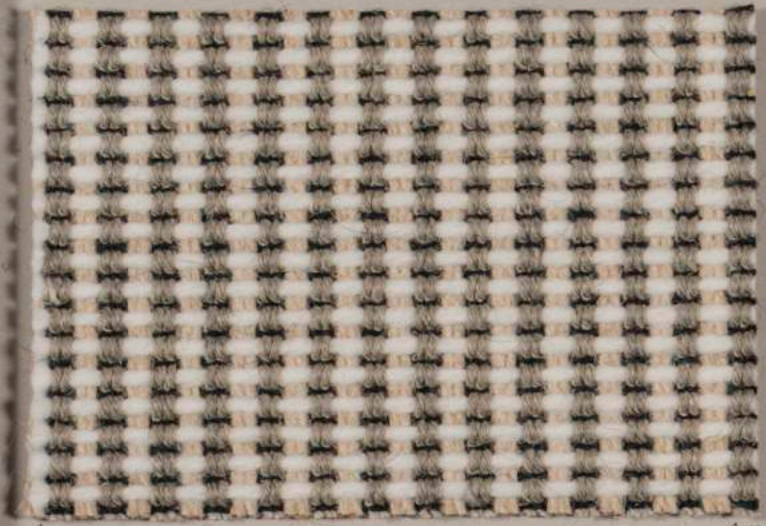
Flat Woven

# Flanders,

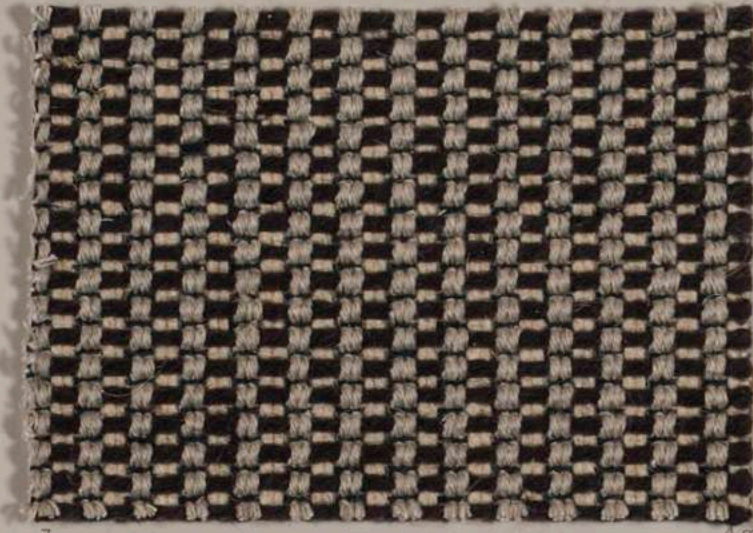
55% Wool + 45% Flax



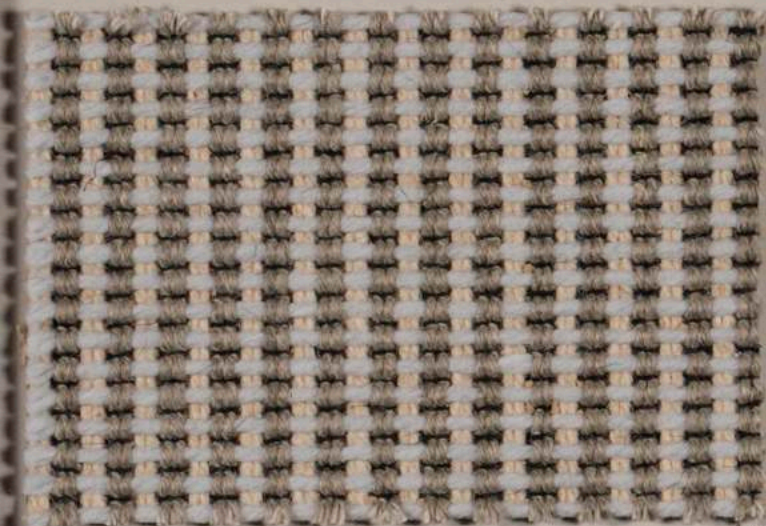
Jute



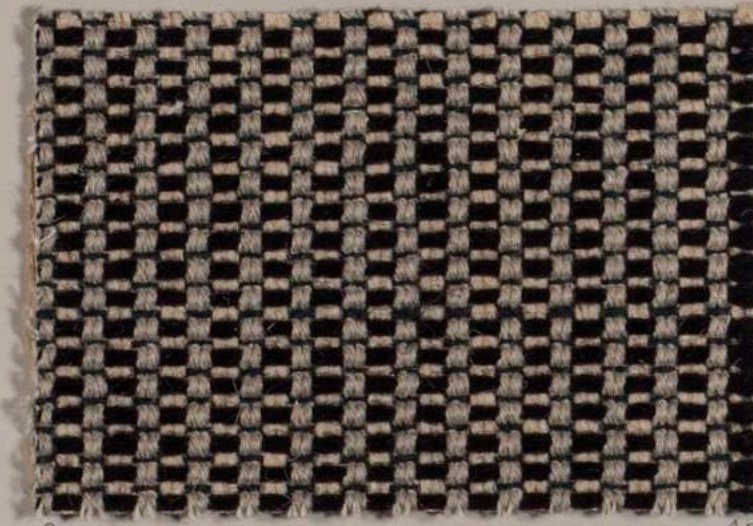
4 m



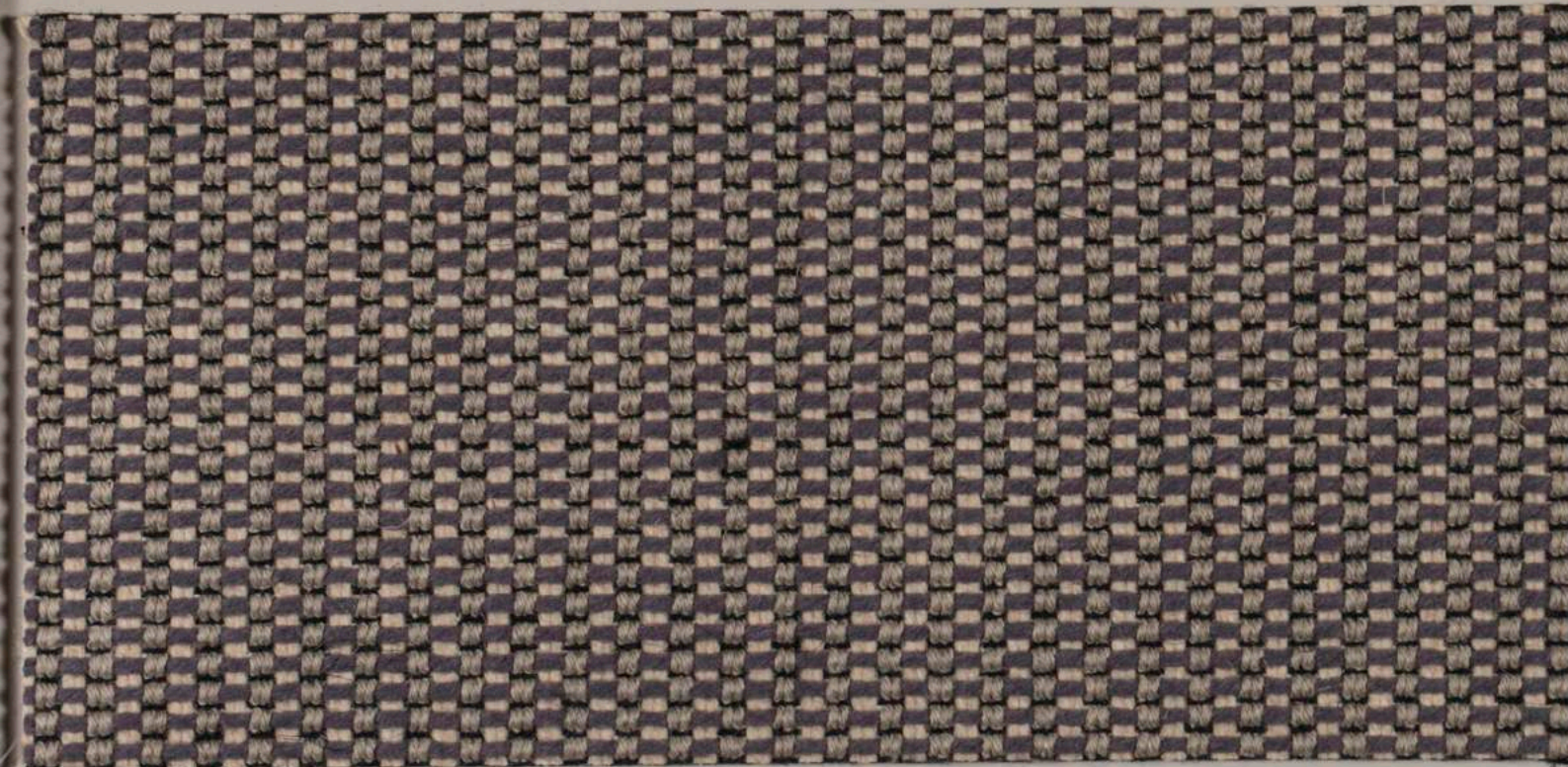
4 m



4 m



4 m



4 m



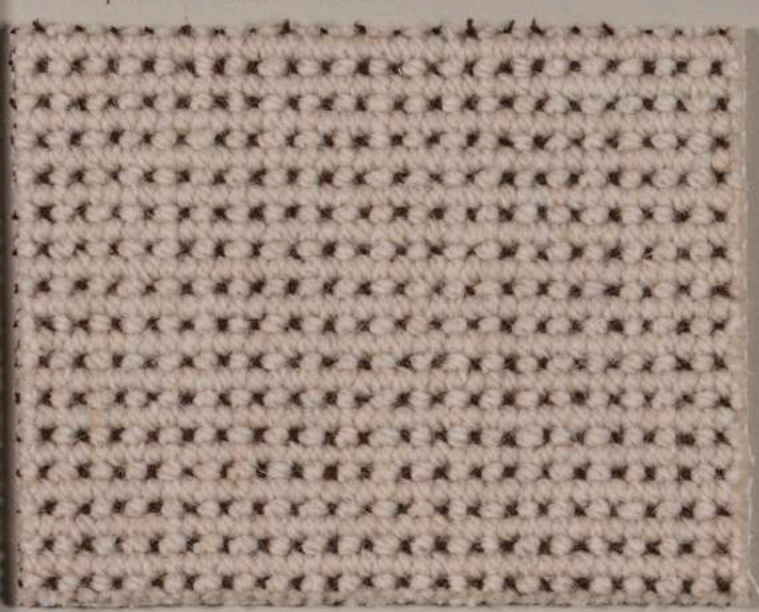
Flat Woven



Iona, 92% pure wool + 8% Linen



Woven



45

4 m



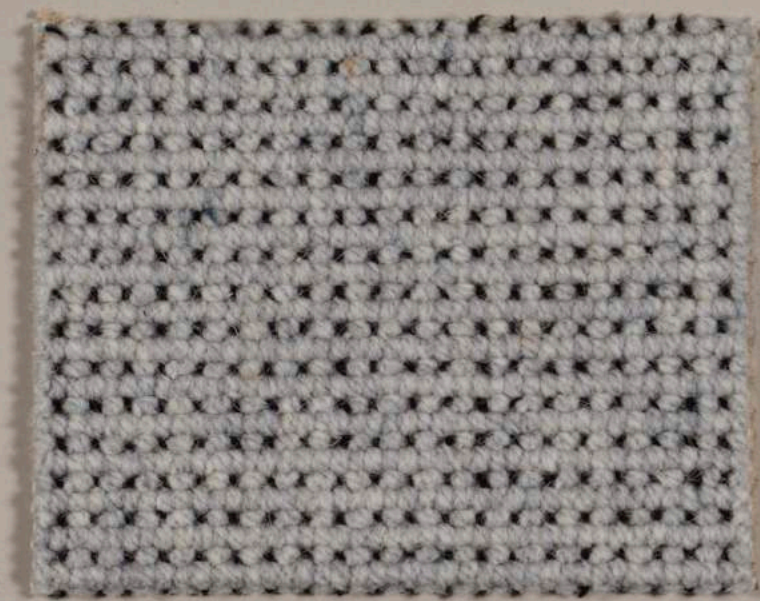
44

4 m



46

4 m



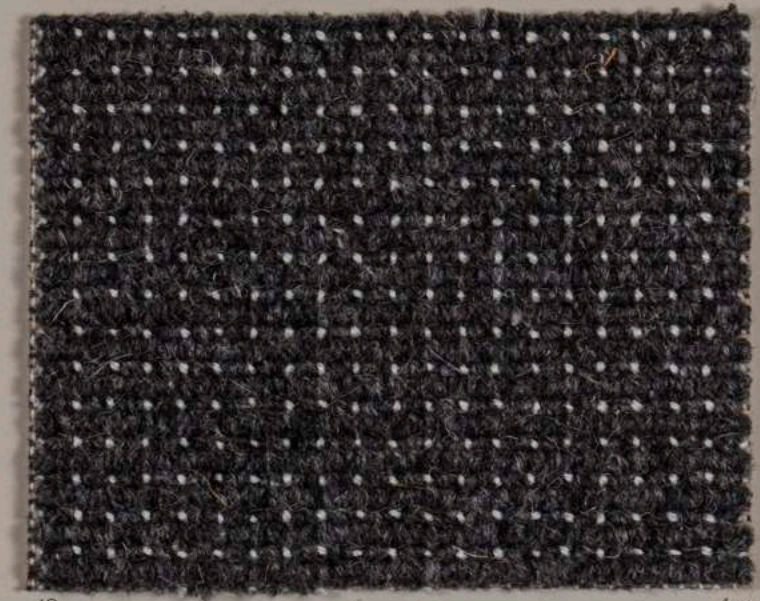
50

4 m



47

4 m



49

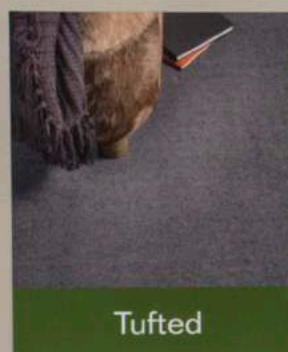
4 m







# TECHNISCHE GEGEVENS / DONNÉES TECHNIQUES TECHNICAL SPECIFICATIONS / TECHNISCHE DATEN



Tufted



Flat Woven



Wilton Woven

KWALITEIT, QUALITÉ, QUALITY, QUALITÄT	FABRICATIETECHNIEK, MÉTHODE DE FABRICATION, MANUFACTURING PROCESS, HERSTELLUNGS-TECHNIK	POOL, COUCHE D'USURE, PILE, POL	POOLGEWICHT, POIDS DE LA COUCHE D'USURE, PILE WEIGHT, POLGEWICHT	TUFTDOEK, SUPPORT, PRIMARY BACKING, TRÄGERGE- WEBE	RUG, DOSSIER, BACKING, RÜCKEN	TOTAALGEWICHT, POIDS TOTAL, TOTAL WEIGHT, GESAMTGEWICHT	TOTALE HOOGTE, HAUTEUR TOTALE, TOTAL HEIGHT, GESAMTHÖHE	BREEDTE, LARGEUR, WIDTH, BREITE	LENGTE, LONGUEUR, LENGTH, LÄNGE	DOP	TOEPASSINGEN, APPLICATIONS, EINSATZBEREICH
Aran	Tufted, 1/2" luxurious berber loop pile, 6-ply yarn	100% pure wool	2200 g/m <sup>2</sup>	100% PP	Jute	3400 g/m <sup>2</sup>	12 mm	ca. 400/500 cm	ca. 30 m	1020-122316	
Berlin	Tufted, 1/4" structured loop pile, 2-ply yarn	100% pure wool	1300 g/m <sup>2</sup>	100% PP	Jute	2450 g/m <sup>2</sup>	8 mm	ca. 400/500 cm	ca. 30 m	1020-113880	
Ceres	Tufted, 1/8" cut pile, twisted, 2-ply washed yarn, heat set	100% pure wool	1400 g/m <sup>2</sup>	100% PP	Actionback	2500 g/m <sup>2</sup>	10,5 mm	ca. 400 cm	ca. 30 m	1020-113750	
Hawai	Tufted, 5/32" structured loop pile multiplied yarn	100% pure wool	1160 g/m <sup>2</sup>	100% PP	Jute	2400 g/m <sup>2</sup>	8 mm	ca. 400/500 cm	ca. 30 m	1020-123326	
London	Tufted, 1/4" loop pile, 2-ply yarn	100% pure wool	1150 g/m <sup>2</sup>	100% PP	Actionback	2300 g/m <sup>2</sup>	8 mm	ca. 400/500 cm	ca. 30 m	1020-119077	
Malta	Tufted, 1/2" luxurious berber loop pile, felted yarn	100% pure wool	1900 g/m <sup>2</sup>	100% PP	Jute	3220 g/m <sup>2</sup>	13,5 mm	ca. 400/500 cm	ca. 30 m	1020-113268	
Oxford	Tufted, 1/5" loop pile, multiplied yarn	100% pure wool	1350 g/m <sup>2</sup>	100% PP	Jute	2500 g/m <sup>2</sup>	8,7 mm	ca. 400/500 cm	ca. 30 m	1020-121120	
Sheba	Tufted, 1/10" cut pile, 2-ply yarn, chemset, Piece dyed	100% pure wool	1200 g/m <sup>2</sup>	100% PP	Actionback	2100 g/m <sup>2</sup>	9,5 mm	ca. 500 cm	ca. 30 m	1020-113749	
Sintra	Tufted, 1/10" loop pile	100% pure wool	1000 g/m <sup>2</sup>	100% PP	Actionback	2085 g/m <sup>2</sup>	6 mm	ca. 400/500 cm	ca. 30 m	1020-114929	
Sintra Tiles	Tufted, 1/10" loop pile	100% pure wool	1020 g/m <sup>2</sup>	100% PES	Bitumen, covered with PES-fleece	4250 g/m <sup>2</sup>	7,5 mm	ca. 50 cm	ca. 50 cm	1020-117800	
Sydney	Tufted, 1/4" loop pile, 3-ply yarn	100% pure wool	1600 g/m <sup>2</sup>	100% PP	Jute	2800 g/m <sup>2</sup>	10 mm	ca. 400/500 cm	ca. 30 m	1020-113263	
Taiga	Tufted, 5/16" loop pile, 2-ply yarn	100% pure wool	1200 g/m <sup>2</sup>	100% PP	Actionback	2420 g/m <sup>2</sup>	11 mm	ca. 400/500 cm	ca. 30 m	1020-119076	
Tanger	Tufted, 5/32" loop pile	100% pure wool	1000 g/m <sup>2</sup>	100% PP	Actionback + Feltbacking	2050 g/m <sup>2</sup> ActionBac 2250 g/m <sup>2</sup> Felt	6,5 mm ActionBac 7,5 mm Felt	ca. 400/500 cm	ca. 30 m	1020-118429 1020-118950	
Wellington	Tufted, 5/16" loop pile, 3-ply yarn	100% pure wool	1600 g/m <sup>2</sup>	100% PP	Jute	2650 g/m <sup>2</sup>	11 mm	ca. 400/500 cm	ca. 30 m	1020-113752	
Chicago	Flat woven, loop pile	100% pure wool	550 g/m <sup>2</sup>	100% Jute	Jute	1900 g/m <sup>2</sup>	6 mm	ca. 400 cm	ca. 30 m	1020-110217	
Flanders	Flat woven, loop pile	55% Wool + 45% Flax	550 g/m <sup>2</sup> Wool 450 g/m <sup>2</sup> Flax	Wool + Jute	Jute	2450 g/m <sup>2</sup>	6 mm	ca. 400 cm	ca. 30 m	1020-110214	
Miami	Flat woven, loop pile	100% pure wool	750 g/m <sup>2</sup>	100% Jute	Jute	2100 g/m <sup>2</sup>	6 mm	ca. 400 cm	ca. 30 m	1020-114931	
Porto	Flat woven, loop pile	100% pure wool	750 g/m <sup>2</sup>	100% Jute	Jute	2750 g/m <sup>2</sup>	6 mm	ca. 400 cm	ca. 30 m	1020-110219	
Tivoli	Flat woven, loop pile	100% pure wool	700 g/m <sup>2</sup>	100% Jute	Jute	2520 g/m <sup>2</sup>	6 mm	ca. 400 cm	ca. 30 m	1020-110218	
Estrella	Wilton Woven, loop pile	100% pure wool	1200 g/m <sup>2</sup>		Woven	2100 g/m <sup>2</sup>	7,5 mm	ca. 400 cm	ca. 30 m	1020-113655	
Iona	Wilton Woven, loop pile	92% pure wool + 8% Linen	1200 g/m <sup>2</sup>		Woven	2200 g/m <sup>2</sup>	7,5 mm	ca. 400 cm	ca. 30 m	1020-119137	

Alle kwaliteiten en kleuren zijn leverbaar als coupon of karpet op de gewenste lengte.

Toutes les références sont livrables sous forme de coupe ou tapis gansé, jusqu'à la longueur de votre choix.

Rugs or cutlengths can be supplied in any quality or colour up to any length.

Kupon oder Teppich ist lieferbar in jeder Qualität und Farbe, bis zu der gewünschten Länge.

Acclimatisatie: min. 24u & min. 15°C, ONVERPAKT in de ruimte. Kopse naden zijn meestal niet mogelijk. Gebruik ca. 500 g/m<sup>2</sup> polyacryl dispersielijm. Plaats NIET bij opvallende of storende optische fouten. Bouclé kwaliteiten zijn gevoelig voor puntbelasting. Om esthetische redenen is het aangewezen rekening te houden met de richting van de ketting, die zich in de lengte, en de inslag, die zich in de breedte van het weefsel bevindt. Krimpen mogelijk ; 2 % extra bestellen (min. 5 cm) is aangewezen.

Acclimatation : DEBALLE min. 24h & 15°C aux conditions atmosphériques locales. Joints aux abouts ne sont pas possible chez la plupart des qualités. Employez une colle à dispersion polyacrylique (ca. 500 g/m<sup>2</sup>). En cas de gros défauts optiques NE PAS poser le tapis. Des qualités bouclées sont sensibles à charge sur un point. Pour des raisons esthétiques il est recommandé de tenir compte de la largeur de fabrication et de retrouver la chaîne dans la longueur et la trame dans la largeur du tapis. Peut se rétrécir; il est recommandé de commander 2 % extra (5 cm min.)

Acclimatisation: min. 24 h & 15°C UNWRAPPED at the local conditions. Most qualities can not be joined crossed (avoid crosscut seams). Use a polyacrylic glue, ca. 500 g/m<sup>2</sup>. If optical flaws are too striking, DO NOT install the carpet. Bouclé qualities are sensitive to point load. The direction of the weave is important. Please ensure that the weft is in the width and the warp in the length of the rug. Shrinkage is possible; therefore order 2 % extra (min. 5 cm).

Anklimatisierung: mindestens 24 Std. bei 15°C UNVERPACKT vor Ort. Quernähte sind nicht möglich bei den meisten Qualitäten. Verwenden Sie ein Polyacrylleim (ca. 500 g/qm). Bei starken optischen Ungenauigkeiten, den Teppichboden NICHT verlegen. Bouclé Qualitäten sind empfindlich für punktuelle Belastung. Aus optischen Gründen empfehlen wir die Struktur des Teppichbodens (Kette in der Länge und Schuss in der Breite) zu berücksichtigen. Kann schrumpfen ; bestellen Sie dann auch 2 % extra (min. 5 cm).

**ONDERHOUDSINSTRUCTIES / NOTICE D'ENTRETIEN / MAINTENANCE INSTRUCTIONS / PFLEGEANLEITUNG**  
**SISAL / KOKOS, COCOS, COIR, KOKOS / WOL, LAINE, WOLLE, WOOL**

Droge poedershampoo: 2x per jaar / Shampooing en poudre: 2x par an / Powdered shampoo: 2x a year / Pulverisiertes Shampoo: 2x im Jahr.

Probeer vlekken eerst te verwijderen d.m.v. een uitgewrongen doek gedrenkt in water + een sterk verdunde shampoo. / Essayez d'abord d'enlever la tache au moyen d'un chiffon essoré trempé dans le shampooing très dilué dans l'eau. / First, try to remove the stain by using a wrung out cloth that was drenched in shampoo diluted in some water / Versuchen Sie zuerst die Flecken mit einem wasserverdünnten Shampoo zu entfernen.

**VLEKKENOVERZICHT / PLAN ANTI-TACHES / STAIN REMOVAL CHECKLIST / ANLEITUNG ZUR FLECKENTFERNUNG**

<b>Bloed / Sang / Blood / Blut</b>	1	4	3	5
<b>Boter / Beurre / Butter / Butter</b>	6	1	2	3
<b>Braaksel / Vomissement / Vomit / Auswurf</b>	11	7	4	
<b>Chocolade / Chocolat / Chocolate / Schokolade</b>	4	7		
<b>Confituur / Confiture / Jam / Konfitüre</b>	4	7		
<b>Dranken / Boissons / Beverages / Getränke</b>	1	2	3	
<b>Ei / Œuf / Egg / Ei</b>	8	1	2 / 4	
<b>Honig / Miel / Honey / Honig</b>	4	7		
<b>Kaarsvet / Bougie / Candle wax / Kerzenwachs</b>	6	1	2	3
<b>Kauwgum / Chewing-gum / Chewing gum / Kaugummi</b>	10			
<b>Koffie / Café / Coffee / Kaffee</b>	8	1	2 / 4	
<b>Lakverf / Peinture de laque / Lacquer / Lack</b>	9			
<b>Lijm voor tapijten / Colle pour tapis / Carpet glue / Leim für Teppiche</b>	12			
<b>Lippenstift / Rouge à lèvres / Lipstick / Lippenstift</b>	1	3		
<b>Latexverf / Peinture au latex / Latex paint / Latexfarbe</b>	3	1	11	
<b>Modder / Boue / Mud / Dreck</b>	11	7	4	
<b>Nagellak / Vernis à ongles / Nail polish / Nagellack</b>	12			
<b>Rode wijn / Vin rouge / Red wine / Rotwein</b>	13			
<b>Schimmel / Moisissure / Mould / Schimmel</b>	4	7		
<b>Thee / Thé / Tea / Thee</b>	8	1	2 / 4	
<b>Vet / Graisse / Grease / Fett</b>	15	1	2	3

1 = 20 % shampoo / de shampooing / shampoo / Shampoo

2 = 5 % azijn / de vinaigre / vinegar / Essig

3 = 75 % lauw water / de l'eau tiède / lukewarm water / Wasser

4 = 5 % ammoniak / d'ammoniac / ammonia / Ammoniak

5 = nadien deppen met azijn / puis tamponner avec du vinaigre / then dab with vinegar / danach mit Essig abwischen

6 = warm strijkijzer (< 100°C) op een doek / Passer au fer chaud (<100°C) sur un chiffon / a hot iron (< 100°C) on a cloth / Heißes Bügeleisen (< 100°C) auf einem Tuch.

7 = 95 % lauw water / de l'eau tiède / lukewarm water / Lauwarmes Wasser

8 = 75 % koud water / eau froide / cold water / Kaltes Wasser

9 = deppen met white spirit / tamponner au white spirit / dab with white spirit / Tupfen mit Terpentine

10 = speciaal product voor verwijdering (bevriezing) / nettoyant pour chewing-gum (réfrigérant) / Chewing gum remover (freezing agent) / Kaugummi-Entferner (Vereisungsmittel)

11 = na drogen afschrappen en verwijderen / après séchage, gratter et brosser / after drying, scrape off and vacuum / nach Trocknung, abwischen und aufsaugen

12 = deppen met aceton of alcohol / tamponner à l'acétone ou l'alcool / dab with acetone or alcohol / tupfen mit Aceton oder Alkohol

13 = onmiddellijke actie: 50 % azijn + 50 % water / action immédiat: 50 % de vinaigre + 50 % d'eau / immediate action: 50 % vinegar and 50 % water / Sofortes Eingreifen: 50 % Essig + 50 % Wasser

14 = water + alcohol, vervolgens zie Dranken / eau + alcool, puis voir Boissons / water + alcohol; then see Beverages stains / Wasser + Alkohol, danach siehe: Getränke

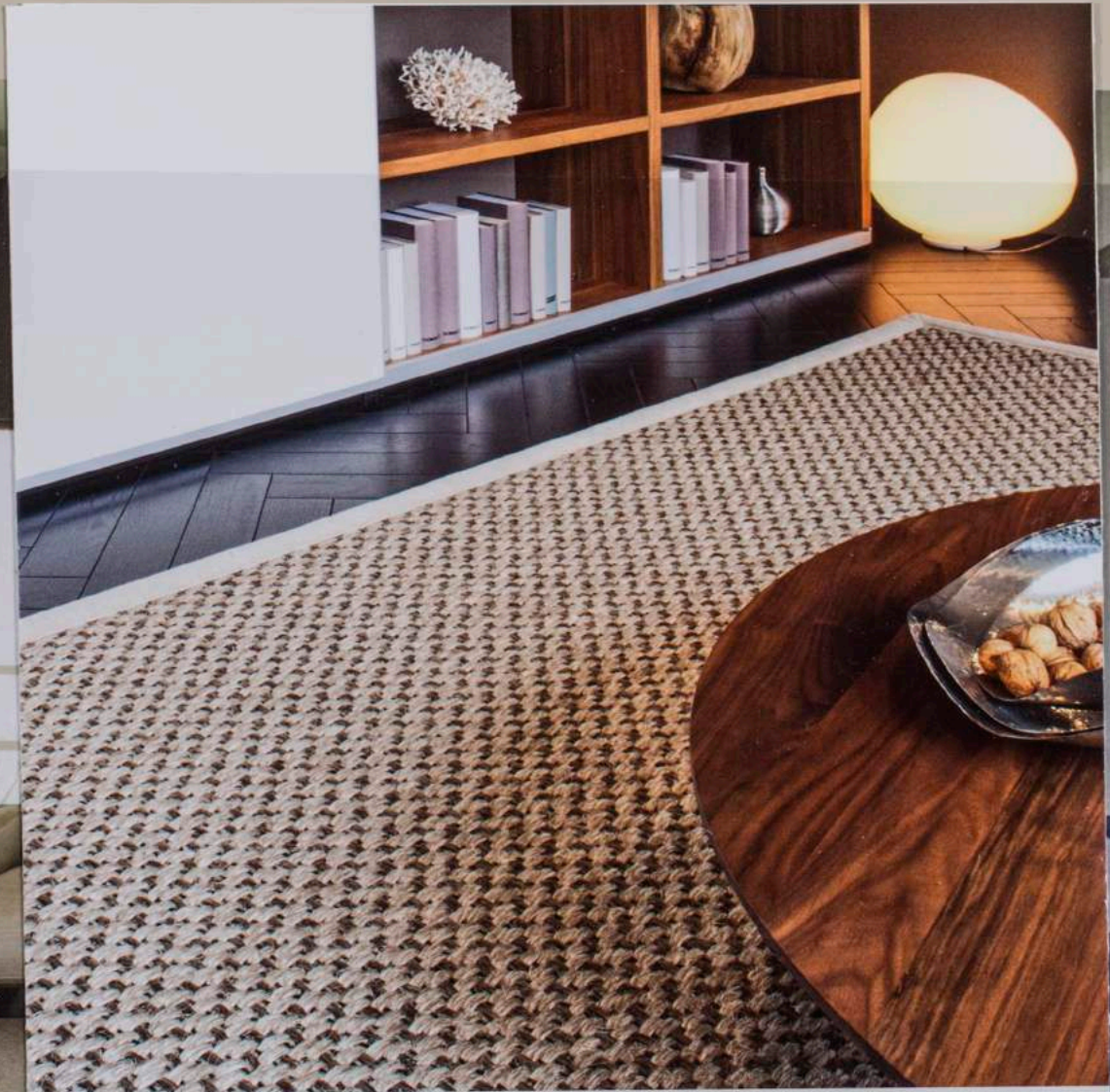
15 = deppen met absorberend papier, vervolgens pure alcohol / tamponner avec du papier absorbent, puis de l'alcool pur (évaporer) / Dab with an absorbing paper, next pour pure alcohol and let it evaporate / Tupfen mit absorbierendem papier; danach purer Alkohol übergießen.

Gedetailleerdere informatie i.v.m. de leg- & onderhoudsvoorschriften : [www.creatuft.be](http://www.creatuft.be)

Information plus détaillée concernant la pose & l'entretien : [www.creatuft.be](http://www.creatuft.be)

More detailed instructions regarding laying & cleaning : [www.creatuft.be](http://www.creatuft.be)

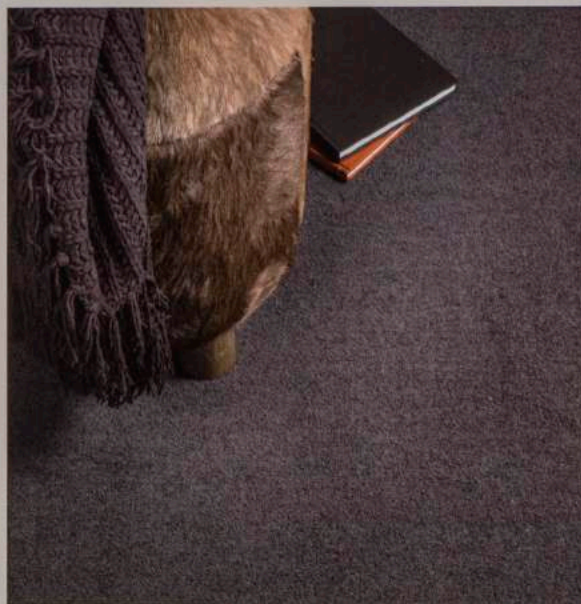
Mehr detaillierte Informationen in Bezug auf Verlegung und Pflege: [www.creatuft.be](http://www.creatuft.be)



Togo Tasibel

Afboordingscollectie  
Collection de bordures  
Border collection  
Bordürenkollektion





 **CREATUFT**  
CREATIVE WOOL FLOORING

[www.creatuft.be](http://www.creatuft.be)