

Sansha[®] SIGNATURE



2012
BALLET & JAZZ ESSENTIALS

Sansha[®] SIGNATURE

Sansha presents **Sansha Signature**, the *unique line*
of classwear designed by dancers for dancers.

Crafted with a soft cotton/Lycra[®] blend that hugs and holds in all the right places,
these *classic styles* create clean lines that
both dancers and instructors will appreciate.

Designed for training programs and conservatories, or simply for those just discovering
their *love of dance*, this collection provides a variety of styles
in a wide range of colors to meet the needs of any dancer.



Sansha SIGNATURE



Sansha SIGNATURE



GIRLS' BALLET LINE

- I. CAMISOLE LEOTARDS.....3
- II. SLEEVELESS LEOTARDS.....4
- III. SHORT SLEEVE LEOTARDS..... 5
- IV. LONG SLEEVE LEOTARDS..... 6
- V. WRAP SWEATERS..... 6
- VI. SKIRTS.....6

BOYS' BALLET LINE

- I. TIGHTS..... 7
- II. LEOTARDS..... 7
- III. TOPS.....8
- IV. SHORTS.....8

BALLET LINE



YOUTH SIZING CHART

GIRLS

SANSHA SIZE	B	C	D	E	F	G	H	I
APPROXIMATE AGE	2-4	4-6	6-8	8-10	10-12	12-14	14-16	16-18

BOYS

SANSHA SIZE	B	C	D	E	F	G	H	I
APPROXIMATE AGE	2-4	4-6	6-8	8-10	10-12	12-14	14-16	16-18



I. CAMISOLE LEOTARDS

GIRLS BALLET LINE

Y1555C

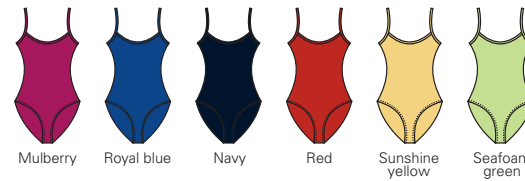
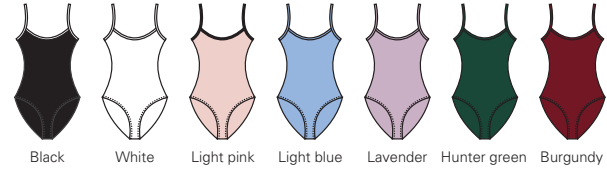
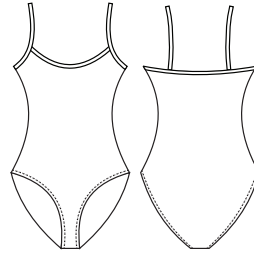
STACIE

Camisole leotard
Full front lining

92% Cotton 8% Lycra®

Sizes: B,C,D,E

Sizes: F,G,H,I



Y1558C

SAVANA

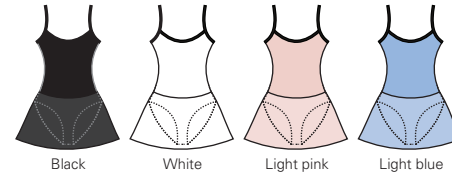
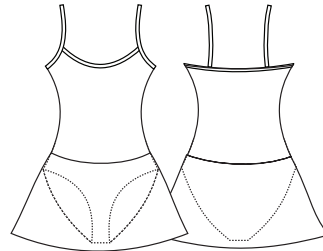
Camisole leotard with attached skirt
Full front lining

92% Cotton 8% Lycra®

Skirt:
96% polyester georgette 4% spandex

Sizes: B,C,D,E

Sizes: F,G,H,I



Y1557C

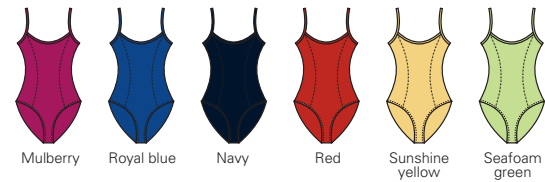
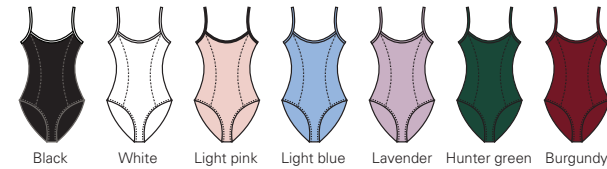
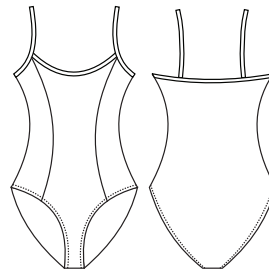
SHAE

Camisole leotard
Two front princess seams
Full front lining

92% Cotton 8% Lycra®

Sizes: B,C,D,E

Sizes: F,G,H,I



Y1559C

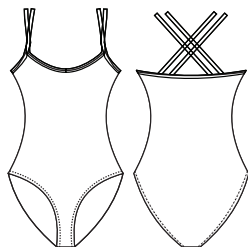
STEFANI

Camisole leotard
Double criss-cross straps, straight back
Full front lining

92% Cotton 8% Lycra®

Sizes: B,C,D,E

Sizes: F,G,H,I



II. SLEEVELESS LEOTARDS

Y2555C

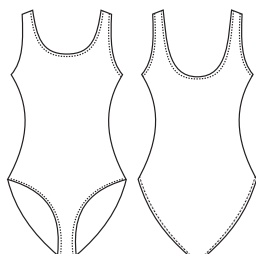
SHANICE

Sleeveless leotard
Full front lining

92% Cotton 8% Lycra®

Sizes: B,C,D,E

Sizes: F,G,H,I



Y2552C

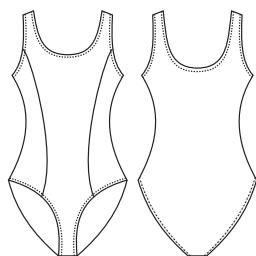
SKYLAR

Sleeveless leotard
Two front princess seams
Full front lining

92% Cotton 8% Lycra®

Sizes: B,C,D,E

Sizes: F,G,H,I



III. SHORT SLEEVE LEOTARDS

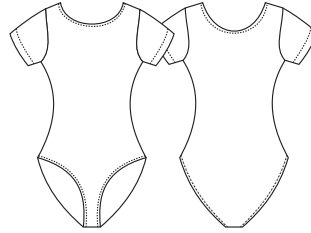
Y3552C

SHAYLEE

Short sleeve leotard
Full front lining

92% Cotton 8% Lycra®

Sizes: B, C, D, E Sizes: F, G, H, I



Black White Light pink Light blue Lavender Hunter green Burgundy



Mulberry Royal blue Navy Red Sunshine yellow Seafoam green

Y3554C

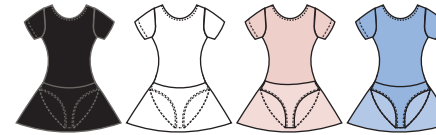
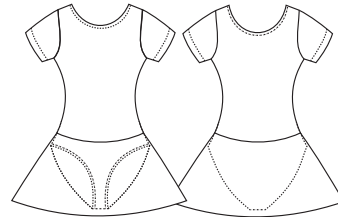
SAMANTHA

Short sleeve leotard with attached skirt
Full front lining

92% Cotton 8% Lycra®

Skirt:
96% polyester georgette 4% spandex

Sizes: B, C, D, E Sizes: F, G, H, I



Black White Light pink Light blue



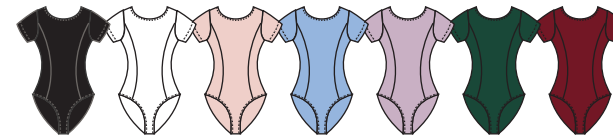
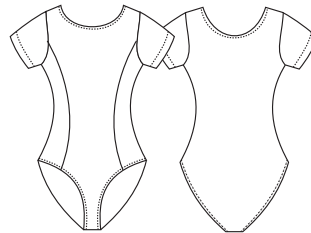
Y3553C

SHARITA

Short sleeve leotard
Two front princess seams
Full front lining

92% Cotton 8% Lycra®

Sizes: B, C, D, E Sizes: F, G, H, I



Black White Light pink Light blue Lavender Hunter green Burgundy



Mulberry Royal blue Navy Red Sunshine yellow Seafoam green

IV. LONG SLEEVE LEOTARDS

Y4552C

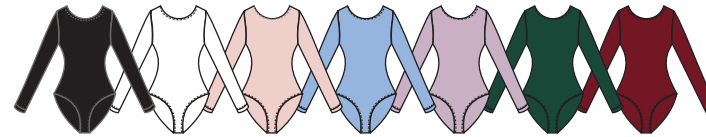
SUZANNA

Long sleeve leotard
Full front lining

92% Cotton 8% Lycra®

Sizes: B,C,D,E

Sizes: F,G,H,I



Black White Light pink Light blue Lavender Hunter green Burgundy



Mulberry Royal blue Navy Red Sunshine yellow Seafoam green

V. WRAP SWEATERS

Y4051C

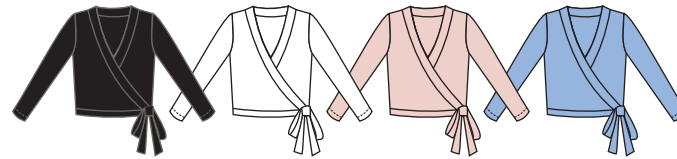
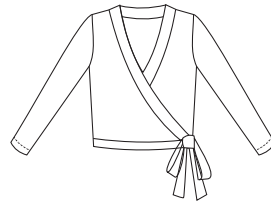
SELAH

Long sleeve wrap sweater

92% Cotton 8% Lycra®

Sizes: B,C,D,E

Sizes: F,G,H,I



Black White Light pink Light blue

VI. SKIRTS

Y0752P

SERENITY

Pull-on skirt, elastic waistband

96% polyester georgette 4% spandex

Sizes: B,C,D,E

Sizes: F,G,H,I



Black White Light pink Light blue Lavender Hunter green Burgundy



Mulberry Royal blue Navy Red Sunshine yellow Seafoam green



I. TIGHTS

BOYS BALLET LINE

Y0151C

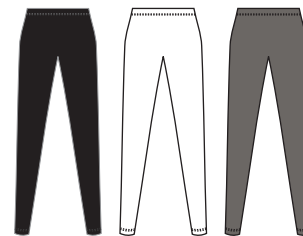
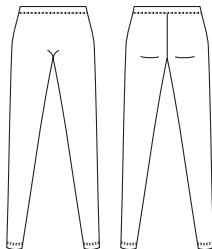
SOREN

Footless tights

92% Cotton 8% Lycra®

Sizes: B,C,D,E

Sizes: F,G,H,I



Black

White

Grey

Y0351C

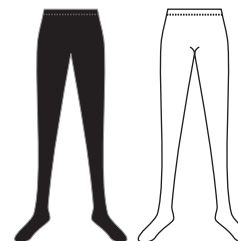
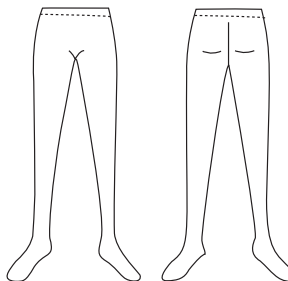
SEAN

Footed tights

92% Cotton 8% Lycra®

Sizes: B,C,D,E

Sizes: F,G,H,I



Black

White

II. LEOTARDS

Y2556C

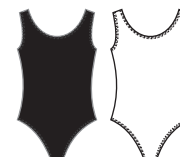
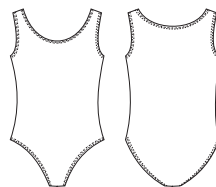
SIMEON

Sleeveless leotard

92% Cotton 8% Lycra®

Sizes: B,C,D,E

Sizes: F,G,H,I



Black

White

Y3555C

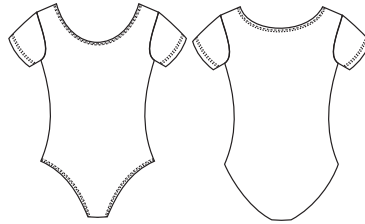
SONNY

Short sleeve leotard

92% Cotton 8% Lycra®

Sizes: B,C,D,E

Sizes: F,G,H,I



Black

White

III. TOPS

Y3051C

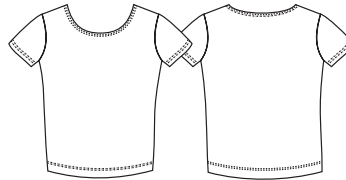
SANTINO

T-shirt

92% Cotton 8% Lycra®

Sizes: B,C,D,E

Sizes: F,G,H,I



Black

White

Grey

VI. SHORTS

Y0651C

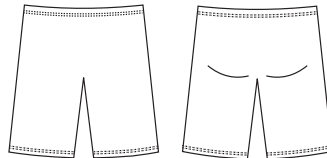
SPENCER

Medium length shorts

92% Cotton 8% Lycra®

Sizes: B,C,D,E

Sizes: F,G,H,I



Black

Grey



JAZZ LINE

GIRLS' JAZZ LINE

- I. TOPS.....10
- II. SHORTS & PANTS.....11

BOYS' JAZZ LINE

- I. TOPS.....13
- II. SHORTS & PANTS..... 14

Sansha[®] SIGNATURE

I. TOPS

GIRLS JAZZ LINE

Y1053C

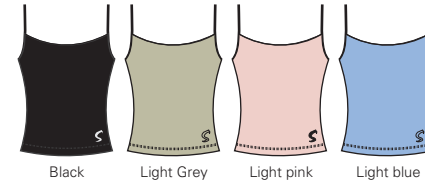
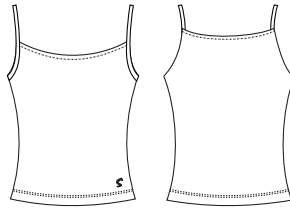
JOSEFINA

Camisole top
Tone-on-tone embroidery

92% Cotton 8% Lycra®

Sizes: B,C,D,E

Sizes: F,G,H,I



Y2055C

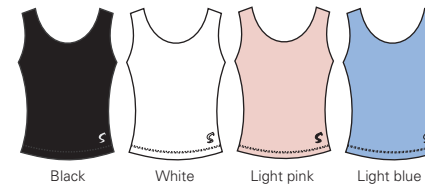
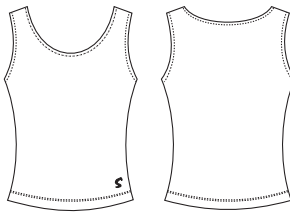
JENILEE

Tank top
Tone-on-tone embroidery

92% Cotton 8% Lycra®

Sizes: B,C,D,E

Sizes: F,G,H,I



Y3052C

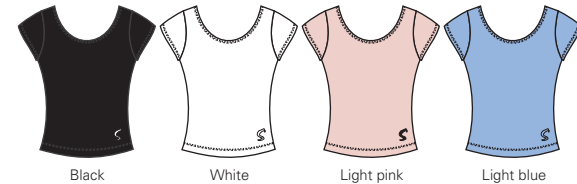
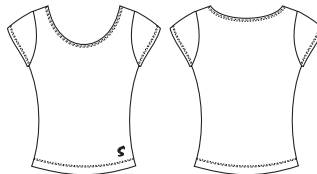
JANIE

Cap sleeve top
Tone-on-tone embroidery

92% Cotton 8% Lycra®

Sizes: B,C,D,E

Sizes: F,G,H,I



II. SHORTS & PANTS

Y0655C

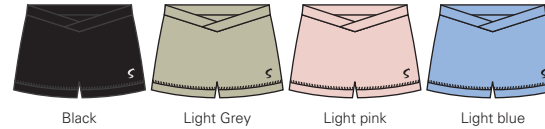
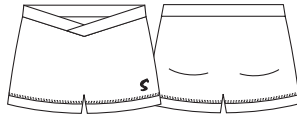
JOANIE

Shorts with V-waist
Tone-on-tone embroidery

92% Cotton 8% Lycra®

Sizes: B, C, D, E

Sizes: F, G, H, I



Black

Light Grey

Light pink

Light blue

Y0451C

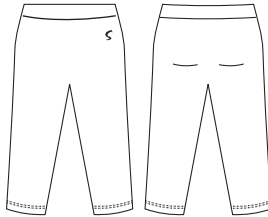
JENNIE

Leggings, below the knee
Tone-on-tone embroidery

92% Cotton 8% Lycra®

Sizes: B, C, D, E

Sizes: F, G, H, I



Black

Light Grey

Light pink

Y0158C

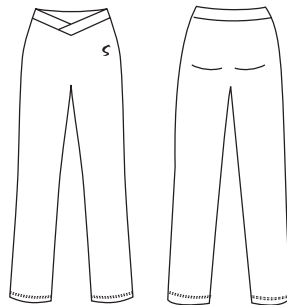
JAYA

Long pants with V-waist
Tone-on-tone embroidery

92% Cotton 8% Lycra®

Sizes: B, C, D, E

Sizes: F, G, H, I



Black

Y0161C

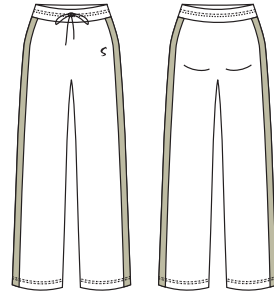
JOLENE

Long pants with drawstring,
wide leg with side stripe
Tone-on-tone embroidery

92% Cotton 8% Lycra®

Sizes: B,C,D,E

Sizes: F,G,H,I



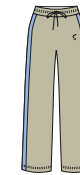
Black/Black



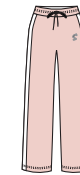
Black/White



Light grey/Light pink



Light grey/Light blue



Light pink/White

Y0453C

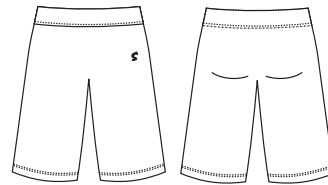
JUNE

Wide leg capri pants
Tone-on-tone embroidery

92% Cotton 8% Lycra®

Sizes: B,C,D,E

Sizes: F,G,H,I



Black



Light pink

I. TOPS

BOYS JAZZ LINE

Y2052C

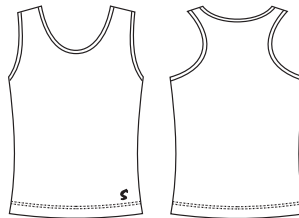
JAMIE

Fitted tank top, oval front, racer back
Tone-on-tone embroidery

92% Cotton 8% Lycra®

Sizes: B,C,D,E

Sizes: F,G,H,I



Black

Grey

Y2053C

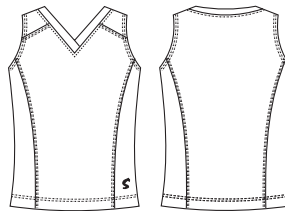
JUSTIN

Fitted sleeveless top, V-neck, side seams
Tone-on-tone embroidery

92% Cotton 8% Lycra®

Sizes: B,C,D,E

Sizes: F,G,H,I



Black



White



Grey

II. SHORTS & PANTS

Y0153C

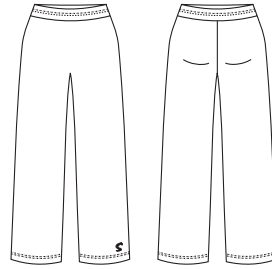
JAYDEN

Long pants, wide leg
Tone-on-tone embroidery

92% Cotton 8% Lycra®

Sizes: B,C,D,E

Sizes: F,G,H,I



Black

Grey

Y0653C

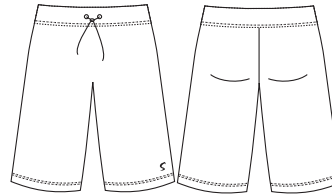
JOSHUA

Loose knee length shorts
with drawstring
Tone-on-tone embroidery

92% Cotton 8% Lycra®

Sizes: B,C,D,E

Sizes: F,G,H,I



Black



Grey



BALLET LINE

Sansha SIGNATURE

LADIES' BALLET LINE

I.	CAMISOLE LEOTARDS.....	16
II.	SLEEVELESS LEOTARDS.....	18
III.	CAP SLEEVE and SHORT SLEEVE LEOTARDS.....	19
IV.	LONG SLEEVE and 3/4 SLEEVE LEOTARDS.....	20
V.	SKIRTS.....	21
VI.	BIKETARDS.....	21
VII.	UNITARDS.....	22
VIII.	WARM-UPS.....	23

I. CAMISOLE LEOTARDS

LADIES' BALLET LINE

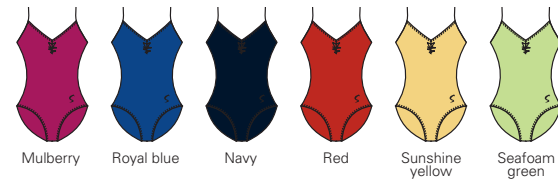
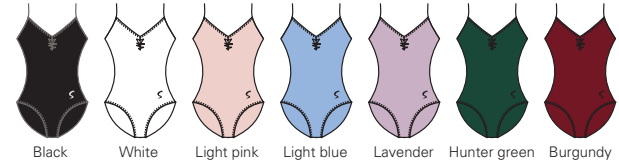
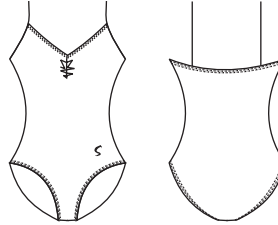
L1551C

SHANA

Camisole leotard
Pre-pinched front, slightly rounded medium back
Bra lining
Tone-on-tone embroidery

92% Cotton 8% Lycra®

Sizes: 2-6



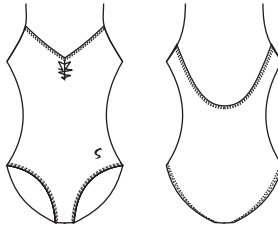
L1552C

SAMARA

Camisole leotard
Pre-pinched front, medium round back
Bra lining
Tone-on-tone embroidery

92% Cotton 8% Lycra®

Sizes: 2-6



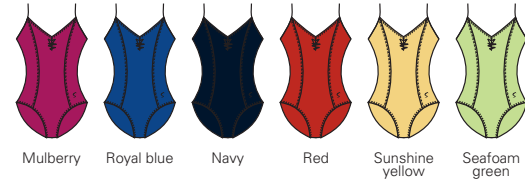
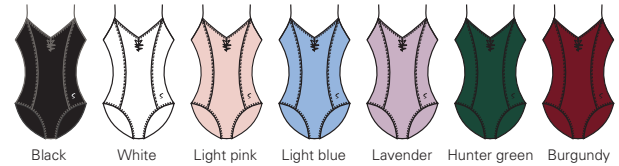
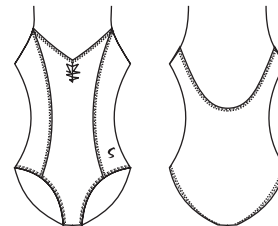
L1553C

SALLY

Camisole leotard
Pre-pinched front, medium round back,
two front princess seams
Bra lining
Tone-on-tone embroidery

92% Cotton 8% Lycra®

Sizes: 2-6



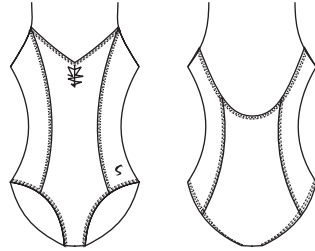
L1554C

SASHA

Camisole leotard
Pre-pinched front, medium round back,
two front and two back princess seams
Bra lining
Tone-on-tone embroidery

92% Cotton 8% Lycra®

Sizes: 2-6



Black Royal blue Navy Hunter green Burgundy

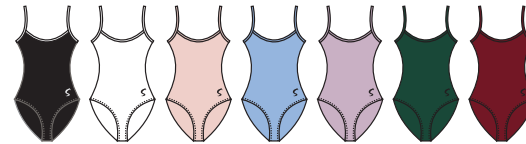
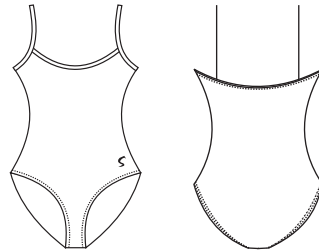
L1555C

SHARI

Camisole leotard
No pinch, slightly rounded front,
slightly rounded medium back
Bra lining
Tone-on-tone embroidery

92% Cotton 8% Lycra®

Sizes: 2-6



Black White Light pink Light blue Lavender Hunter green Burgundy



Mulberry Royal blue Navy Red Sunshine yellow Seafoam green

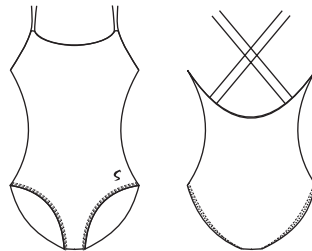
L1556C

SCARLET

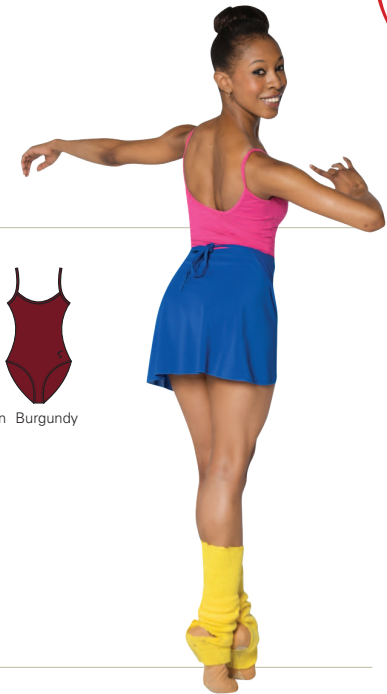
Camisole leotard
No pinch, slightly rounded front,
medium round back, double criss-cross straps
Bra lining
Tone-on-tone embroidery

92% Cotton 8% Lycra®

Sizes: 2-6



Black Royal blue Navy Hunter green Burgundy



II. SLEEVELESS LEOTARDS

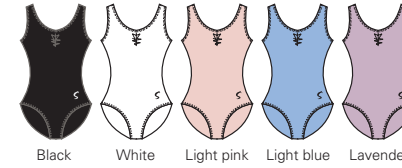
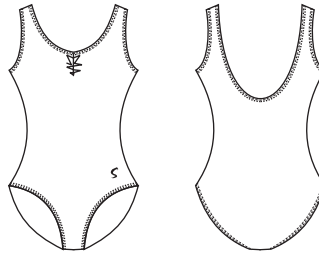
L2551C

SAHARA

Sleeveless leotard
Pre-pinched front, medium round back
Bra lining
Tone-on-tone embroidery

92% Cotton 8% Lycra®

Sizes: 2-6



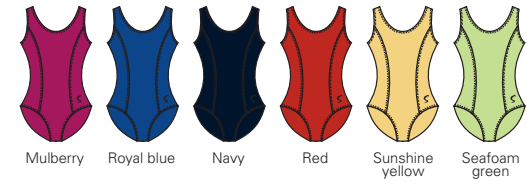
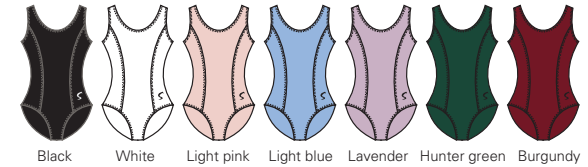
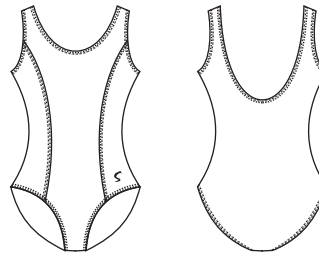
L2552C

SANDY

Sleeveless leotard
No pinch, medium round back,
two front princess seams
Bra lining
Tone-on-tone embroidery

92% Cotton 8% Lycra®

Sizes: 2-6



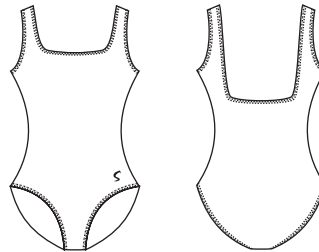
L2553C

SARINA

Sleeveless leotard
No pinch, square front, medium square back
Bra lining
Tone-on-tone embroidery

92% Cotton 8% Lycra®

Sizes: 2-6



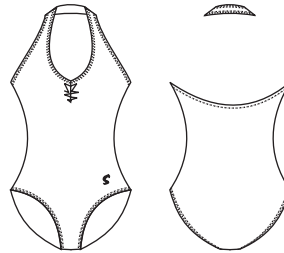
L2554C

SHANNEN

Sleeveless leotard
Pre-pinched halter top, medium round back
Bra lining
Tone-on-tone embroidery

92% Cotton 8% Lycra®

Sizes: 2-6



III. CAP SLEEVE & SHORT SLEEVE LEOTARDS

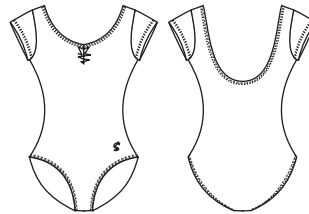
L3551C

SHIRLEY

Cap sleeve leotard
Pre-pinched front, medium round back
Bra lining
Tone-on-tone embroidery

92% Cotton 8% Lycra®

Sizes: 2-6



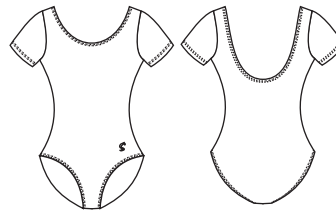
L3552C

SIERRA

Short sleeve leotard
No pinch scoop front, medium round back
Bra lining
Tone-on-tone embroidery

92% Cotton 8% Lycra®

Sizes: 2-6



IV. LONG SLEEVE & 3/4 SLEEVE LEOTARDS

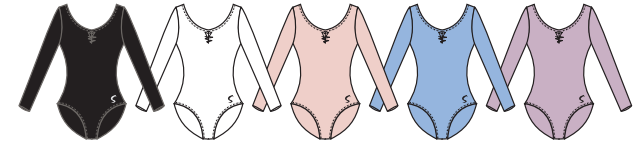
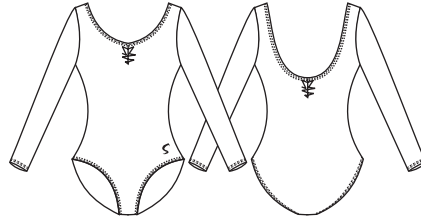
L4551C

SIMONE

Long sleeve leotard
Pre-pinched front,
pre-pinched medium round back
Bra lining
Tone-on-tone embroidery

92% Cotton 8% Lycra®

Sizes: 2-6



Black White Light pink Light blue Lavender



Hunter green Burgundy Mulberry Royal blue Navy

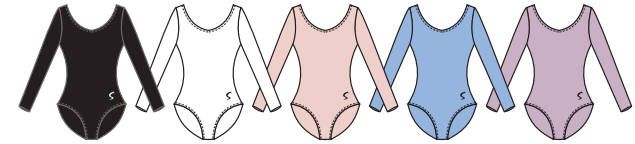
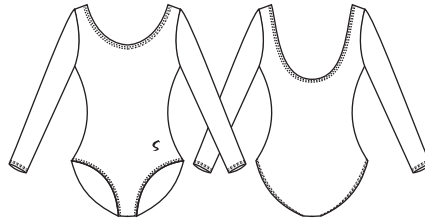
L4552C

SHERIDAN

Long sleeve leotard
No pinches,
scoop front, medium round back
Bra lining
Tone-on-tone embroidery

92% Cotton 8% Lycra®

Sizes: 2-6



Black White Light pink Light blue Lavender



Hunter green Burgundy Mulberry Royal blue Navy

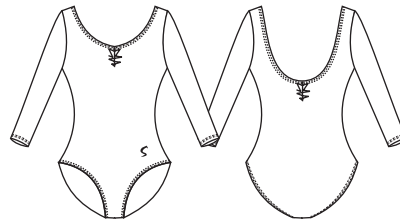
L4553C

SOFIA

3/4 sleeve leotard
Pre-pinched front,
pre-pinched medium round back
Bra lining
Tone-on-tone embroidery

92% Cotton 8% Lycra®

Sizes: 2-6



Black Hunter green Burgundy Royal blue Navy

V. SKIRTS

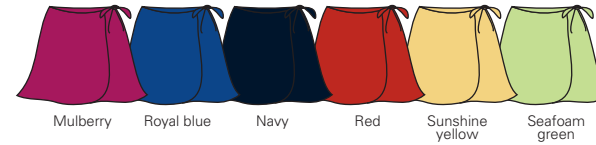
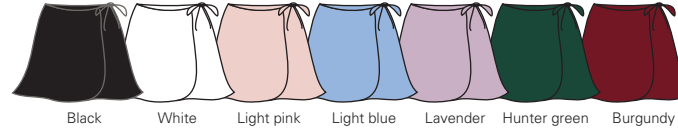
L0751P

SKYE

Wrap skirt

96% polyester georgette 4% spandex

Sizes: 2-6



VI. BIKETARDS

L2651C

STEVIE

Sleeveless biketard

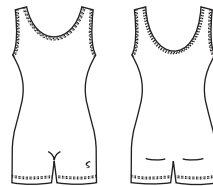
Mid-thigh length

Bra lining

Tone-on-tone embroidery

92% Cotton 8% Lycra®

Sizes: 2-6



L7651C

SUE

Halter top biketard

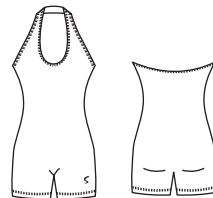
Medium straight back, upper-thigh length

Bra lining

Tone-on-tone embroidery

92% Cotton 8% Lycra®

Sizes: 2-6



VII. UNITARDS

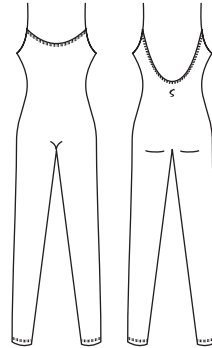
L1151C

SYLVIA

Camisole unitard
Round front, low round back
Bra lining
Tone-on-tone embroidery

92% Cotton 8% Lycra®

Sizes: 2-6



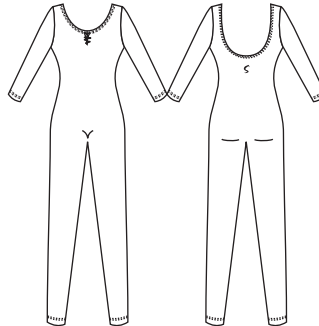
L4151C

STELLA

3/4 sleeve unitard
Pre-pinched front, low round back
Bra lining
Tone-on-tone embroidery

92% Cotton 8% Lycra®

Sizes: 2-6



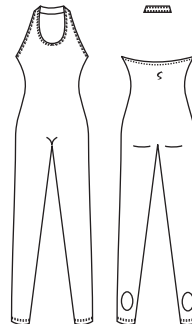
L7151C

STARLA

Halter top unitard with stirrups
Medium back
Bra lining
Tone-on-tone embroidery

92% Cotton 8% Lycra®

Sizes: 2-6



VIII. WARM-UPS

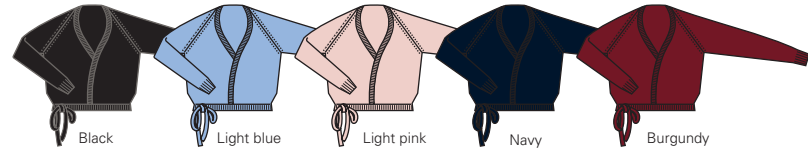
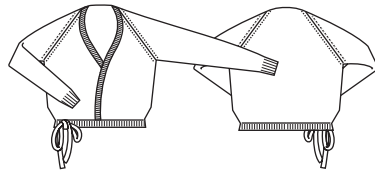
L4053A

KENDAL

Wrap sweater

57% Cotton 29% Acrylic
11% Nylon 3% Spandex

Sizes: 2/3, 3/4, 5/6



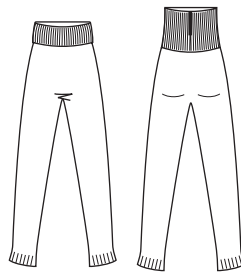
L0162A

KIRA

Fold-over tights

57% Cotton 29% Acrylic
11% Nylon 3% Spandex

Sizes: 2/3, 3/4, 5/6



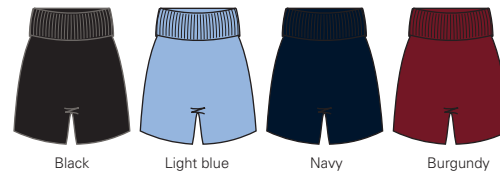
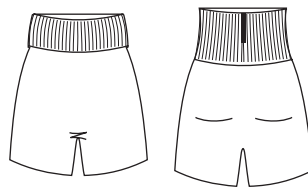
L0656A

KYRIE

Fold-over shorts

57% Cotton 29% Acrylic
11% Nylon 3% Spandex

Sizes: 2/3, 3/4, 5/6



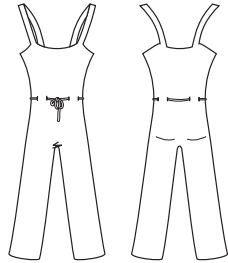
L1153A

KIANA

Unitard with drawstring waist

57% Cotton 29% Acrylic
11% Nylon 3% Spandex

Sizes: 2/3, 3/4, 5/6



Black Navy Burgundy



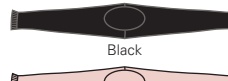
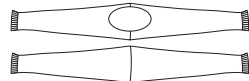
L4054A

KASEY

Shoulder warmer

57% Cotton 29% Acrylic
11% Nylon 3% Spandex

One size



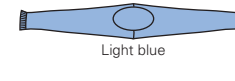
Black

Light pink



Navy

Burgundy



Light blue

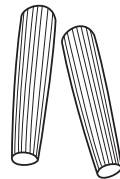
L0001A

KAYA

Ankle warmer

57% Cotton 29% Acrylic
11% Nylon 3% Spandex

17 inches



Black Navy Light pink

Burgundy Light blue

LOBELIA

Leg warmer

57% Cotton 29% Acrylic
11% Nylon 3% Spandex

KT006 51 cm
KT007 57 cm



Black Navy Passion purple Light blue
Ochid bloom Pink Hot pink Paradise gren



Mellow yellow Buttercup yellow White

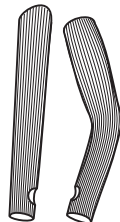
L0002A

KALISTA

Stirrup leg warmer

Cotton/Acrylic/Nylon/Spandex

28 inches



Black Navy Light pink

Burgundy Light blue



BALLET LINE



Sansha SIGNATURE

MEN'S BALLET LINE

I. TIGHTS.....	26
II. WARM-UPS.....	27
III. LEOTARDS.....	28
IV. UNITARDS.....	29
V. BIKETARDS.....	29
VI. TOPS.....	30
VII.SHORTS.....	30



I. TIGHTS

MEN'S BALLET LINE

H0151C

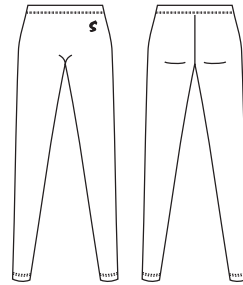
SAMUEL

Footless tights
Tone-on-tone embroidery

92% Cotton 8% Lycra®



Sizes: 2-6
COTTON

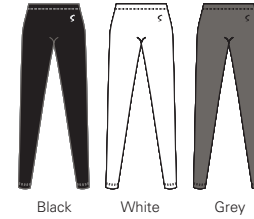


H0151SN / H0151MN*

SAMUEL

Footless tights
Tone-on-tone embroidery

82% Nylon 18% Spandex



Sizes: 2-6
NYLON

H0152C

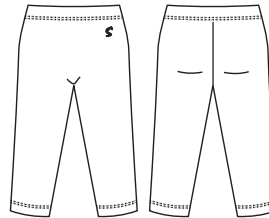
SANTIAGO

Below-the-knee tights 250g/m²
Tone-on-tone embroidery

92% Cotton 8% Lycra®



Sizes: 2-6
COTTON



H0152SN / H0152MN*

SANTIAGO

Below-the-knee tights
Tone-on-tone embroidery

82% Nylon 18% Spandex



Sizes: 2-6
NYLON

H0251C

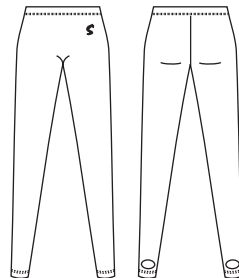
SAWYER

Stirrup tights
Tone-on-tone embroidery

92% Cotton 8% Lycra®



Sizes: 2-6
COTTON

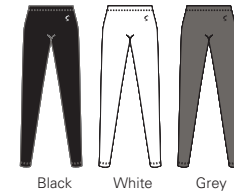


H0251SN / H0251MN*

SAWYER

Stirrup tights
Tone-on-tone embroidery

82% Nylon 18% Spandex



Sizes: 2-6
NYLON

* SN= Shiny nylon, MN= Matte nylon

H0351C

SCOTT

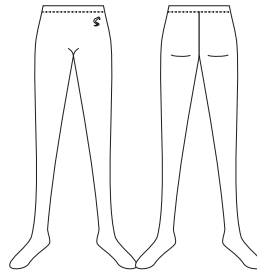
Footed tights
Tone-on-tone embroidery

92% Cotton 8% Lycra®



Black White Grey

Sizes: 2-6
COTTON



H0351SN / H0351MN*

SCOTT

Footed tights
Tone-on-tone embroidery

82% Nylon 18% Spandex



Black White Grey

Sizes: 2-6
NYLON

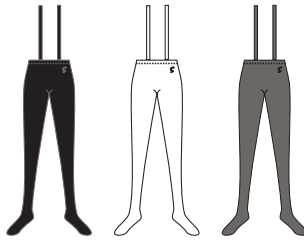


H0352C

SANTOS

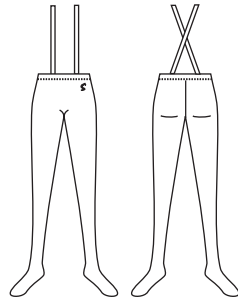
Footed tights with criss-cross straps
Tone-on-tone embroidery

92% Cotton 8% Lycra®



Black White Grey

Sizes: 2-6
COTTON

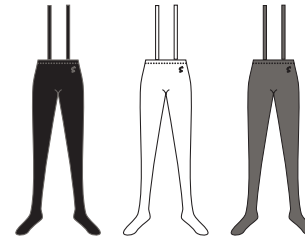


H0352SN / H0352MN*

SANTOS

Footed tights with criss-cross straps
Tone-on-tone embroidery

82% Nylon 18% Spandex



Black White Grey

Sizes: 2-6
NYLON

* SN= Shiny nylon, MN= Matte nylon

II. WARM-UPS

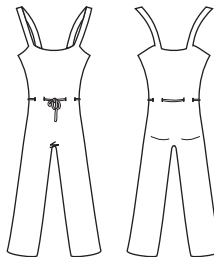
H1154A

KOBE

Unitard with drawstring waist

57% Cotton 29% Acrylic
11% Nylon 3% Spandex

Sizes: 2/3, 3/4, 5/6



Black Navy

III. LEOTARDS

H2556C

SETH

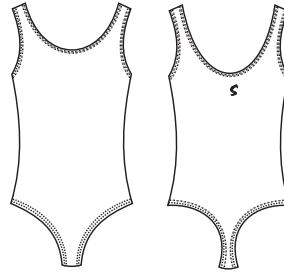
Sleeveless tank leotard
Tone-on-tone embroidery

92% Cotton 8% Lycra®



Black White Grey Navy Chocolate

Sizes: 2-6
COTTON



H2556SN / H2556MN*

SETH

Sleeveless tank leotard
Tone-on-tone embroidery

82% Nylon 18% Spandex



Black White Grey

Sizes: 2-6
NYLON

H3555C

SERGIO

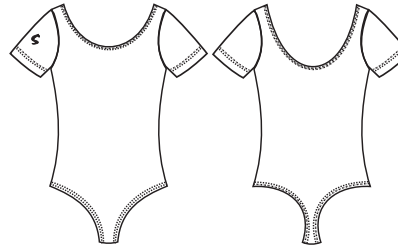
Short sleeve leotard
Tone-on-tone embroidery

92% Cotton 8% Lycra®



Black White Grey Navy Chocolate

Sizes: 2-6
COTTON



H3555SN / H3555MN*

SERGIO

Short sleeve leotard
Tone-on-tone embroidery

82% Nylon 18% Spandex



Black White Grey

Sizes: 2-6
NYLON

H4554C

SEBASTIAN

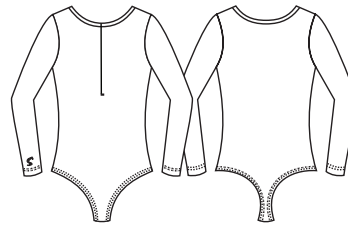
Long sleeve leotard with front zipper
Tone-on-tone embroidery

92% Cotton 8% Lycra®



Black

Sizes: 2-6
COTTON



H4554SN / H4554MN*

SEBASTIAN

Long sleeve leotard with front zipper
Tone-on-tone embroidery

82% Nylon 18% Spandex



Black

Sizes: 2-6
NYLON

* SN= Shiny nylon, MN= Matte nylon

IV. UNITARDS

H2151C

SHELTON

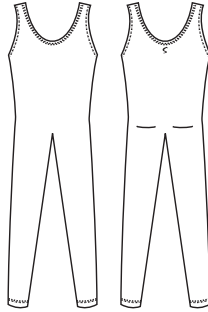
Tank unitard
Tone-on-tone embroidery

92% Cotton 8% Lycra®



Black White Grey Navy

Sizes: 2-6
COTTON



H2151SN / H2151MN*

SHELTON

Tank unitard
Tone-on-tone embroidery

82% Nylon 18% Spandex



Black White Grey Navy

Sizes: 2-6
NYLON



H3151C

SHANE

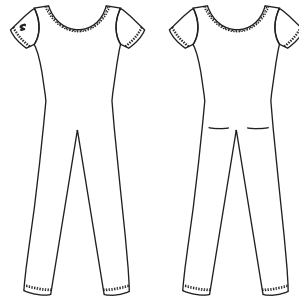
Short sleeve leotard, round front and back
Tone-on-tone embroidery

92% Cotton 8% Lycra®



Black Grey Navy

Sizes: 2-6
COTTON



H3151SN / H3151MN*

SHANE

Short sleeve leotard, round front and back
Tone-on-tone embroidery

82% Nylon 18% Spandex



Black Grey Navy

Sizes: 2-6
NYLON

V. BIKETARDS

H2652C

SILAS

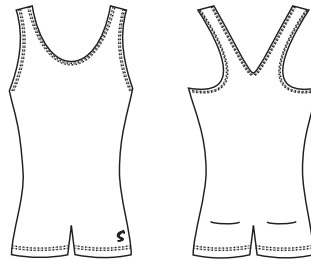
Biketard, round front, racer back
Tone-on-tone embroidery

92% Cotton 8% Lycra®



Black Grey Navy

Sizes: 2-6
COTTON



H2652SN / H2652MN*

SILAS

Biketard, round front, racer back
Tone-on-tone embroidery

82% Nylon 18% Spandex



Black Grey Navy

Sizes: 2-6
NYLON

VI. TOPS

H2051C

STEFAN

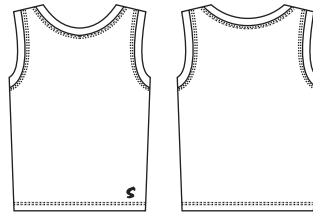
Sleeveless top, round front and back
Tone-on-tone embroidery

92% Cotton 8% Lycra®



Black White Grey Navy

Sizes: 2-6
COTTON



H2051SN / H2051MN*

STEFAN

Sleeveless top, round front and back
Tone-on-tone embroidery

82% Nylon 18% Spandex



Black White

Sizes: 2-6
NYLON

H3051C

STUART

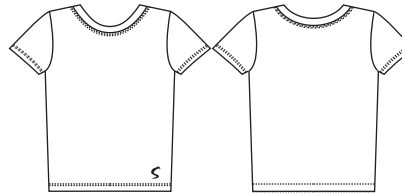
T-shirt
Tone-on-tone embroidery

92% Cotton 8% Lycra®



Black White Grey Navy

Sizes: 2-6
COTTON



H3051SN / H3051MN*

STUART

T-shirt
Tone-on-tone embroidery

82% Nylon 18% Spandex



Black White

Sizes: 2-6
NYLON

II. SHORTS

H0651C

SALVADOR

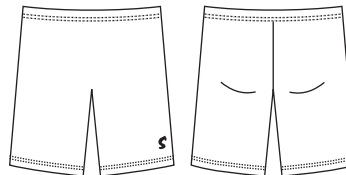
Medium length shorts
Tone-on-tone embroidery

92% Cotton 8% Lycra®



Black

Sizes: 2-6
COTTON



H0651SN / H0651MN*

SALVADOR

Medium length shorts
Tone-on-tone embroidery

82% Nylon 18% Spandex



Black

Sizes: 2-6
NYLON

* SN= Shiny nylon, MN= Matte nylon



LADIES' JAZZ LINE

- I. TOPS.....32
- II. SHORTS & PANTS.....34
- III. UNITARDS.....37

JAZZ LINE

Sansha SIGNATURE

I. TOPS

LADIES' JAZZ LINE

L1051C

JOY

Camisole bra top, criss-cross straps
Bra lining
Tone-on-tone embroidery

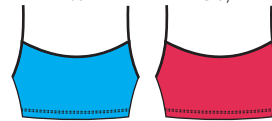
92% Cotton 8% Lycra®

Sizes: 2-6



Black

Grey



Bright blue

Hot pink

L2054C

JOSIE

Tank bra top, racer back
Bra lining
Tone-on-tone embroidery

92% Cotton 8% Lycra®

Sizes: 2-6



Black

Grey

Navy



Burgundy

Chocolate

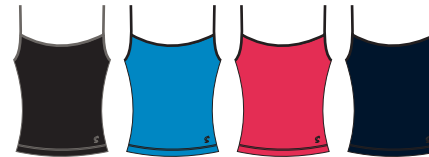
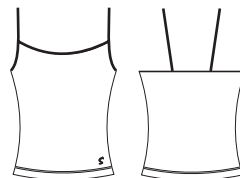
L1052C

JUDITH

Camisole top
Bra lining
Tone-on-tone embroidery

92% Cotton 8% Lycra®

Sizes: 2-6



Black

Bright blue

Hot pink

Navy



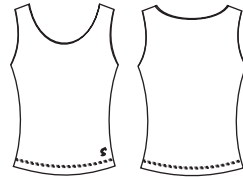
L2055C

JUSTINE

Tank top
Bra lining
Tone-on-tone embroidery

92% Cotton 8% Lycra®

Sizes: 2-6



Black Navy Burgundy



Chocolate Khaki

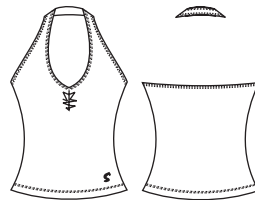
L7051C

JULIANNNA

Halter top, pre-pinched front
Bra lining
Tone-on-tone embroidery

92% Cotton 8% Lycra®

Sizes: 2-6



Black Bright blue Hot pink



Burgundy Chocolate

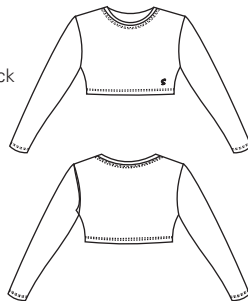
L4052C

JESSICA

Long sleeve crop top, round front and back
Bra lining
Tone-on-tone embroidery

92% Cotton 8% Lycra®

Sizes: 2-6



Black



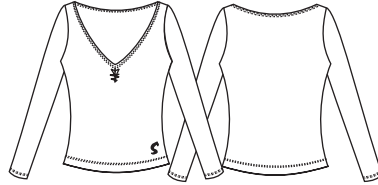
L4053C

JILLIAN

Long sleeve top, pre-pinched front
Tone-on-tone embroidery

92% Cotton 8% Lycra®

Sizes: 2-6



Black

II. SHORTS & PANTS

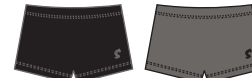
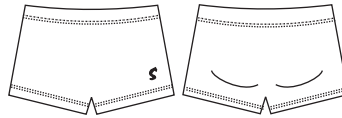
L0654C

JODIE

Shorts
Tone-on-tone embroidery

92% Cotton 8% Lycra®

Sizes: 2-6



Black

Grey

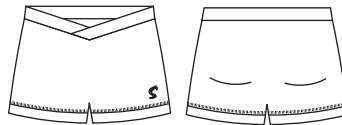
L0655C

JEWEL

Shorts with V-waist
Tone-on-tone embroidery

92% Cotton 8% Lycra®

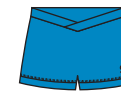
Sizes: 2-6



Black



Grey



Bright blue



Hot pink



Burgundy



Chocolate



Khaki



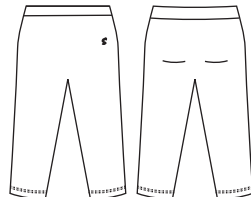
L0451C

JASMIN

Leggings, below the knee
Tone-on-tone embroidery

92% Cotton 8% Lycra®

Sizes: 2-6



Black

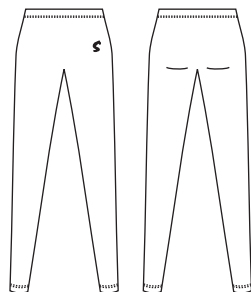
L0156C

JOCELYN

Long leggings
Tone-on-tone embroidery

92% Cotton 8% Lycra®

Sizes: 2-6



Black

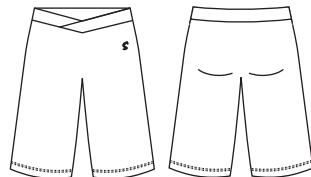
L0452C

JULIET

Capri pants with V-waist
Tone-on-tone embroidery

92% Cotton 8% Lycra®

Sizes: 2-6



Black



Grey



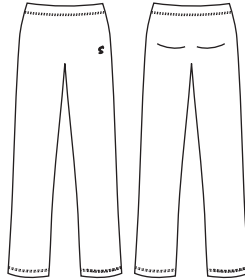
L0157C

JUNE

Long pants, straight leg
Tone-on-tone embroidery

92% Cotton 8% Lycra®

Sizes: 2-6



Black

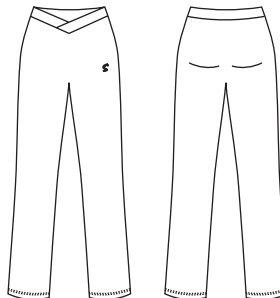
L0158C

JADE

Long pants with V-waist, straight leg
Tone-on-tone embroidery

92% Cotton 8% Lycra®

Sizes: 2-6



Black

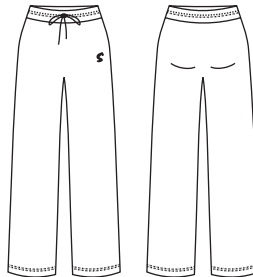
L0159C

JAELYN

Long pants with drawstring, wide leg
Tone-on-tone embroidery

92% Cotton 8% Lycra®

Sizes: 2-6



Black



Grey



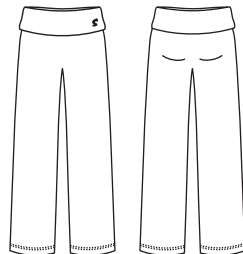
L0160C

JEMMA

Long pants with fold-over waist, wide leg
Tone-on-tone embroidery

92% Cotton 8% Lycra®

Sizes: 2-6



Black

III. UNITARDS

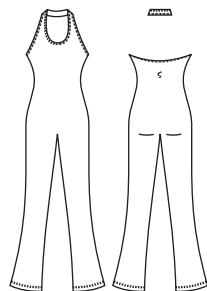
L7152C

JAQUELINE

Halter unitard with collar, flared leg
Tone-on-tone embroidery

Sizes: 2-6

92% Cotton 8% Lycra®



Black

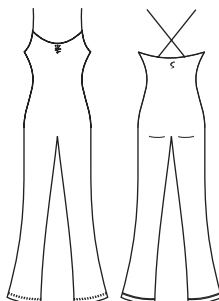
L1152C

JORDANNA

Camisole unitard, pre-pinned,
Criss-cross back, flared leg
Tone-on-tone embroidery

92% Cotton 8% Lycra®

Sizes: 2-6



Black





JAZZ LINE



MEN'S JAZZ LINE

- I. TOPS.....40
- II. SHORTS & PANTS....40

Sansha SIGNATURE

I. TOPS

MEN'S JAZZ LINE

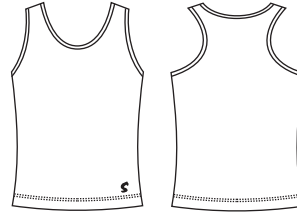
H2052C

JAMES

Fitted tank top, oval front, racer back
Tone-on-tone embroidery

92% Cotton 8% Lycra®

Sizes: 2-6



Black

White

Grey



Navy

Khaki

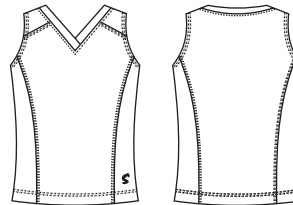
H2053C

JASON

Fitted sleeveless top, V-neck, side seams
Tone-on-tone embroidery

92% Cotton 8% Lycra®

Sizes: 2-6



Black

White

Grey



Navy

Khaki

II. SHORTS & PANTS

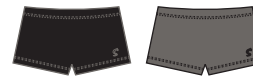
H0652C

JOEL

Shorts
Tone-on-tone embroidery

92% Cotton 8% Lycra®

Sizes: 2-6



Black

Grey



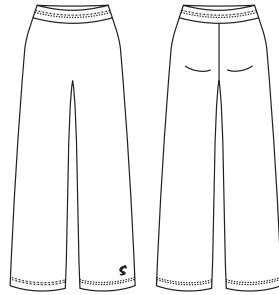
H0153C

JULIAN

Long pants, wide leg
Tone-on-tone embroidery

92% Cotton 8% Lycra®

Sizes: 2-6



Black

Grey

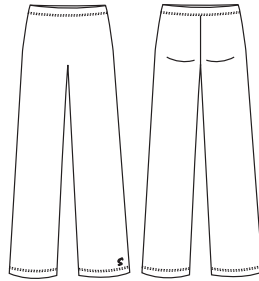
H0154C

JENSEN

Long pants, straight leg
Tone-on-tone embroidery

92% Cotton 8% Lycra®

Sizes: 2-6



Black

Grey

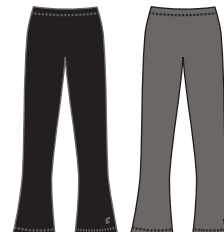
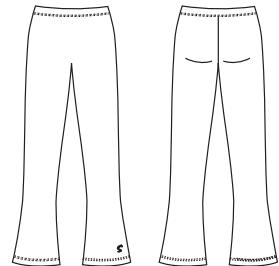
H0155C

JONAS

Fitted long pants, flared leg
Tone-on-tone embroidery

92% Cotton 8% Lycra®

Sizes: 2-6



Black

Grey



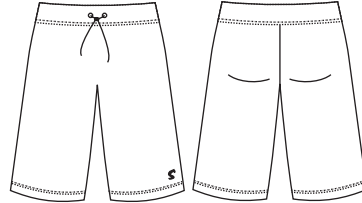
H0653C

JORDAN

Loose knee length shorts with drawstring
Tone-on-tone embroidery

92% Cotton 8% Lycra®

Sizes: 2-6



Black

Grey

SIZING CHART

LADIES

SANSHA SIZE	2	3	4	5	6
APPROXIMATE EQUIVALENT	XS	S	M	L	XL

MEN

SANSHA SIZE	2	3	4	5	6
APPROXIMATE EQUIVALENT	XS	S	M	L	XL



Manufacturer's Pledge

Sansha, like most major garment and footwear brands, manufactures in several countries in the world.

In all our production units, we have enforced three elementary norms:

- Minimum age of labor: over 18 years-old
- 40-hour work week, with overtime paid extra
- Staff representative unions elected in all units of over 50 employees

All independent organizations can contact me for verification or with any questions.

Franck Raoul-Duval
CEO, Sansha

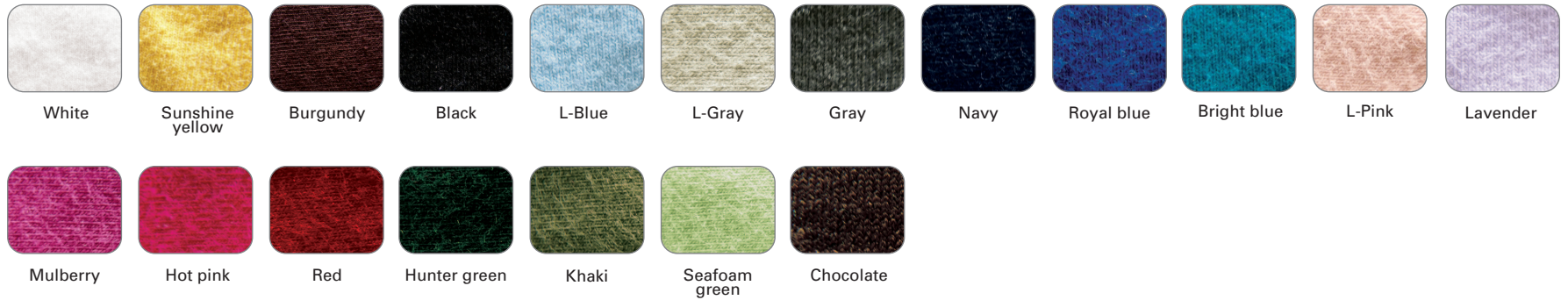
Sansha would like to thank the following dancers and photographers who participated in the creation of this catalog.

Dancers: Anna Mátraházi, Lili Mátraházi, Judit Varga, Jaren Dzhaner, Alexandra Meshherjakova, Yulia Nevdoshenko, Alice Topp, Glynn Scott, Da'von Doane, Leyland Simmons, Natalia Johnson, Emily Wagner, Whitney Brown, Jehbeal Muhammad - Ballet Noirs New York.

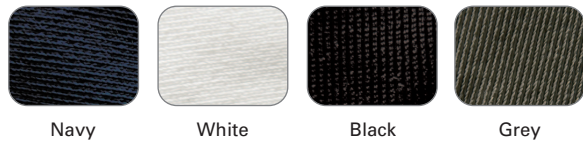
Photographers: Andrea Paolini Merlo, Jeff Busby, Jaqlin Medlock, Yulia Voynich

FABRICS

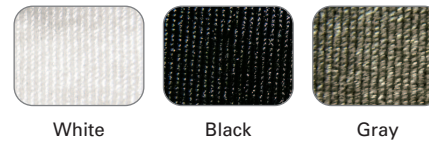
92% Cotton + 8% Lycra



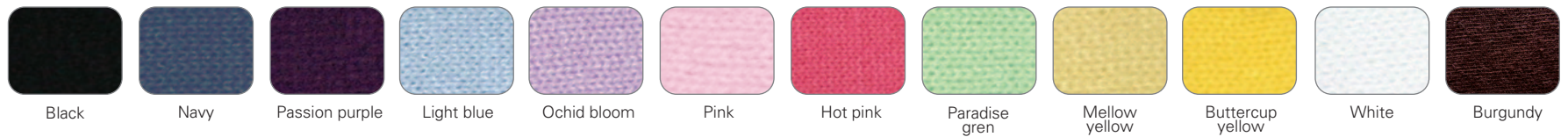
82% Nylon + 18% Spandex (Matte)



82% Nylon + 18% Spandex (Shiny)



57% Cotton, 29% Acrylic, 11% Nylon, 3% Spandex



Sansha[®] SIGNATURE



Paris • London • New York • Moscow • Budapest • Prague • Melbourne • Bucarest

WWW.SANSHA.COM